



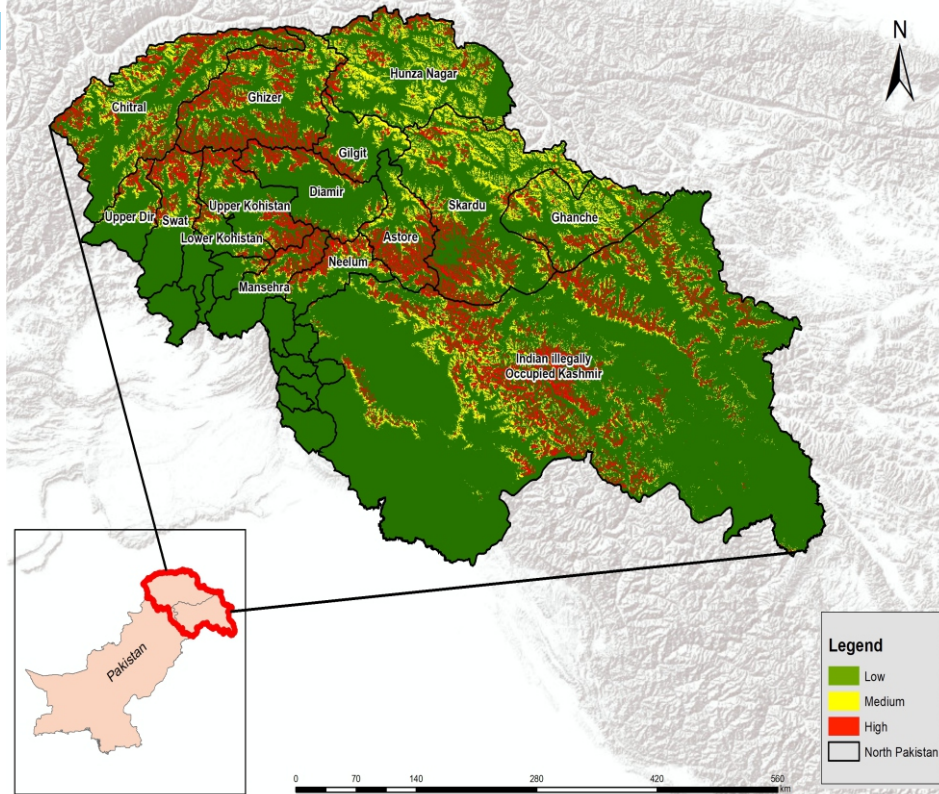
AVALANCHE ADVISORY

December, 2024 to April, 2025

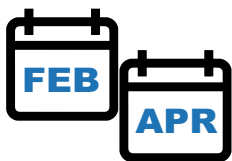


FORECAST

- As per NEOC seasonal projections, rain and snow are expected in the upper regions of Khyber Pukhtunkhwa, Gilgit Baltistan, and Azad Jammu & Kashmir in December, January, February and March. Cold weather conditions are anticipated, with snow occurring over the higher altitudes. However the temperature deviation is expected higher than normal.
- High snow accumulation with above normal temperatures may lead to higher number of avalanches in risk areas.
- As heavy to moderate snowfall may persist for some days, localized avalanches are expected to occur in very high to moderate risk zones.



BE PREPARED FOR AVALANCHE



Peak season is February through April



That last Several Days

LIKELY IMPACTS OF AVALANCHE



Road Closures



Destroy Vegetation



Structural Damage



Human casualties

LIKELY EXPOSED AREAS

KHYBER PAKHTUNKHWA
GILGIT BALTISTAN

Upper Kohistan
Lower Kohistan

Swat
Upper Dir

Batagram
Mansehra

Chitral

AZAD JAMMU & KASHMIR

Neelum

Hunza Nagar
Skardu

Astore
Gilgit

Diamir
Ghizer

Ghanche

IMMEDIATE ACTION

- It is advised to be watchful of weather forecasts and snow conditions regularly.
- Evacuate people from high-risk zones before an avalanche occurs.
- PDMA's, Rescue Services, Armed Forces and leading NGOs / CSOs to ensure availability of personnel / equipment in the indicated areas and be on stand-by for rapid response in case of any forecasted adverse weather systems.
- Stay updated on weather conditions through social media and local news.

