



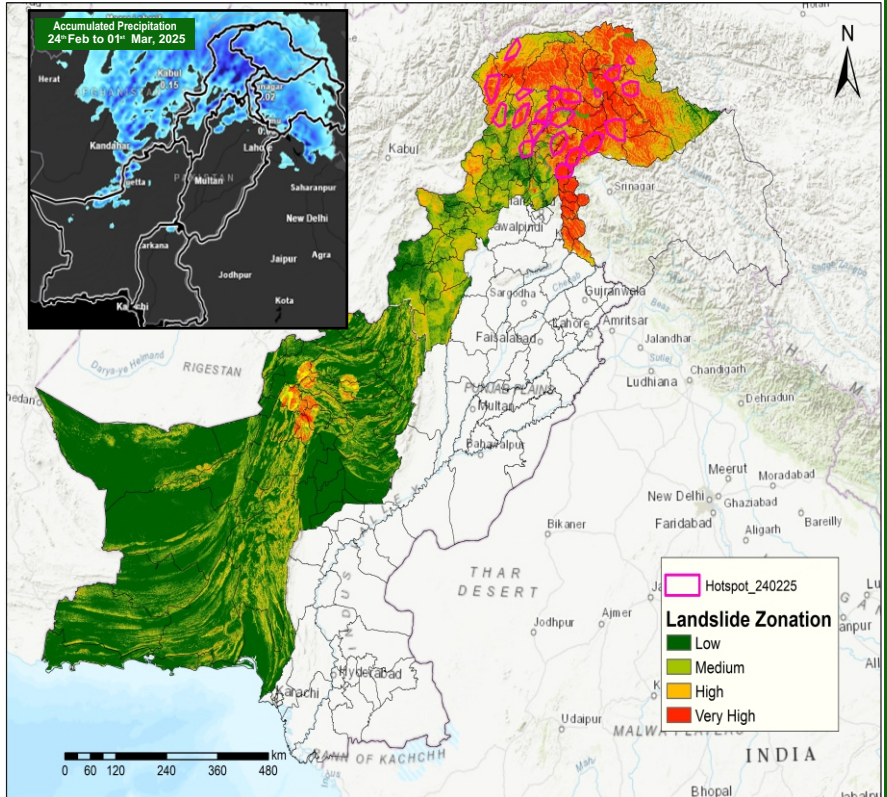
# LANDSLIDE ADVISORY



24<sup>th</sup> Feb to 01<sup>st</sup> Mar, 2025

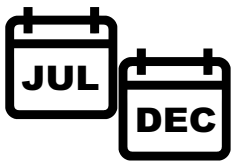
## FORECAST

- Reference to National Disaster Management Authority Weather Alert dated 24<sup>th</sup> Feb, 2025, A westerly wave is expected to bring rain, wind, thunderstorms, and hailstorms, with snowfall (low to heavy) in parts of KP, GB, AJ&K, north/western Balochistan, and upper/central Punjab from Monday to Friday.
- As heavy to moderate rain may persist for few days, localized landslides may occur in very high to moderate risk zones .
- Lower Kohistan from RD 180-210, at Upper Kohistan from RD 220-230, at Tangir from RD 260-270, and Gilgit at RD 400-420 is at high risk of landslide.



LANDSLIDE VULNERABLE ZONES

## BE PREPARED FOR LANDSLIDE



Peak season is July through December



That last a Few Hours or Several Days

## LIKELY IMPACTS OF LANDSLIDE



Road Closures



Isolation of Communities



Structural Damage



Health and Safety Risks

## LIKELY EXPOSED AREAS

KHYBER PAKHTUNKHWA	Mingora	Swat	Shangla	Abottabad	GILGIT BALTISTAN	Hunza	Skardu	Ghanche
	Battagram	Mansehra	Haripur	Kohistan		Gilgit	Nagar	Diamir
AZAD JAMMU & KASHMIR	Muzaffarabad	BALUCHISTAN	Sherani	Zhob	Musakhel	Killah Saifullah		
Haveli	Bhattian		Pishin	Ziarat	Kalat	Quetta	Mastung	

## IMMEDIATE ACTION

- It is advised to be watchful of Landslides, Slope failures, Rock falls and Ground Subsidence in high vulnerable zones (encircled) in map, avoid unnecessary travel.
- PDMA, Rescue Services, Armed Forces and leading NGOs / CSOs to ensure availability of personnel / equipment in the indicated areas and be on stand-by for rapid response in case of any forecasted adverse weather systems.
- Stay updated on weather & roads condition through social media and local news.

