



GLACIAL LAKE OUTBURST FLOOD (GLOF)



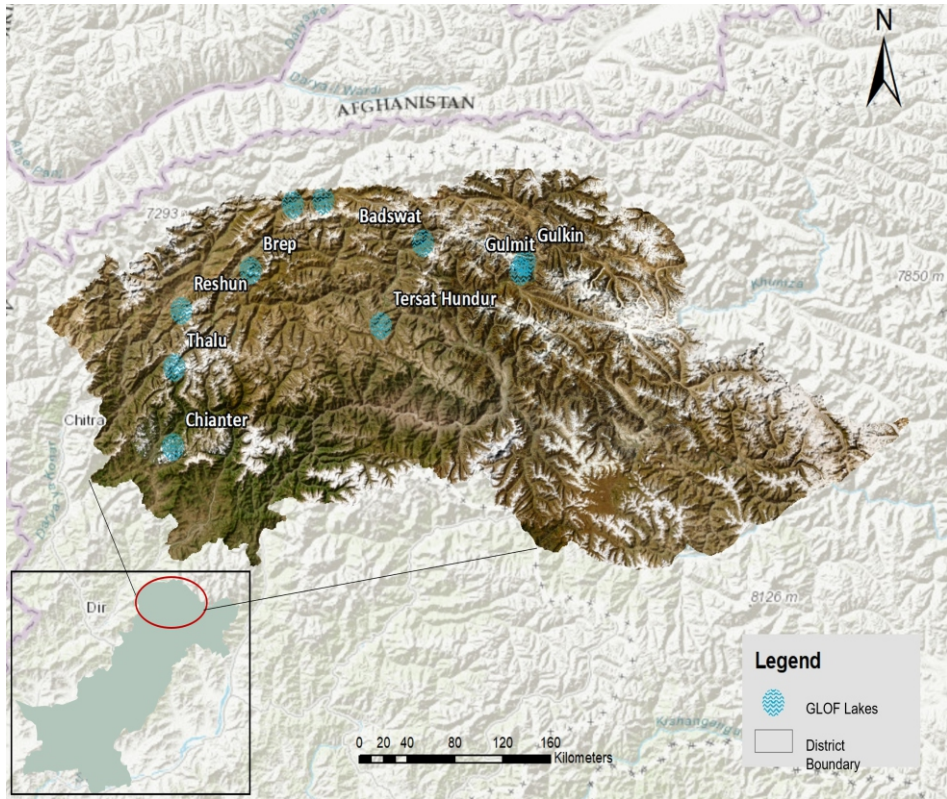
Advisory: March to September, 2025

PROJECTION

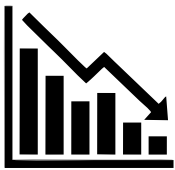
As per NEOC seasonal projections, an increase in temperatures with changing weather patterns, and early heatwaves is expected during March-June 2025, resulting in growing concern for the snow/glacier melt and GLOFs from March-September 2025.

Glacial Lake Outburst Floods (GLOFs) can pose significant threats to communities, infrastructure, and ecosystems in mountainous regions of Gilgit Baltistan, and Upper KP.

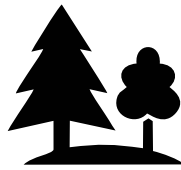
Proactive measures during these months are critical to mitigate the increased risk of GLOFs due to weather conditions and rising temperatures.



LIKELY IMPACTS OF GLOF



Economic Losses



Destroy Vegetation



Structural Damage



Human casualties

LIKELY EXPOSED AREAS

GILGIT BALTISTAN

Ahmad Abad, Faiz Abad, Mujawer Village, Ishkommen Valley, Chamangul Village, Gulkin Valley, Gulmit Valley, Bubur Village

KHYBER PAKHTUNKHWA

Reshun, Kumrat Valley, Yarkhun Valley, Lasht, istach, Dizq, Brep

LEAD RESPONDER

- DDMA, Rescue 1122 KP and GB.
- PDMA KP, GBDMA.
- NDMA, Federal Organizations including Military, Key Ministries, PMD, WAPDA, UN Organizations, Lead Area NGOs (AKDN, UNDP).

IMMEDIATE ACTION

- It is advised to regularly monitor weather forecasts and glacial lake conditions.
- Evacuate communities from high-risk zones before a Glacial Lake Outburst Flood (GLOF) occurs.
- Stay updated on weather conditions through social media and local news.