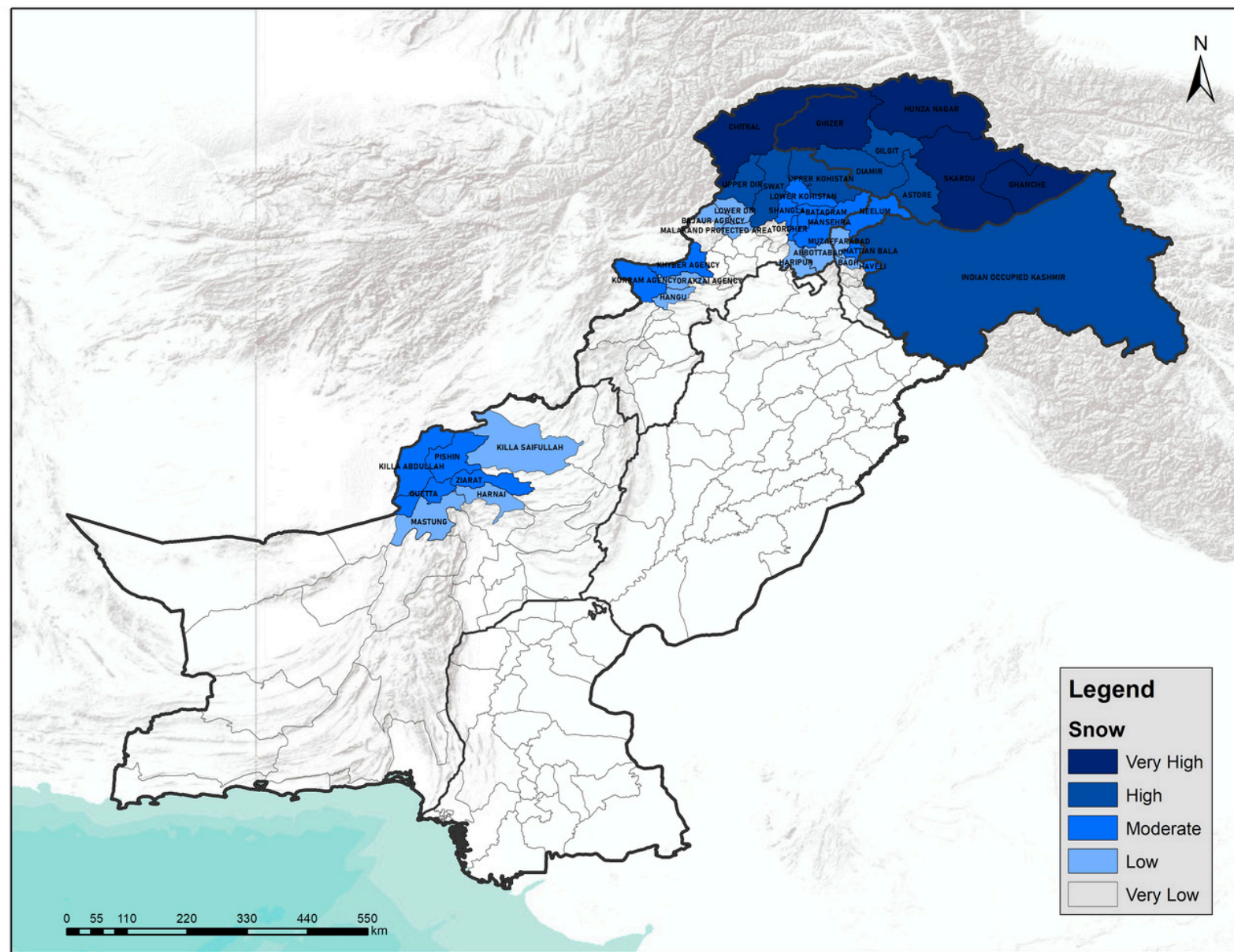




SNOWFALL SEASONAL PROJECTION (Nov 2024 - Feb 2025)



NATIONAL EMERGENCY OPERATION CENTER - NATIONAL DISASTER MANAGEMENT AUTHORITY



- The La Niña is expected to prevail from Nov 2024-Feb 2025, which typically brings below-average precipitation to the region, whereas the Indian Ocean Dipole is anticipated to make a transition to near normal during the period.
- The temperature is anticipated to drop during the season. Therefore, snowfall is expected in Upper Khyber Pakhtunkhwa, Gilgit-Baltistan, Kashmir, Northern areas of Punjab, and certain areas of Balochistan.

Impacts

- Reduced visibility and slippery road conditions are expected during and after snowfall.
- Travel disruptions, road closures, and snow avalanches are also anticipated.
- Power outages may occur from the weight of snow on power lines.
- Health risks, such as respiratory illnesses, cardiovascular issues, and hypothermia, are likely in severe weather conditions.
- Emergency services may experience higher demand and response delays.
- Supply chain interruptions may limit access to essentials like food and medical supplies.

Precautionary Measures

- Avoid unnecessary travel during the snowfall period.
- Stay updated on weather and road conditions through official channels of authorities.
- Use caution while driving, and equip your vehicle with snow chains if necessary.
- Dress warmly in layers and cover exposed skin to protect against the cold.
- Eat healthy food and stay hydrated to maintain a healthy diet to support your immune system.