

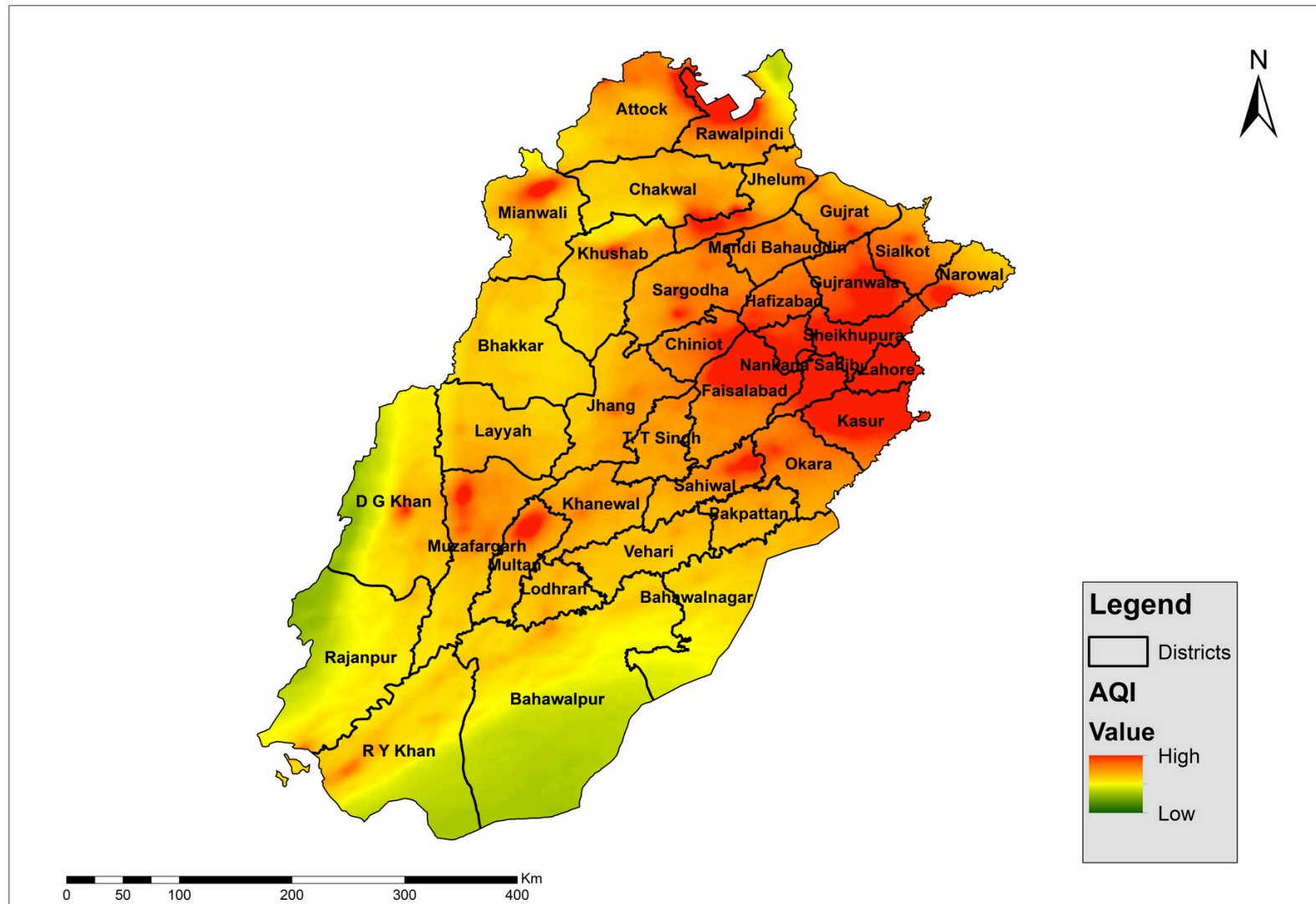


Punjab Smog Advisory 7th -15th November, 2024



NATIONAL EMERGENCY OPERATION CENTER - NATIONAL DISASTER MANAGEMENT AUTHORITY

In November, stable weather conditions are anticipated characterized by limited wind movement, increased humidity, and lower temperatures, which can lead to the formation of dense smog.



Moderate to High Smog Vulnerability:

Dense smog is likely to prevail in eastern and central Punjab including following cities:
Lahore, Gujranwala, Sheikhupura, Kasur, Hafizabad, Faisalabad, and surrounding areas.

Low to Moderate Smog Vulnerability:

Low to moderate Smog is anticipated to prevail in southern Punjab including **Multan** and surrounding areas..

Impacts of Smog

1. Health Risks: Smog increases respiratory and cardiovascular diseases, burdening healthcare. Vulnerable populations, including children, the elderly, and people with preexisting health conditions, are at heightened risk.
2. Crop Damage: Pollutants harm crops, threatening food security and farmer livelihoods.
3. Traffic Hazards: Low visibility raises road accident risks and disrupts travel.

Precautionary Measures

- Wear Masks: Use N95 or similar masks to reduce inhalation of harmful particles when outdoors.
- Limit Outdoor Activities: Avoid outdoor exercise or prolonged exposure, especially during peak smog hours.
- Use Air Purifiers Indoors: Improve indoor air quality by using air purifiers.
- Stay Informed: Monitor local air quality reports and follow advisories on high-smog days.