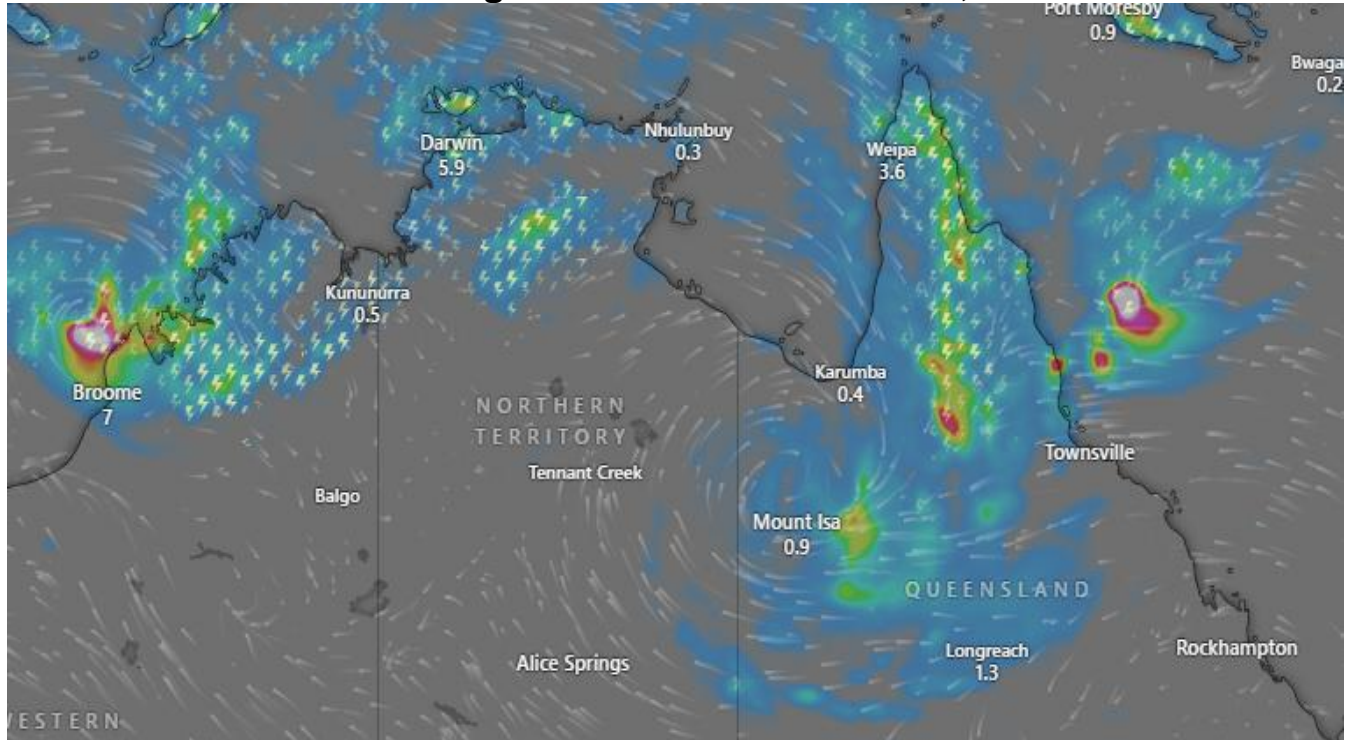




## Extreme Rainfall & Flooding Risk – North Queensland, Australia



Valid: Next 24–72 hours (from December 30, 2025)

### Affected Areas

North Tropical Coast (Cairns–Townsville), Gulf Country, including Cloncurry and Mount Isa, and adjacent inland catchments.

### Hazard Types

Extreme Rainfall, Flash Flooding, Major River Flooding.

### Hazard Summary

A persistent monsoonal low will continue to produce intense rainfall over already saturated catchments for next 24 to 72 hours. Additional very heavy falls are likely, increasing the risk of life-threatening flash flooding and major river rises, particularly in low-lying and inland areas. Flood impacts may escalate rapidly during this period.