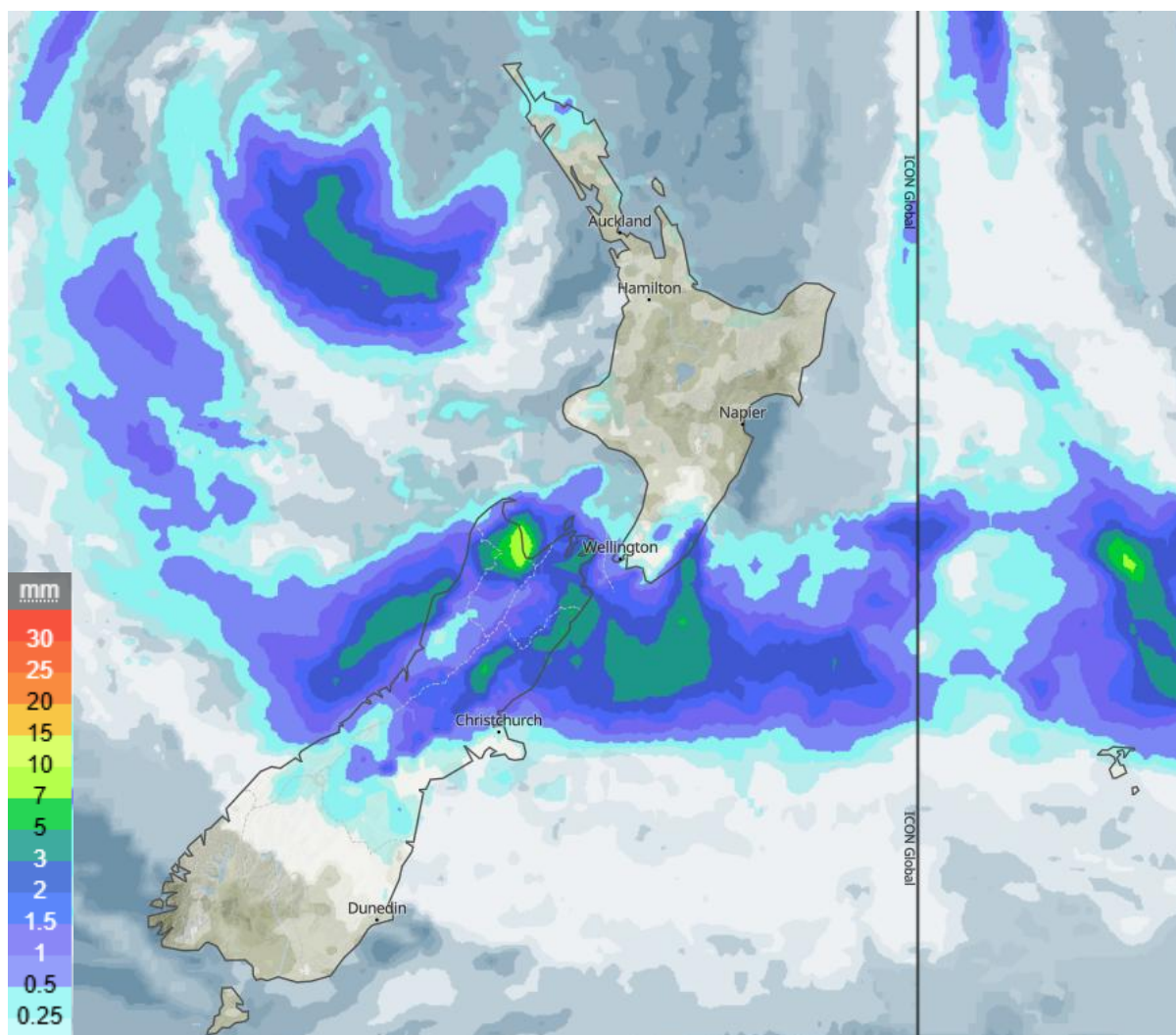




Heavy Rains - New Zealand



Affected Areas

Auckland, Wellington, Christchurch, Amberley, Darfield, West Melton, Hanmer Springs, Fairlie.

Duration

December 30-31, 2025

Hazard Types

Heavy Rainfall/ Thunderstorms

Hazard Summary

Rainfall of up to 15 mm in a few hours may cause localized surface water and ponding, especially in urban or low-lying areas. Impacts are expected to be minor, though brief disruptions are possible during heavier bursts.