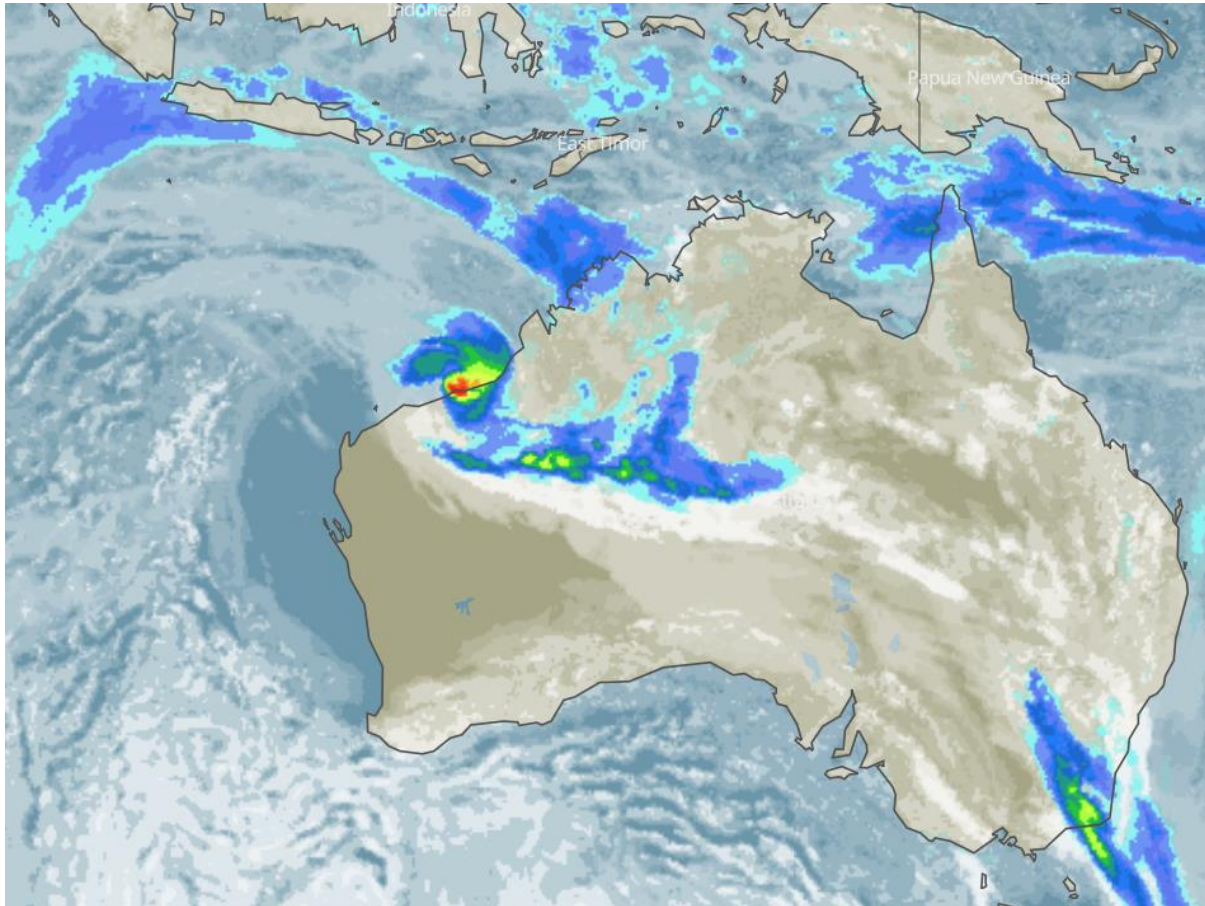




February 14, 2025

Global Alerts - East Zone

Tropical Cyclone- Australia



Affected Areas

Port Hedland, Marble Bar, De Grey, Munjina, Nullagine, Pardoo, Wallal, Whim Creek, Yarrie, Kimberley, and Pilbara

Duration

February 14, 2025

Hazard Types

Severe Tropical Cyclone Zelia

Hazard Summary

Severe Tropical Cyclone Zelia made landfall at 12:30 PM near De Grey River mouth, northeast of Port Hedland. While Port Hedland is expected to avoid the most destructive core, hazardous conditions remain in the region.