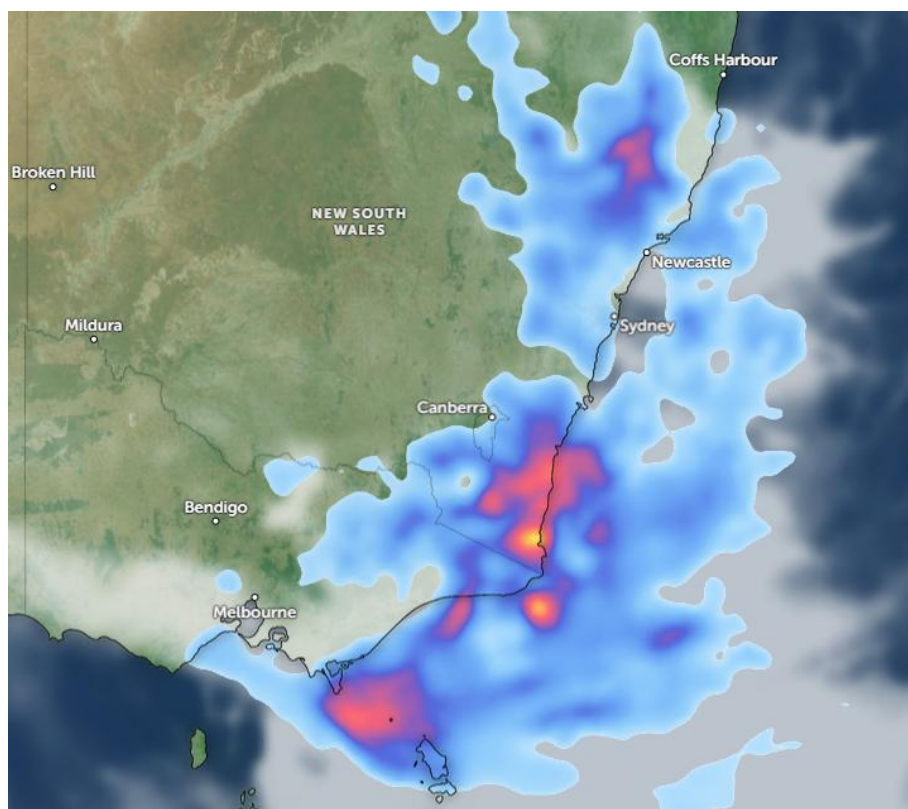




Heavy rainfall and flooding- South Eastern Australia



Potentially Affected Areas

Coastal and eastern New South Wales (Sydney, Newcastle, Coffs Harbour), the ACT including Canberra, and eastern Victoria, particularly Gippsland and coastal areas east of Melbourne.

Hazard Types

Heavy rainfall and flash flooding

Hazard duration

15/01/2026 to 19/01/2026

Hazard Summary

Heavy rainfall is occurring across south-eastern Australia due to strong onshore moisture flow from the Tasman Sea interacting with a coastal trough, leading to persistent rain bands and embedded thunderstorms. Localised intense downpours are increasing the risk of flash flooding, rapid river rises, urban waterlogging, and landslides, particularly in low-lying and coastal catchments.