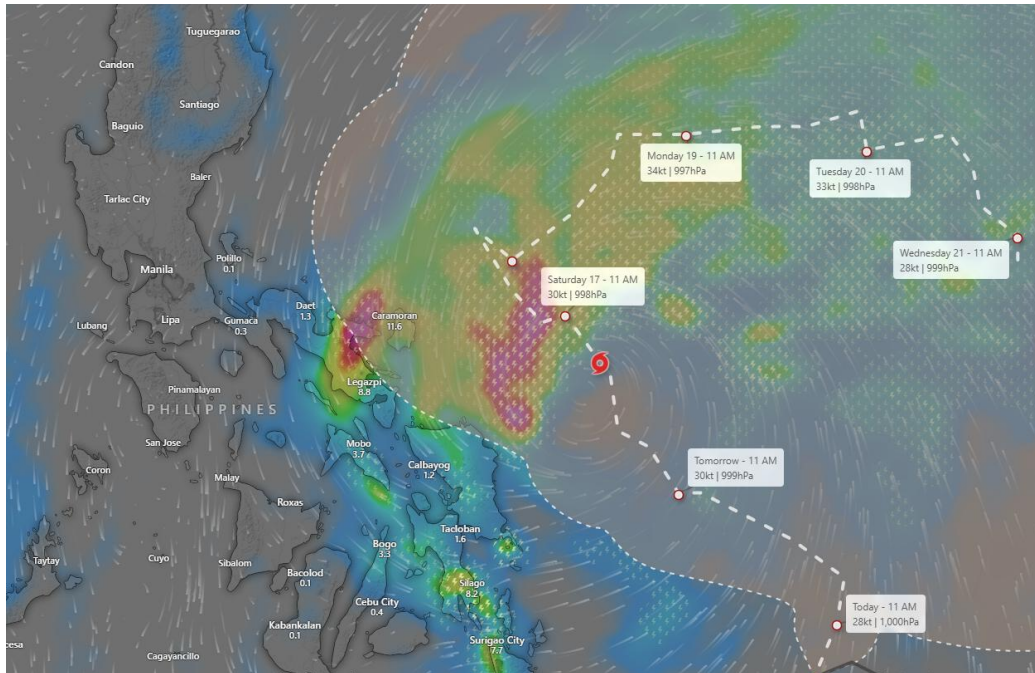




Tropical depression Nokaen and heavy rainfall - Philippines



Potentially Affected Areas

Eastern Philippines (Bicol Region, Catanduanes, Albay, Camarines Sur), Eastern Visayas, nearby offshore areas of the Philippine Sea.

Hazard Types

Tropical depression with heavy rainfall and thunderstorms

Hazard duration

16/01/2026 to 19/01/2026

Hazard Summary

A developing tropical depression over the Philippine Sea is generating organized rainbands and strengthening onshore winds as it approaches the eastern Philippines. The system is producing prolonged heavy rainfall, gusty winds, and rough sea conditions, which significantly increase the risk of flash flooding, river overflow, and landslides, especially in mountainous and coastal regions. The slow movement and broad moisture envelope make rainfall the primary hazard, with potential impacts to coastal activities, marine transport, and low-lying communities until the system weakens or moves away.