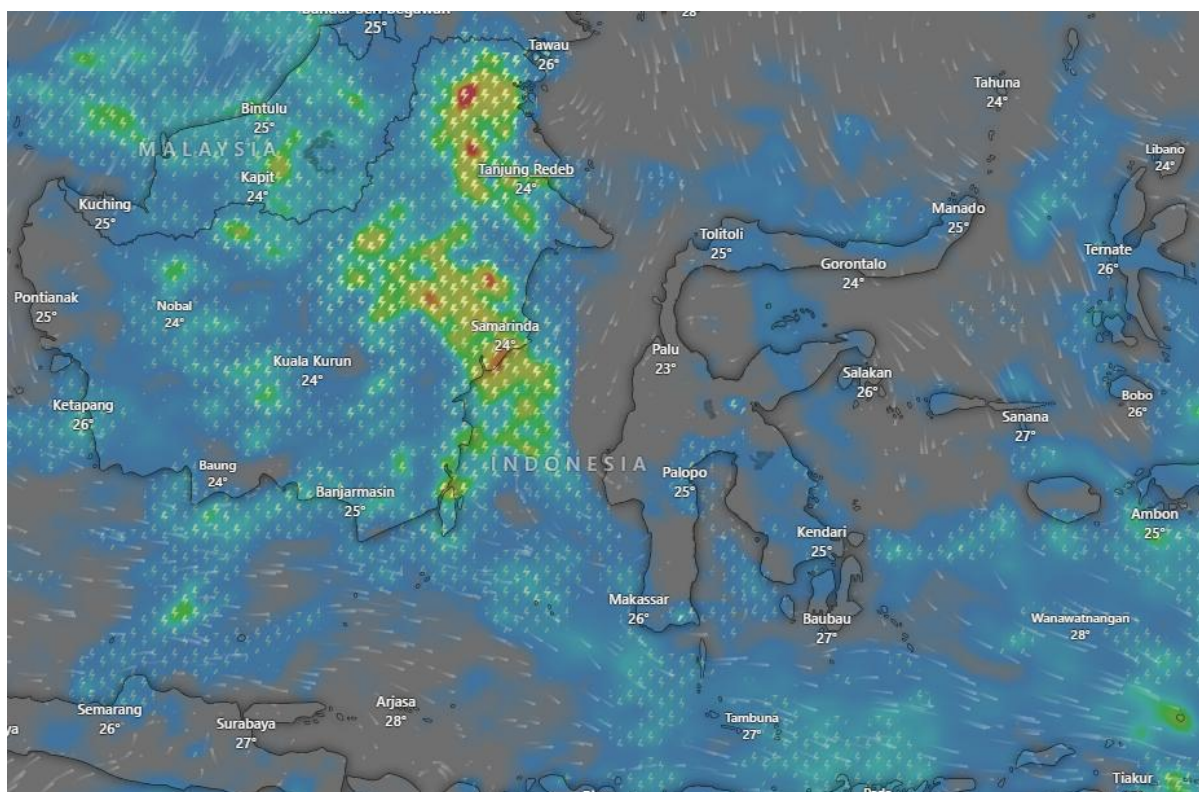




Heavy Rains – Indonesia



Potentially Affected Areas

East Kalimantan: Samarinda, Tanjung Redeb, surrounding interior districts

South Kalimantan: Banjarmasin and nearby river basins

Central Kalimantan: Kuala Kurun and adjacent inland areas

South Sulawesi: Makassar, Palopo

Central Sulawesi: Palu and nearby areas

Hazard Types

Heavy rains

Hazard Summary

A widespread convective rainfall and thunderstorm system is affecting Borneo (Kalimantan and Sarawak) and parts of central–southern Indonesia, characterized by moderate to locally heavy rain, lightning activity, and gusty winds. A heightened risk



**Government of Pakistan
National Disaster Management Authority
Prime Minister's Office Islamabad**



of flash flooding is imminent along with river overflow, urban waterlogging, and localized landslides, particularly in low-lying floodplains and forested/hilly interiors. Persistent rainfall may also disrupt transport and increase marine hazards in adjacent seas due to reduced visibility.