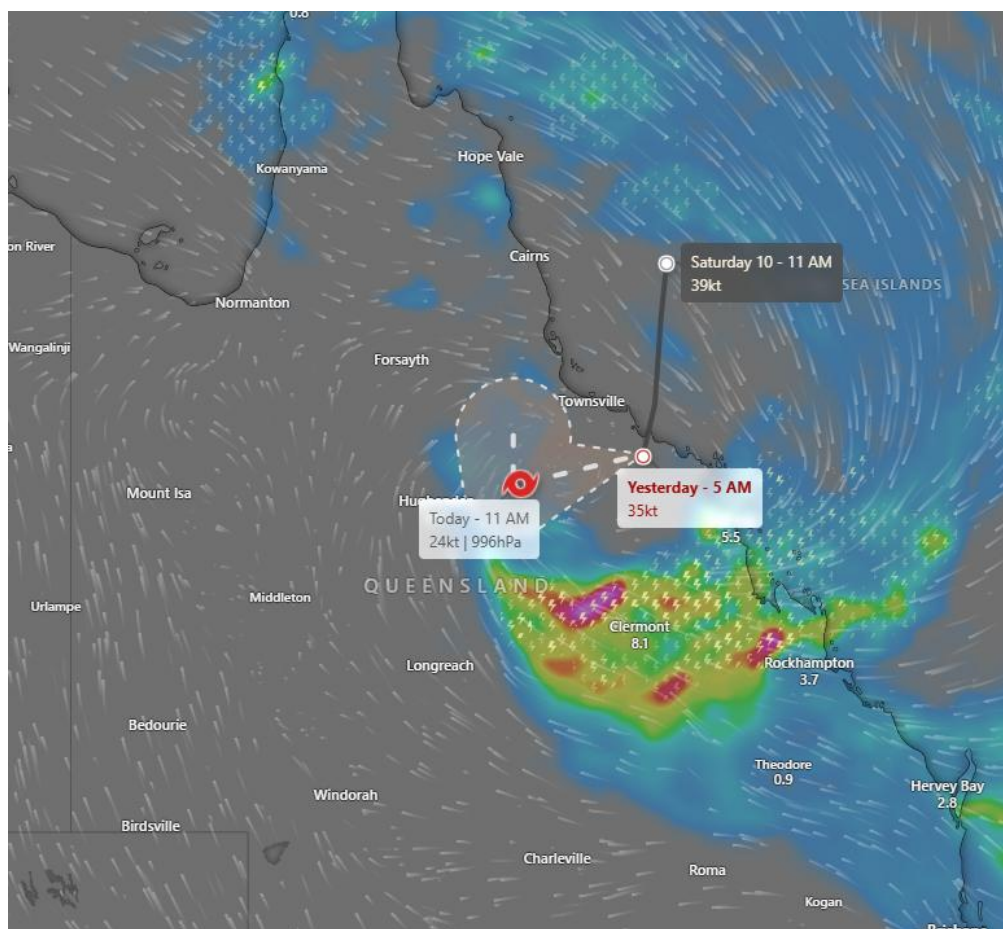




Developing Tropical Depression with Heavy Rainfall- Queensland Australia



Potentially Affected Areas

Central and eastern Queensland, particularly inland districts around Hughenden–Clermont and coastal areas from Mackay to Rockhampton, with offshore impacts in the central Coral Sea.

Hazard Types

Heavy rainfall and cyclone development

Hazard Summary

A tropical depression is forming over central eastern Queensland that might develop into a cyclone, producing widespread heavy rainfall, thunderstorms, and strengthening winds. The most immediate hazards are flash flooding, river rises, and local inundation, particularly across inland catchments and central coastal river systems.



**Government of Pakistan
National Disaster Management Authority
Prime Minister's Office Islamabad**



Gusty winds, squally weather, and hazardous marine conditions are likely near the coast and offshore. The system poses a significant flood risk due to slow movement and persistent rain bands.