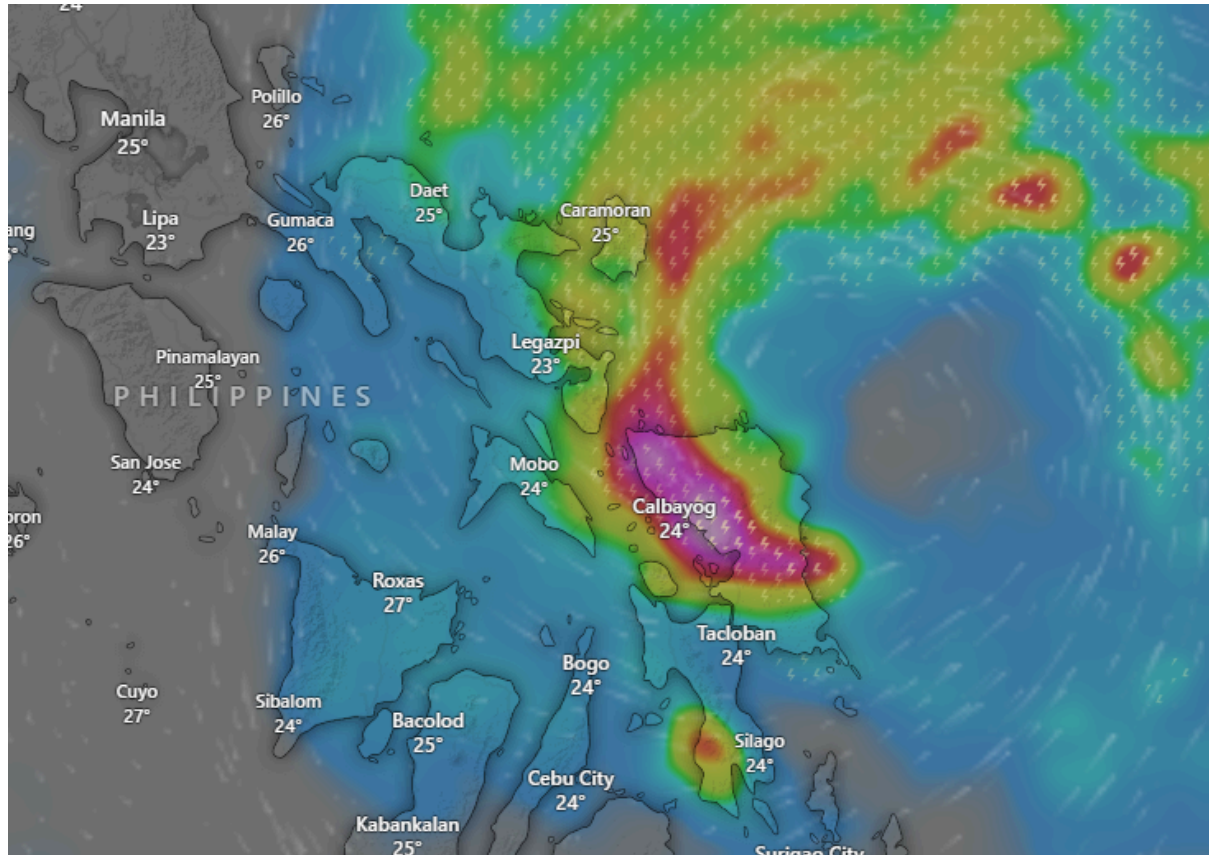




## Heavy Rainfall in Philippines



### Potentially Affected Areas

Bicol Region (Camarines Sur, Albay/Legazpi), Eastern Visayas (Samar Calbayog, Leyte Tacloban), parts of Cebu and nearby central Philippine islands.

### Hazard Types

Heavy rainfall and cyclone development

### Hazard Summary

A tropical cyclone is impacting the central and eastern Philippines, bringing intense rainfall and strong winds. The highest hazard is concentrated where rainfall bands (red to purple areas) are passing over land, significantly increasing the risk of flash floods, river overflow, and landslides, particularly in low-lying and mountainous regions. Coastal and marine conditions are hazardous due to strong winds and high waves, posing risks to fishing and sea transport. Disruptions to transport, power, and daily activities are likely in the most affected areas.