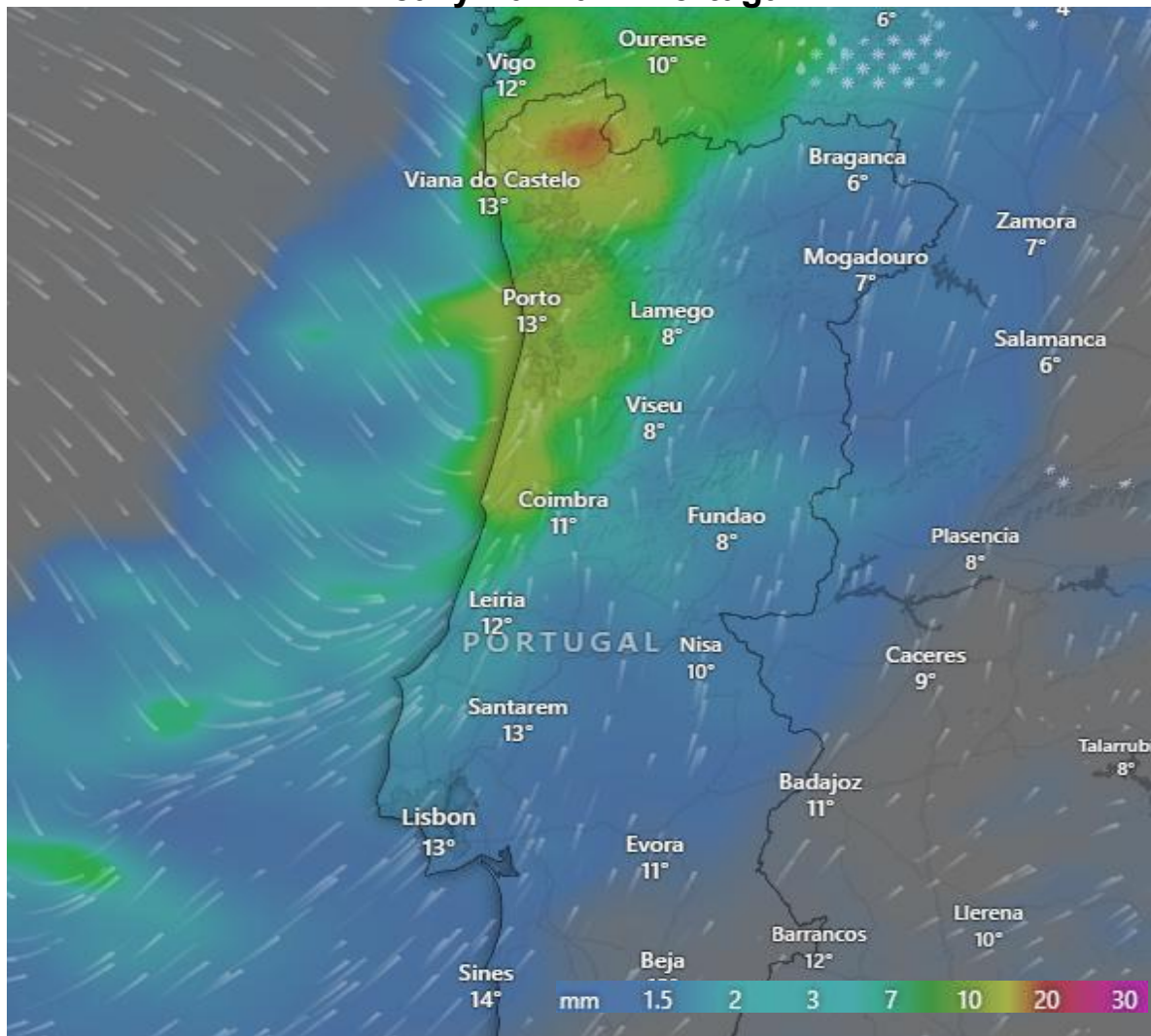




Jan 14, 2026

Heavy Rainfall - Portugal



Affected Areas

Porto, Braga, Esmoriz, Esposende, Viana do Castelo, Povia de Varzim.

Duration

January 14-17, 2026

Hazard Types

Heavy Rain, Coastal Flooding, Damaging Winds, Storm Surge, Landslides

Hazard Summary

A wind convergence phenomenon is occurring near the western coast of Portugal in the Atlantic Ocean. This system is currently moving eastward and is actively playing a role in cloud formation. This wind system is expected to trigger heavy rainfall and stormy conditions in the North-Western Part of Portugal. Secure homes against water ingress, limit travel during peak storms, and be cautious of landslides in hilly or coastal areas.