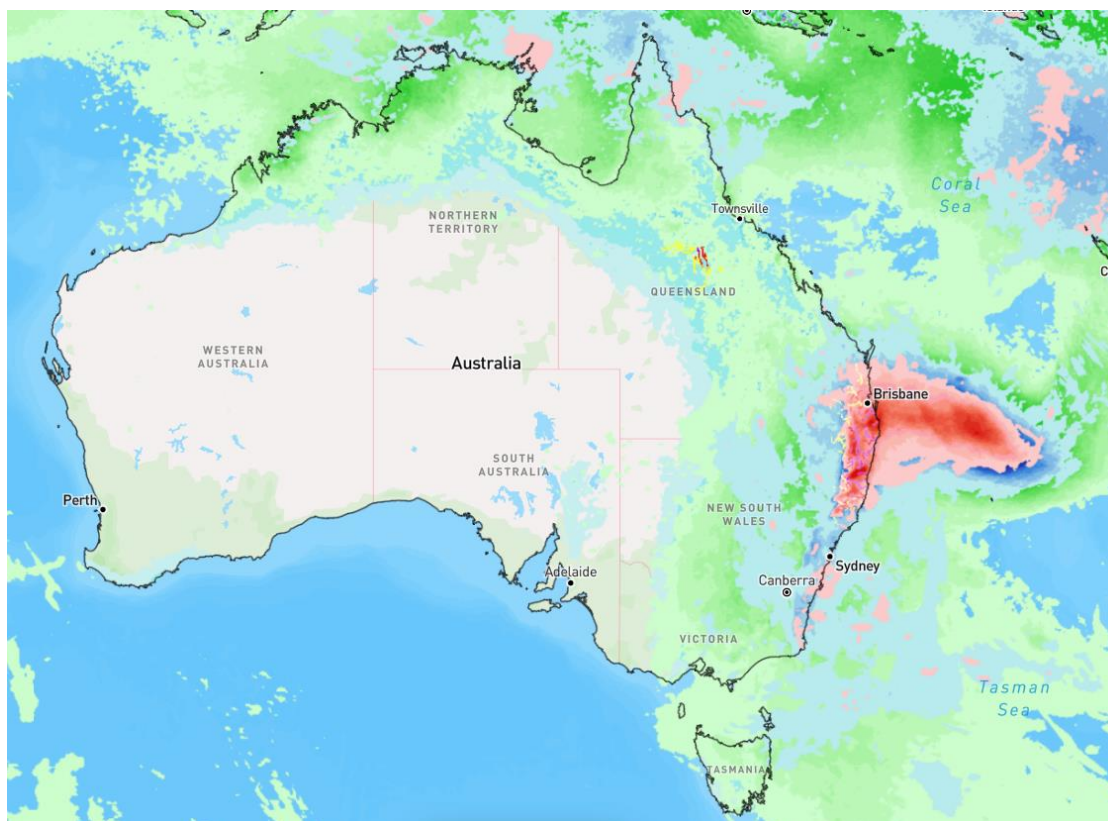




March 04, 2025

Global Alerts - East Zone

Tropical Cyclone - Australia



Affected Areas

Byron Bay, Lismore, Tweed Heads, Gympie, Hervey Bay, Beaudesert, Brisbane, Caloundra, Chermside, Coolangatta, Gold Coast Seaway, Ipswich, Maleny, Logan Central, Manly, Maroochydore, Mount Gravatt, Nambour, Nerang, Noosa Heads, Robina, Surfers Paradise, Northern Rivers, and Burnett, Southeast Coast

Duration

March 4, 2025

Hazard Types

Tropical Cyclone Alfred

Hazard Summary

Tropical Cyclone Alfred is expected to turn towards the southeast Queensland coast today, with a potential coastal impact later this week. Residents in affected areas should monitor official updates and be prepared for severe weather conditions. Coastal communities should remain vigilant and take necessary precautions.