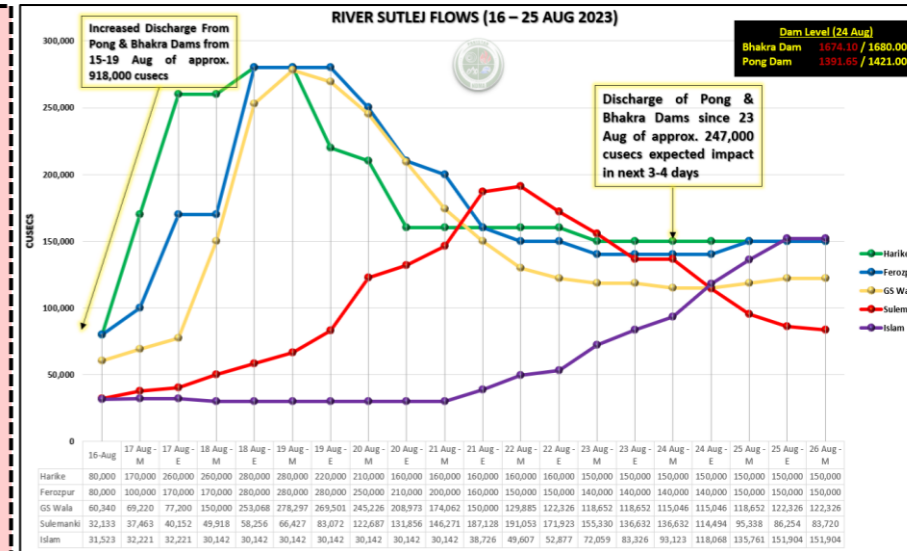


Flood River Sutlej – Evacuation Efforts

• With **issuance of timely early warning / advisory** and **pro-active engagement of all stakeholders by NDMA**, **coordinated evacuation of vulnerable / at-risk population from low-lying areas adjacent River Sutlej** has been ensured in **Districts Kasur, Okara, Bahawalnagar, Pakpattan, Vehari, Bahawalpur, Lodhran via Rescue 1122**

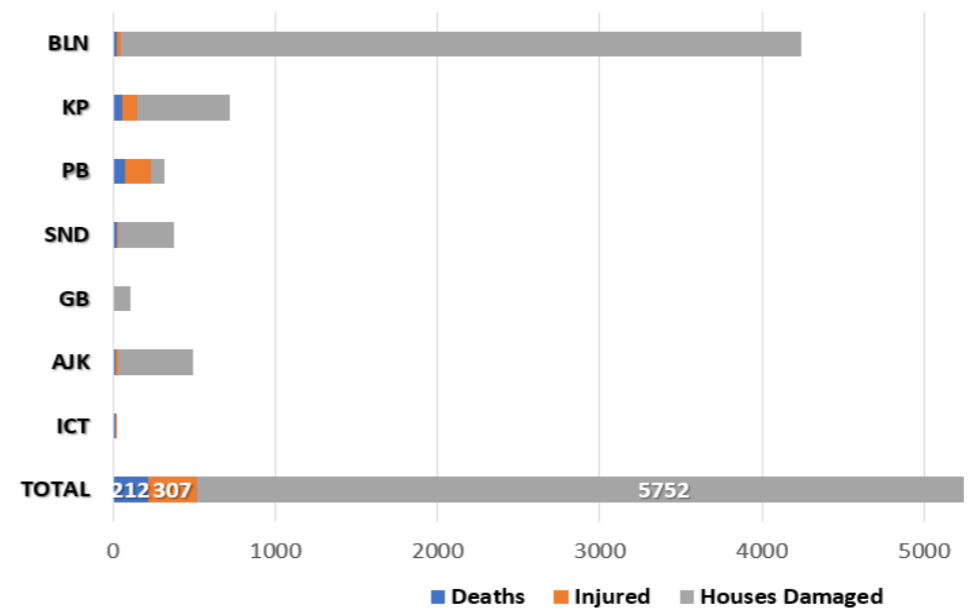
- Pers Evac / Tpt - **378,426**
- Livestock Evac - **20,319**
- **Resources Deployed**
- Boats - **372**
- Rescue Personnel - **1,408**



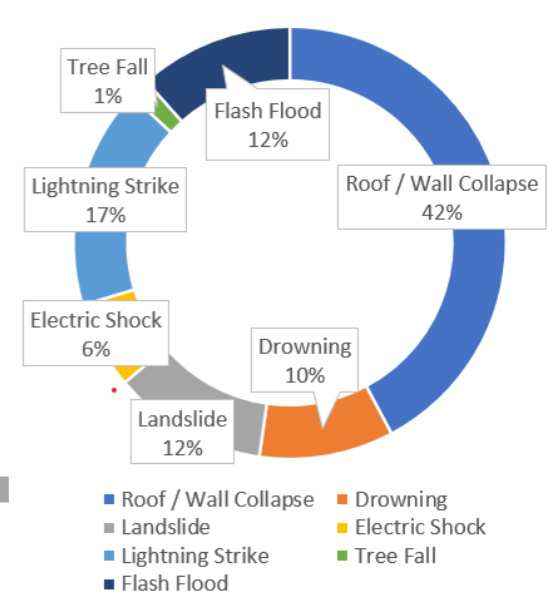
River Sutlej at GS Wala is at High Flood and on STABLE TREND
River Sutlej at Sulemanki is at Medium Flood and on FALLING TREND
River Sutlej at Islam is at High Flood and on STABLE TREND
Heavy Rain in River Sutlej Catchment, led to discharge of approx. 247,000 cusecs from Bhakra & Pong Dams since 23 Aug, likely impact in 3-4 days on GS Wala

- TOP RAINFALL RECORDED LAST 24 HOURS (MM)**
- **Balochistan.** Barkhan 2
 - **Khyber Pakhtunkhwa.** Saidu Sharif 26, Lower Dir 26, Kalam 20, Bajaur 15, Kakul 6, Malam Jabba 6, Bannu 2, Upper Dir 1
 - **Punjab.** Lahore **75**, Gujranwala 31, Sargodha 30, Nurpur Thal 25, Hafizabad 23, Narowal 21, Chaklala 4, Chakwal 1, Joharabad 1, Mangla 1, Sialkot 1, DG Khan 1
 - **Sindh.** Nil
 - **Gilgit-Baltistan.** Gupis 8, Bagrote 4, Gilgit 3, Chilas 1
 - **State of AJ&K.** Garhidupatta 6, Chatar Kalas 5, Muzaffarabad 2, Rawalakot 1, Bandi Abbaspur 1, Dhulli 1, Haraman 1
 - **ICT.** Zero-point 2

Cumulative Losses & Damages (25 June to Date)

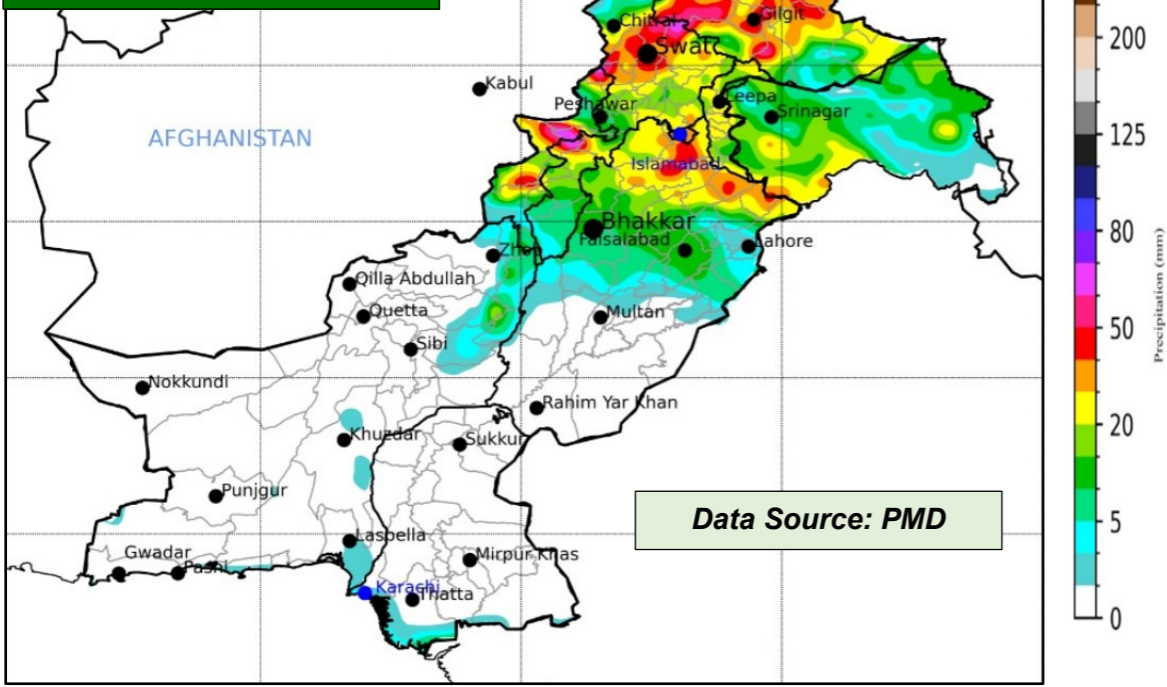


Cumulative Deaths Categorization



Note: Losses / Damages data is provided by PDMAs/ GBDMA/ SDMA/ Govt Depts and are preliminary.

**Rainfall Impact Map (mm)
(25 to 31 August 2023)**



FORECASTED IMPACT

- River Sutlej at GS Wala is at **High Flood** and is on **STABLE TREND**
- River Sutlej at Sulemanki is at **Medium Flood** and is on **FALLING TREND**
- River Sutlej at Islam is at **High Flood Level** and is on **STABLE TREND**
- **At-risk Districts include Kasur, Okara, Bahawalnagar, Pakpattan, Vehari, Bahawalpur, & Lodhran**
- **Moderate to Heavy Rainfall observed in Upper Catchment Areas of River Sutlej which has led to discharge of approx. 247,000 cusecs observed from Bhakra/Pong Dams since 23 Aug, likely impact in 3-4 days on GS Wala**
- From 23-27 Aug, **Rain-wind / thundershowers with a few moderate to heavy falls and occasional gaps** expected: -
 - **Balochistan** (Musakhel, Barkhan, Zhob, Kalat and Khuzdar)
 - **Khyber Pakhtunkhwa** (Galiyat, Chitral, Dir, Swat, Shangla, Buner, Mansehra, Kohistan, Abbottabad, Haripur, Kohat, Peshawar, Mardan, Swabi, Nowshera, Kurram, Lakki Marwat, Dera Ismail Khan, Bannu, Karak, Waziristan)
 - **Punjab** (Murree, Rawalpindi, Attock, Chakwal, Jhelum, Mandi Bahauddin, Hafizabad, Gujranwala, Gujrat, Sialkot, Narowal, Lahore, Kasur and Sheikhupura, Mianwali, Sargodha, Khushab, Faisalabad, Toba Tek Singh, Jhang and Bhakkar)
 - **Gilgit Baltistan** (Diامر, Astore, Ghizer, Skardu, Hunza, Gilgit, Ghanche and Shigar)
 - **State of AJ&K** (Neelum Valley, Muzaffarabad, Poonch, Hattian, Bagh, Haveli, Sudhnoti, Kotli, Bhimber and Mirpur)

RESERVOIR LEVELS (0600 hrs)		
Details	Tarbela	Mangla
MCL (Feet)	1,550.0	1,242.0
Dead Level (Feet)	1,402.0	1,050.0
Water Level (Feet)	1549.25	1241.70
Change Last 24hrs	+0.55	0.00
Live Storage (MAF)	Max	5.809
	Present	5.766
Change Last 24hrs	+0.032	0.000
% Dam Filled	99.25	99.67
Change Last 24hrs	+0.55	0.00
Data Source: TDP & MDP		

FFD Discharge Report			
Recorded at: 26-Aug-2023 06:00 PST			
River	Site	Inflow	Outflow
Indus	Tarbela	231,000	155,500
	Kalabagh	283,179	275,179
	Chashma	310,586	292,386
	Taunsa	241,290	218,790
	Guddu	241,541	210,360
	Sukkur	205,010	151,500
Kabul	Kotri	153,431	113,086
	Nowshera	40,800	40,800
Jhelum	Mangla	17,000	16,000
	Rasul	14,690	11,895
	Marala	68,500	38,277
	Khanki	51,872	43,560
Chenab	Q.Abad	43,571	35,571
	Trimmu	71,401	62,801
	Panjnad	80,666	64,166
	Jassar	11,826	11,826
Ravi	Shahdara	30,692	30,692
	Balloki	40,245	19,645
	Sidhnai	35,398	17,498
Sutlej	GS Wala	122,326	122,326
	Sulemanki	96,638	83,720
	Islam	151,904	151,904

GUIDANCE ISSUED

- PDMA to ensure **early warning & prompt response** in vulnerable areas in light of **wind-thundershowers with a few moderate to heavy falls** (in areas indicated above in blue).
- PDMA to undertake **regular public awareness on all media channels / social media** to maximise general public's knowledge on risks associated with monsoon season; heavy rains, urban flooding, flash flooding, landslides, etc.
- Tarbela & Mangla Dam Authorities are **advised to manage reservoirs levels**, and **use of spillways accordingly in coordination with stakeholders downstream**
- City / District Administrations are to **ensure contingency traffic plans** for areas vulnerable to flooding in urban centres, (as indicated above) catering for **prompt de-watering operations in flooded areas**.
- **PDMA Punjab to ensure timely early warning and evacuation of all at-risk populace living downstream of GS Wala, Sulemanki and Islam on River Sutlej.**
- **PDMA Punjab to ensure provision of medical care and relief items to displaced populace in camps**
- PDMA Khyber Pakhtunkhwa, PDMA Punjab & SDMA to ensure **early warning, prompt evacuation and response** in vulnerable low-lying areas downstream Tarbela & Mangla Dams in-case of any emergent water discharges or flooding situation in light of present reservoir levels.
- GBDMA to ensure all necessary measures are undertaken to mitigate / prepare against GLOF incidents.
- NHA / FWO / Local C&W Depts to **ensure pre-placement of machinery** and **timely restoration of damaged road linkages**.
- **Rescue Services, Armed Forces** and leading NGOs / CSOs to **ensure availability of personnel / equipment** in the indicated areas & **be on stand-by for rapid response**.