



*F.2 (E)/2025-NDMA (MW/ Forest Fire Advisory)*  
**Government of Pakistan**  
**Prime Minister's Office**  
**National Disaster Management Authority (HQ)**  
 Main Murree Road Near ITP Office, Islamabad



Dated: **28 January 2025**

Subject: **Forest Fire Advisory and Preparedness Measures**

Prolonged dry conditions are likely to persist during February, March, and April, further heightening the risk of forest fires in Pakistan. This extended dry spell, combined with below-average rainfall and rising temperatures, will dry out vegetation and lower soil moisture levels, creating highly combustible conditions. Low relative humidity (15-20%) and strong westerly winds (20–50 km/h) during this period will exacerbate the likelihood and intensity of fires. These climatic factors make the months leading up to the fire season particularly critical, as they set the stage for increased fire incidents, especially in **vulnerable areas** such as *Sherani, Swat, Abbottabad, Haripur, Chakwal, Harnai, Kohlu, Musakhel, Zhob, Neelum, Islamabad and Lower Dir*. Maps attached at **Annexure P**.

2. Keeping in view the possibility of the forest fires, following measures be considered for adoption before and during fire season:-

- a. **Identification of Risk Areas**. Identification of forest fire risk areas based on frequency and extent (areas affected) of forest fires occurrence in the past.
- b. **Categorization**. Each province / territory may categorize high, medium and low risk forest fire areas based on frequency and intensity of forest fires in the past, topographic features, meteorological factors, tree density, quantity of ground cover, accessibility to the areas, availability of water source, etc.
- c. **Monitoring**. High Risk areas may be monitored on daily basis, whereas, medium and low risk areas may have routine monitoring.
- d. **Vigilance Team**. Notify and depute vigilance teams of forest department staff for monitoring and early response to prevent and control high, medium and low risk forest fires during fire season.
- e. **Use of Latest Technologies (where available)**. Use of latest technologies such as GIS, remote sensing, satellite imageries and drones may be encouraged in high-risk forest fire areas for risk assessment, monitoring and firefighting.
- f. **Controlled Burning**. Prescribed controlled burning in High-Risk areas to Pre-emption controlled fire intensity.
- g. **Water Pond**. Create water ponds and preplacement of water pumps, solar plates and firefighting in high-risk forest fire areas.
- h. **Clearance**. Removal of flammable material from forest sensitive areas (Pine needles, etc).

- i. **Fire Lines**. Create fire lines in forest areas (forest roads/paths, permanent Nallahs, etc).
  - j. **Fire Ditches**. Create fire ditches at appropriate intervals to stop the fire to the lower area from the falling of burning wood and stones.
  - k. **Involvement of Local Communities**. Involve local communities in the forest prevention and control.
  - l. **Clearance of Fire Lines**. Clearance of flammable material from forest sensitive areas (dry leaves, dead woods, Pine needles, etc).
  - m. **Planned Grazing**. Local communities must be educated on planned and control grazing of forest areas to reduce flammable material.
  - n. **Establishment Watch Towers**. For early Detection of fire incidences. Possibility maybe explored for unmanned watch towers fitted with surveillance cameras
  - o. **Activation of Emergency Operation Center / Control Rooms**. Establish control room with arrangements necessary communication with deployment of staff.
  - p. **Engagement and Deployment of Human Rescues**. Engagement of *Negahbans* / Watchers for fire season.
  - q. **Firefighting Equipment**. Ensure availability of firefighting equipment before the start of fire season (communication network/ wireless system, fire beaters, gears, extinguishers, skid pumps, water bowsers, buckets, etc).
  - r. **Prepositioning and Stocking**. Purchase, stock and prepositioning of fire-retardant chemicals, equipment and machinery for fire-fighting
  - s. **Buffer Zone**. Create buffer zone between the construction line and forest.
  - t. **Prohibit Dumping**. Prohibit dumping of garbage near forest areas.
  - u. **Field Visits**. All forest officers to ensure frequent field visits and availability during fire season.
3. **NB: All provinces/ territories to include aforementioned measures for low, medium and high-risk forest fire areas appropriately.**
4. **Immediate Response Measures on Outbreak of Fire**. The immediate measures to be considered for adoption on outbreak of medium and lower risk forest fire to be as under:-
- a. In case of medium intensity fire risk areas, Rescue 1122 will assist the forest/wildlife staff and the local communities in controlling the forest fire, whereas, in low intensity fire risk area, wildlife staff and local communities may be asked called for fire control. Rescue1122 may be called, if required.
  - b. Mostly it is practically not possible to reach the spot of forest fire due to difficult terrain. Hence arrangements for transportation of equipment and manpower to nearest location to be worked out beforehand.
  - c. Mobilize local community for assistance.

- d. Prepare for counter fire if needed.
- e. Surveillances visit of area after extinguishing forest fire.
- f. Ensure coordination with local administration.

5. **Measure to be taken Post Fire (High intensity Forest Fires).** The measures to be considered for adoption on outbreak of high intensity forest fire are as under: -

- a. Rescue 1122, Provincial Disaster Management Authority, Army, Air Force, Paramilitary Forces, Civil Defense, Wildlife Staff other concerned institutions/agencies may be called to assist the Forest staff in high intensity risk areas.
- b. Alert NDMA, PDMA, Aviation Division/ Army, Air Force for provision of ariel assets to drop water, fire-retardant chemicals and materials for controlling fire on need basis.
- c. Make arrangements for counter fire.
- d. Arrange equipment to remove flammable material on emergent basis, create fire lines on short notice, make earthen bunds, divert water from nearby water ponds, etc.
- e. Plan for evacuation of inhabitants likely to get affected by forest fire.
- f. Initiate relief operation for displaced inhabitants.
- g. Provision of special aircraft to drop water and other fire-retardant chemicals, if required.
- h. Explore possibility of artificial rain/spray of chemicals.

6. **Actionable Plan to be Implemented by Local Administration.** The measures to be taken by local administration for adoption with regards to forest fire areas under:-

- a. Impose restrictions under Section 144 in high-risk forest fire areas on carrying fire arms, flammable material, etc.
- b. Provision of communication arrangements for high-risk forest fire areas especially during fire season.
- c. Purchase and stock fire retardant chemicals, equipment and machinery for firefighting.
- d. Improve capacity of Forest Department of provinces/territories, Islamabad Capital Territory and fire Fighting units of 1122, where available, through provision of additional equipment.
- e. Engagement of local community in firefighting activity.
- f. Provision of transport facility for carrying human resource and firefighting equipment to areas where forest fire occurs.
- g. Execute evacuation plan of inhabitants likely to get affected by forest fire.
- h. Ensure availability of staff of Civil Defense on need basis.
- i. Initiate relief operation for inhabitants displaced due to forest fire.
- j. Awareness raising through press and electronic media.

7. **Preparing for Forest Fires:-**

- a. Stay alert, when temperatures are high and there's been little rainfall for an extended period, the risk of wildfires increases.
- b. Be careful, human activities, whether intentional or accidental, often spark wildfires. Many people are unaware of the risks these fires pose, especially in areas prone to wildfires.
- c. Keep informed, stay updated on wildfire reports in your area through the media or your local emergency services.
- d. Get your emergency kits ready, find out which essential items to include and take immediate action to prepare.
- e. Create an escape plan for your safety.
- f. Develop a household emergency plan, account for the specific needs of everyone in your household, including elderly individuals, those with health conditions, children, pets, and service animals.
- g. Eliminate potential fire hazards around your home, such as dry branches, leaves, and debris.

h. **What to do if a Wildfire breaks out:-**

- (1) If you see a wildfire and are outside:-
  - (a) Stay calm.
  - (b) Make sure you are in a safe area, away from vegetation and smoke.
  - (c) If you're in your vehicle, keep all windows and vents closed.
  - (d) Dial 1122 right away. Provide the fire control team with details such as your location, the size of the fire, and any other relevant information, including the address.
- (2) If you are at home:-
  - (a) Stay calm.
  - (b) Move to a safe location and do not attempt to extinguish the fire on your own.
  - (c) Keep doors and windows closed, but ensure they are unlocked.
  - (d) Call 1122 and share your location, providing as much detail as possible, including the address.
  - (e) Inform us of the best access point to reach the property. If it's safe, wait near the access point and communicate with the fire crews when they arrive.

- (3) When driving through wildfire smoke:-
- (a) Keep windows closed, turn off the air conditioning, and ensure air vents remain closed.
  - (b) Smoke can irritate the eyes, skin, and respiratory system, causing coughing, wheezing, shortness of breath, and chest pain.
  - (c) People with pre-existing respiratory or heart conditions, such as asthma, should always carry necessary medications or inhalers and seek medical advice if symptoms worsen.
  - (d) Always adhere to official evacuation routes.
  - (e) Stay informed by following local social media and tuning in to your local radio station for the latest updates on the fire and potential road closures.
  - (f) Ensure your vehicle is fully fuelled, as refuelling might be challenging during an evacuation due to regional conditions or long distances.
  - (g) Check on elderly relatives and neighbours to see if they need assistance.
  - (h) Keep pets and service animals confined to one room.
  - (i) If evacuating with animals, leave as early as possible.
  - (j) Wear sturdy shoes, long cotton or woollen pants, long-sleeved shirts, and gloves.
  - (k) Carry a damp handkerchief to protect your face.
  - (l) Take wet towels to cover your head, skin, or wrap your feet, in case you need to pass through a small area of fire.

i. **During a wildfire smoke event:-**


- (1) Keeping windows and doors closed as much as possible.
- (2) Using a clean, high-quality air filter in your ventilation system, following the manufacturer's guidelines.
- (3) Using a certified portable air purifier that can filter fine particles.
- (4) If you don't have access to a ventilation system or air purifier, consider using a DIY air cleaner, but be aware of the limitations and safety risks if used in short-term emergencies.
- (5) Minimizing the use of exhaust fans, such as bathroom fans.
- (6) If you need to go outdoors, wearing a well-fitting, properly worn respirator (such as a NIOSH-certified N95 or equivalent) can help reduce exposure to fine particles (PM2.5), which are the primary health risk from wildfire smoke. Remember to check on others who may also be affected by the smoke.
- (7) Take care of your mental health during these stressful situations.

j. **After a Wildfire:-**

- (1) Watch for smouldering hot spots or objects, and take care to prevent them from reigniting.
- (2) Be cautious of hazards like burned trees, power poles, fallen wires, & ash pits.
- (3) Obtain permission from the fire brigade before re-entering the area.
- (4) Inspect for damage and avoid entering any damaged buildings.
- (5) After a wildfire, take proper precautions when cleaning your property.
- (6) Keep children away from cleanup areas.
- (7) Wear rubber gloves while cleaning.
- (8) Stay updated on the latest information from authorities by monitoring local radio, TV, or social media.
- (9) Seek immediate medical help if you are injured.
- (10) Make phone calls only for urgent emergency situations; otherwise, use other communication methods.
- (11) Stay at least 10 meters away from downed power lines to prevent electrocution.
- (12) Avoid driving through areas with fallen power lines.

8. The National Institute of Disaster Management (NIDM) has taken the lead in developing best practices for preventing and mitigating forest fires, same is attached as **Annexure A**.

9. With the request for wider circulation and public awareness.

  
**(Abdul Ghafoor Babar)**  
**Deputy Director (Response)**  
Tel No: 051-9030924  
Fax No: 051-9030729

(Distribution list attached)

**DISTRIBUTION LIST**

To: Secretary, Ministry of Interior, Islamabad  
Secretary, Ministry of National Health Services, Regulation & Coordination, Islamabad  
Secretary, Ministry of Information & Broadcasting, Islamabad  
Secretary, Ministry of Climate Change, Islamabad  
Secretary, Ministry of Communications, Islamabad  
Secretary, Ministry of Water Resources, Islamabad  
Secretary, Ministry of National Food Security & Research, Islamabad  
Secretary, Ministry of Energy, Islamabad  
Secretary, Aviation Division, Islamabad  
Secretary, Ministry of Defense, Islamabad  
Chief Secretary, Government of Balochistan, Quetta  
Chief Secretary, Government of Khyber Pakhtunkhwa, Peshawar  
Chief Secretary, Government of Punjab, Lahore  
Chief Secretary, Government of Sindh, Karachi  
Chief Secretary, Government of Gilgit Baltistan, Gilgit  
Chief Secretary, State of AJ&K, Muzaffarabad  
Director General, Pakistan Meteorological Department, Islamabad  
Director General, Pakistan Civil Aviation Authority, Karachi  
Chairman, Federal Flood Commission (FFC), Islamabad  
Chairman, National Highway Authority (NHA), Islamabad  
Chairman, WAPDA, Lahore  
General Manager, Tarbela Dam Authority  
General Manager, Mangla Dam Authority  
Director General, PDMA Balochistan, Quetta  
Director General, PDMA Khyber Pakhtunkhwa, Peshawar  
Director General, PDMA Punjab, Lahore  
Director General, PDMA Sindh, Karachi  
Director General, GBDMA, Gilgit  
Director General, SDMA AJ&K, Muzaffarabad  
Director General, Rescue 1122 Balochistan, Quetta  
Director General, Rescue 1122 Khyber Pakhtunkhwa, Peshawar  
Director General, Rescue 1122 Punjab, Lahore  
Director General, Rescue 1122 Sindh, Karachi  
Director General, Rescue 1122 Gilgit Baltistan, Gilgit  
Director General, Rescue 1122 AJ&K, Muzaffarabad  
Chief Commissioner, Islamabad Capital Territory  
Deputy Commissioner, Islamabad Capital Territory  
Principal Information Officer, Press Information Department, Islamabad  
Headquarters, Frontier Works Organization (FWO), Rawalpindi  
Headquarters, National Highways & Motorway Police, Islamabad  
Headquarters, National Electric Power Regulatory Authority, Islamabad  
Headquarters, National Transmission & Dispatch Company (NTDC), Islamabad  
Headquarters, Pakistan Railways, Lahore

Cc: Secretary to Prime Minister, Prime Minister's Office, Islamabad  
Secretary, Cabinet Division, Islamabad  
Joint Crises Management Cell, Joint Staff Headquarters, Chaklala Cantt  
Military Operations Directorate (MO-4), General Headquarters, Rawalpindi Cantt  
ACNS (Operations), Naval Headquarters, Islamabad  
ACAS (Operations), Air Headquarters, Islamabad  
Headquarters, Pakistan Maritime Security Agency (PMSA), Karachi  
Headquarters, Pakistan Coast Guards (PCG), Karachi



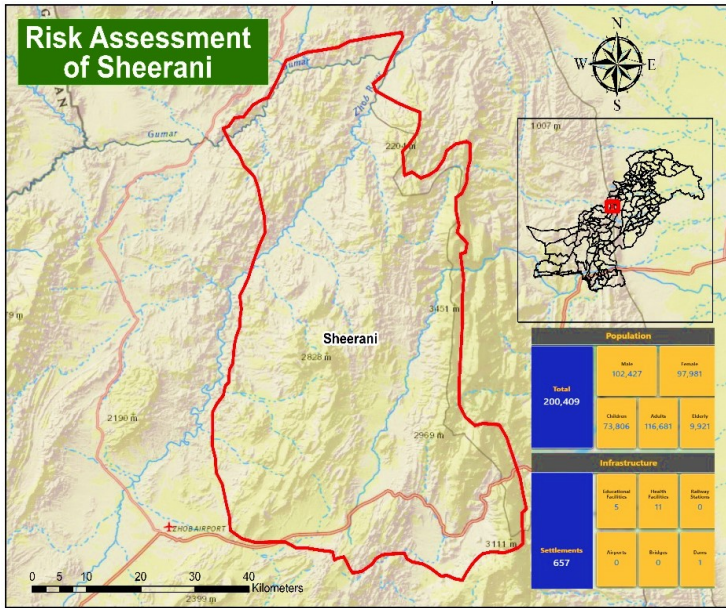


Figure: 1 Risk Assessment of Sherani District

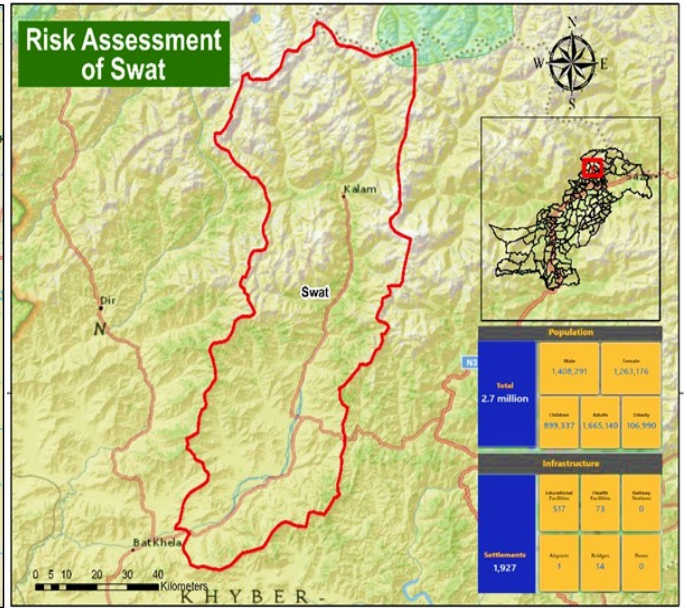


Figure: 2 Risk Assessment of Swat District

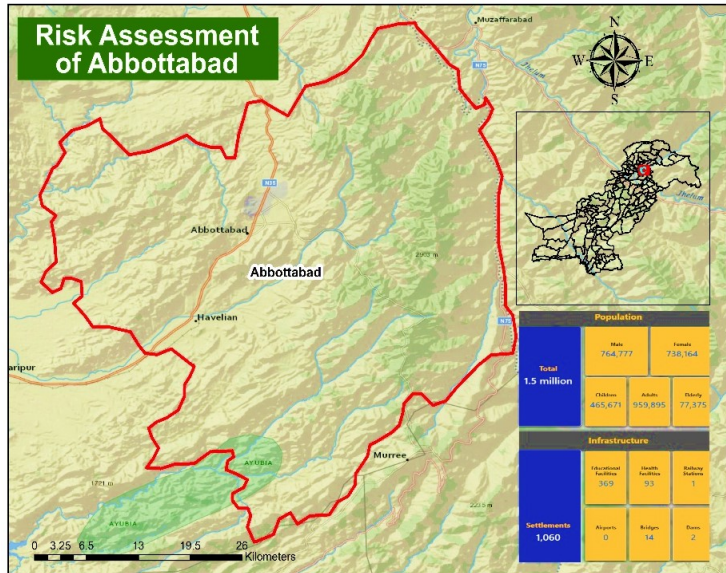


Figure: 3 Risk Assessment of Abbottabad District

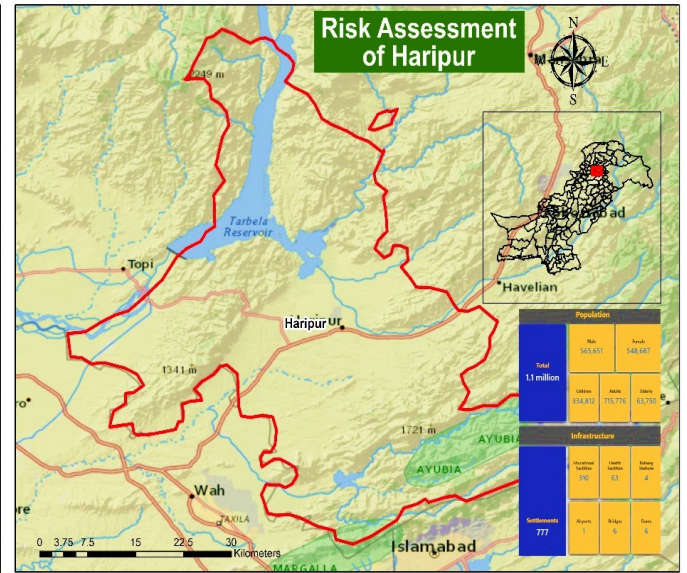


Figure: 4 Risk Assessment of Haripur District

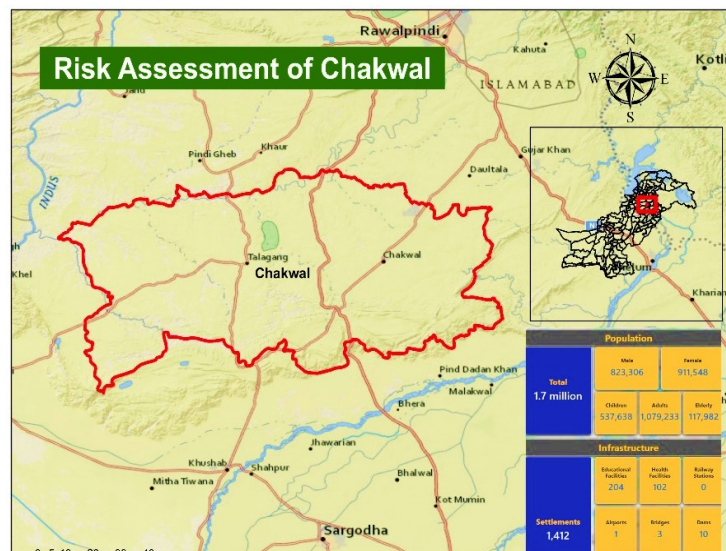


Figure: 5 Risk Assessment of Chakwal District

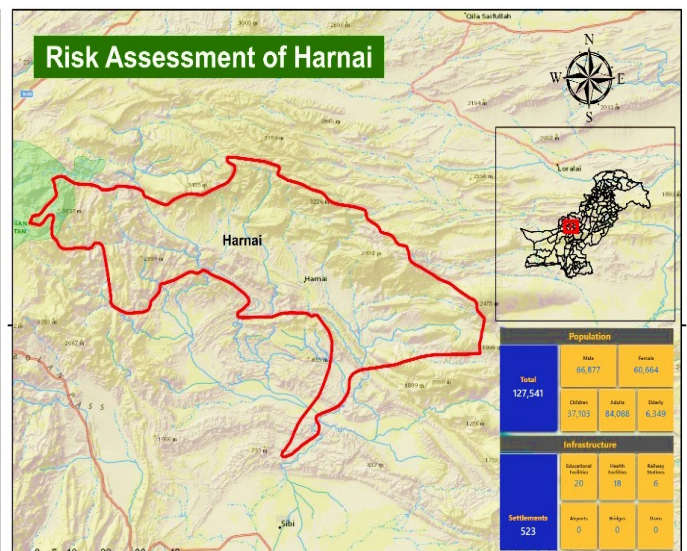


Figure: 6 Risk Assessment of Harnai District



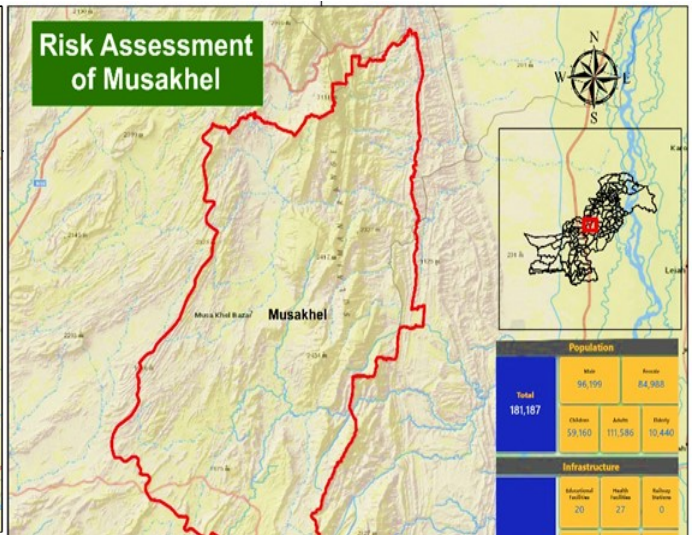
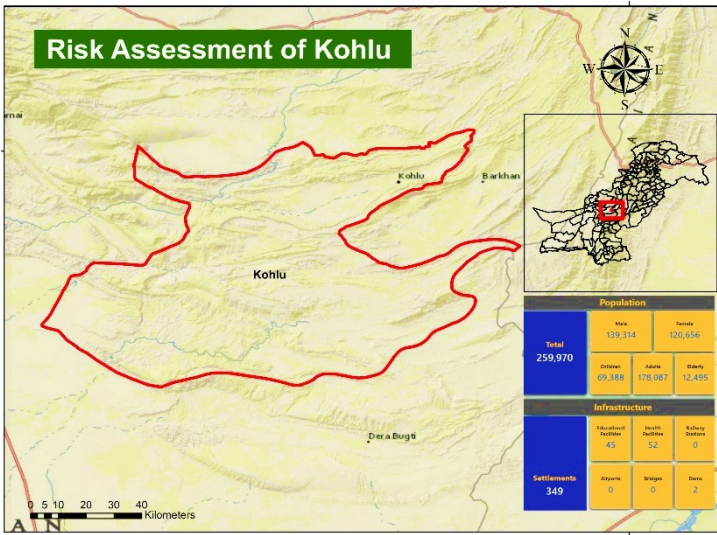


Figure: 7 Risk Assessment of Kohlu District

Figure: 7 Risk Assessment of Muskhail District

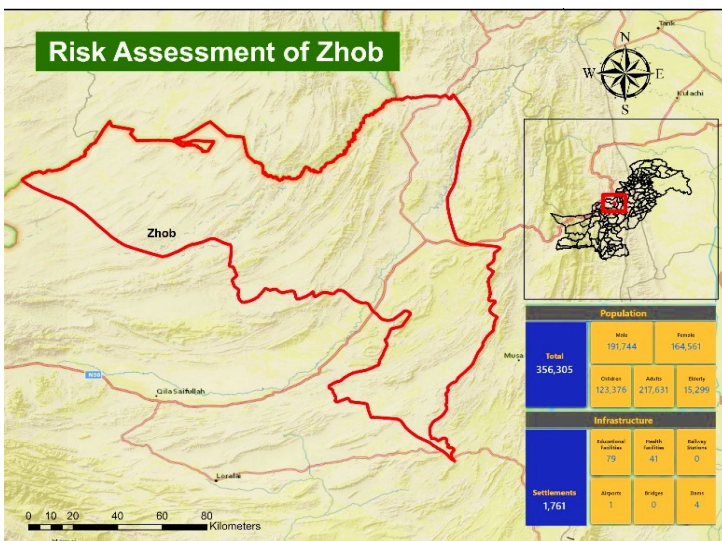


Figure: 9 Risk Assessment of Zhob

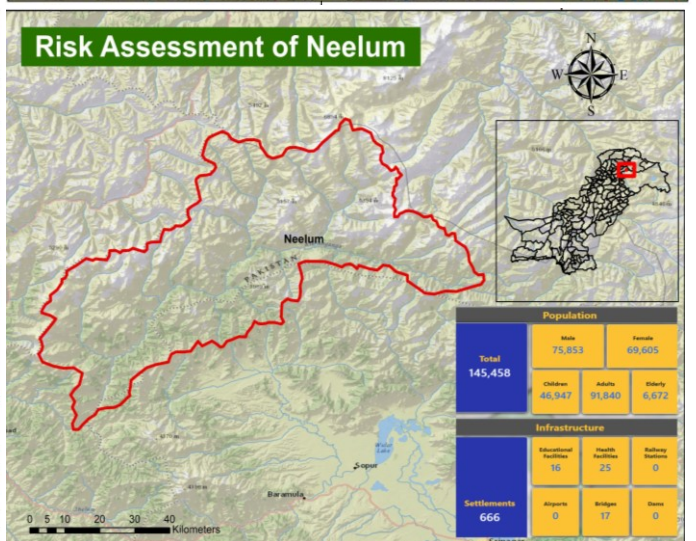


Figure: 10 Risk Assessment of Neelum

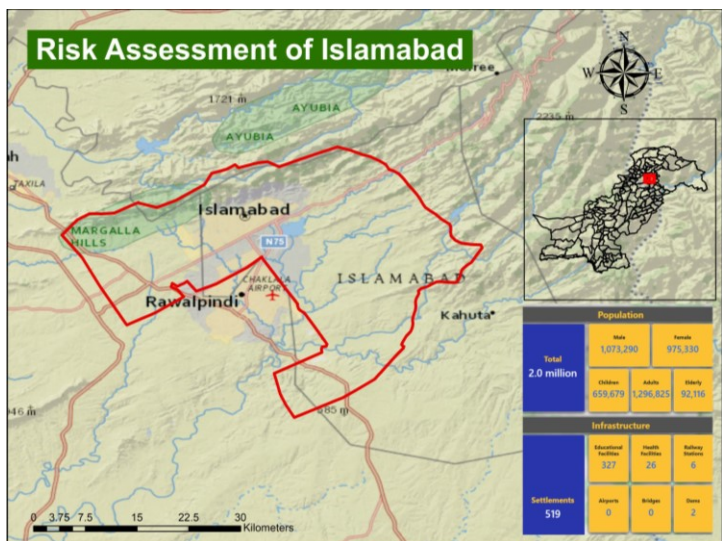


Figure: 11 Risk Assessment of Islamabad

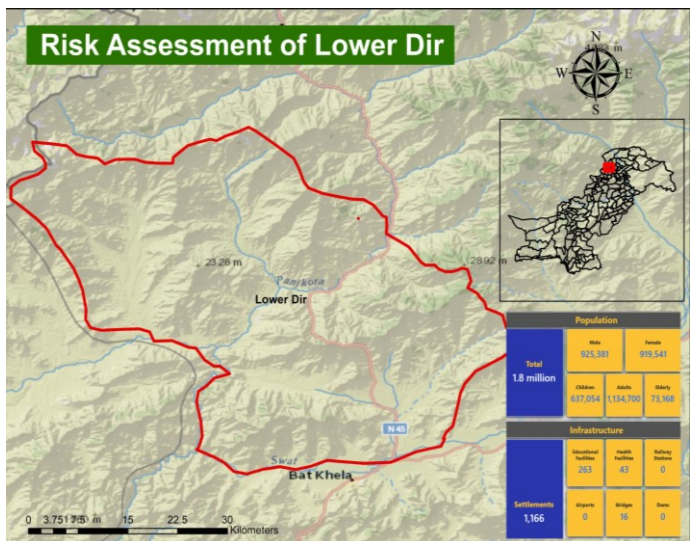


Figure: 12 Risk Assessment of Lower Dir

**FOREST FIRES MITIGATION PRACTICES AND RESEARCHED RECOMMENDATION**

1. Pakistan, like many other countries, is experiencing an increase in forest fires due to climate change. Implementing global best practices for mitigation and management can help reduce their frequency and impact.
2. **Forest Fire Impacts and Implications.** Research shows that wildfires can cause a large increase in gaseous air pollutants such as carbon monoxide, nitrogen dioxide, acetaldehyde and formaldehyde (Finlay et al., 2012). Wood smoke has high levels of particulate matter and toxins, Adverse health consequences can occur as a result of short- or long-term exposure. Respiratory morbidity predominates, but cardiovascular, ophthalmic and psychiatric problems can also result (HPI).
3. Wildfires represent a hazard that is primarily influenced by humans and thus to a degree can be predicted, controlled and, in many cases, prevented. Wildfire occurrence, characteristics and impacts are closely linked to other hazards: droughts, heat waves and extreme weather events can influence fire intensity and severity and thus the duration, size and controllability of wildfires. The effects of wildfires on vegetation cover and soil stability may create secondary hazards/subsidiary perils, such as post-fire landslides, mudslides, flash floods, erosion and siltation.
4. **Risk factors**
  - a. Increasing demand for agricultural lands for food and the necessity to use fire for land-use change.
  - b. The expansion of residential areas/infrastructures built near fire-prone.
  - c. Extended periods of drought and extreme heat.
  - d. Wildfires cause more land degradation (soil erosion, loss of land productivity) and as a consequence create more flooding and landslides.
5. **Vulnerable Areas**
  - a. Agricultural and pasture lands in which fire is used for controlling weeds, bush encroachments, and for land clearing.
  - b. Fire-prone natural forest, bush land and grassland ecosystems with high occurrence of natural fires in the subtropics or northern latitudes.
  - c. Agricultural and forest plantations.
  - d. Residential areas or scattered houses/infrastructures nearest to fire-prone vegetation.
  - e. Residential areas or individual structures made of easily flammable materials.
  - f. Abandoned rural villages and human settlements with no one to manage, prevent or respond to wildfires.



6. **Prevention Strategies**

a. **Community Awareness & Education**

- (1) Launch campaigns to educate communities on fire prevention, such as safe agricultural practices and avoiding open fires during dry seasons.
- (2) Promote community-based forest management programs.

b. **Monitoring and Early Warning Systems**

- (1) Deploy satellite-based remote sensing and Geographic Information Systems (GIS) for real-time fire monitoring.
- (2) Establish early warning systems to alert local communities and authorities.

c. **Legislation & Policy**

- (1) Strengthen laws against deforestation, illegal logging, and slash-and-burn practices.
- (2) Implement zoning policies to reduce human activities in high-risk areas.

d. **Controlled Burns**

- (1) Use prescribed burns to reduce fuel loads in a controlled and safe manner.
- (2) Train forest staff to conduct and manage these burns effectively.

7. **Response Strategies**

a. **Rapid Response Teams**

- (1) Form specialized firefighting units trained for forest fire management.
- (2) Equip them with advanced fire suppression technologies, such as aerial firefighting tools.

b. **Incident Command Systems**

- (1) Adopt standardized systems like the Incident Command System (ICS) to coordinate firefighting efforts.
- (2) Engage local, provincial, and national authorities in a unified response plan.

c. **Community Involvement**

- (1) Train and involve local communities in firefighting, especially in remote areas.
- (2) Establish volunteer societies, fire brigades to act as first responders.

8. **Partnerships**: Collaborate with international organizations for funding, expertise, research and technology transfer.

9. **Post-Fire Recovery Measures**

a. **Reforestation**

- (1) Replantation of native and fire-resistant tree species in burned areas.
- (2) Involve local communities in reforestation projects to ensure sustainability.

b. **Soil and Water Management**

- (1) Use erosion control measures like check dams and contour trenching to prevent soil degradation.

(2) Implement watershed management practices to restore hydrological balance.

c. **Wildlife Recovery**

(1) Create safe corridors and sanctuaries for wildlife affected by fires.

(2) Monitor and rehabilitate endangered species.

10. **Innovative and Technological Solutions**

a. **Drones**: Use drones for aerial surveillance and mapping of fire-prone areas.

b. **AI and Machine Learning**: Analyze historical fire data to predict and prevent future occurrences.

c. **Mobile Apps**: Develop public apps for real-time alerts and fire reporting.

11. **Risk Reduction Practices**

a. Limit development and vehicular movement in high forest fire risk areas.

b. Clear the vegetation surrounding homes and other structures.

c. Build fire lanes and/ or fire breaks between homes and any forested or bush land areas, if a natural firebreak does not exist.

d. Plant vegetation of low flammability.

e. Use fire-resistant building materials.

f. Use traditional and advanced methods of prescribed burning for sustainable agriculture and flora and fauna management.

g. Enact legislation, policies and regulation at the appropriate jurisdictional levels.

h. Conduct community-based fire risk minimization activities during all stages of fire management.

i. Provide community alerts through fire danger rating systems.

j. Educate the community and raise public awareness about the risks of wildfires.

k. Develop firefighting capacities and public safety.

l. Enhance the Integrated Forest Fire Management (IFFM) concept through increased community participation.

m. Mandatory evacuation plans can help limit the number of people affected by forest fires in areas where they are more likely to occur.

n. Conduct detailed assessments to determine which plant species are prone to igniting fires. Remove these plants from high-risk regions to lessen the likelihood of forest fires.

o. Investment in fire suppression and efforts to avert forest fires, such as cutting fuel loads and re-establishing natural fire cycles in ecosystems.

p. Implement the proven practices and tools such as fire monitoring watch towers and early detection, fire danger rating, and asset vulnerability management through buffer zones and the adoption of codes.

q. Increasing the tree-to-person ratio in Pakistan.



- r. Use drones to track fire activity, computer models to forecast fire behavior, and infra-red satellite sensor data to identify flames and heat in smoke.
- s. Establish and maintain fuel management zones around communities, infrastructure, and high-risk wildfire areas.
- t. Insurance companies should promote fire safety practices according to issued guidelines.
- u. Contribute to bush removal, forest thinning, forest floor bio-mass debris and vegetation management techniques in the sectors like logging.
- v. Create framework, like “Pakistan Wildfire Framework,” to combine innovative and efficient techniques with existing forest fire management procedures.
- w. Encourage practices of a/re/forestation and sustainable management that increase carbon sequestration while mitigating the consequences of climate change.
- x. Investigation for fire start and arson incidences and penalties be applied to individuals/responsible for intentional or negligent fires.
- y. Create defensible spaces/buffers between the building and the vegetation or any wild area that surrounds it.
- z. The skidding lanes should be installed in potentially higher risk places.
- aa. To prevent forest fires, AI is being employed at Universities and research for front tier technologies are being used to create detailed geospatial maps.
- bb. For timely responses to fire situations a rapid response force equipped with high-end extinguishing capabilities and by efficient dispatch and deployment of Rescue 1122 fire crews.
- cc. Conduct awareness campaigns and safety precautions for the upcoming forest fire season to the forest guards and communities living in or dependent on forest resources.

12. **Case Studies of Best Practices**

a. **Australia**

- (1) **Fuel Management**: Australia uses prescribed burns and community awareness campaigns to mitigate fire risks.
- (2) **Emergency Response**: The country has a well-established ICS and aerial firefighting units.

b. **United States**

- (1) **Forest Management**: Focuses on thinning overgrown forests and reintroducing natural fire regimes.
- (2) **Public-Private Partnerships**: Collaborates with NGOs and private companies for fire prevention programs.

c. **Canada**

- (1) **Early Warning**: Uses satellite monitoring and AI for early detection.
- (2) **Community Resilience**: Implements Fire Smart programs to engage local communities in fire prevention.

13. **Climate Change Adaptation**

- a. Invest in long-term strategies, such as afforestation with climate-resilient species and improved water resource management.
- b. Advocate for global cooperation in addressing the root causes of climate change.

14. By adopting and adapting these strategies, Pakistan can effectively mitigate and manage forest fires while building resilience against future climate impacts.

15. **Anticipation Actions for Forest Fire Management in Pakistan**. Anticipation actions aim to proactively reduce the likelihood and impact of forest fires by preparing systems, resources, and communities before a fire event occurs. These actions complement mitigation and response efforts.

16. **Risk Assessment and Mapping**

a. **Identifying High-Risk Areas**

- (1) Use GIS and satellite data to create detailed fire risk maps highlighting areas prone to forest fires.
- (2) Include factors like vegetation type, proximity to human activities, and historical fire data.

b. **Climate Change Scenarios**

- (1) Model the impact of changing weather patterns (e.g., higher temperatures, reduced rainfall) to anticipate future fire risks.
- (2) Identify seasonal windows of heightened vulnerability for targeted action.

c. **Multi-Hazard Assessments**. Combine forest fire risks with other climate-related risks (e.g., floods and droughts) for integrated planning.

17. **Early Warning Systems**

a. **Predictive Analytics**

- (1) Utilize AI and machine learning to analyze weather patterns and vegetation conditions for fire risk forecasting.
- (2) Integrate systems like NASA's Fire Information for Resource Management System (FIRMS) for real-time monitoring.

b. **Meteorological Input**. Collaborate with meteorological departments to monitor temperature, humidity, wind speeds, and lightning occurrences—critical factors for forest fire ignition.

c. **Community Alerts**. Develop community-specific alert mechanisms via SMS, mobile apps, and local radio broadcasts to warn residents in vulnerable areas.

18. **Preparedness and Resource Mobilization**
  - a. **Resource Prepositioning**
    - (1) Stockpile fire suppression equipment (e.g., water tanks, fire retardants) in regions identified as high-risk.
    - (2) Pre-position firefighting units near vulnerable forests during peak fire seasons.
  - b. **Training and Drills**
    - (1) Conduct fire simulation exercises to train response teams and communities in fire suppression techniques.
    - (2) Provide capacity-building programs for forest department personnel and local volunteers.
  - c. **Infrastructure Development**
    - (1) Build and maintain firebreaks—cleared or plowed strips in forests that prevent fire spread.
    - (2) Develop water storage facilities like reservoirs and ponds within or near forests for rapid access.
19. **Sustainable Forest Management**
  - a. **Vegetation Management**
    - (1) Reduce the buildup of dry leaves, deadwood, and undergrowth (fuel loads) through controlled grazing and manual clearing.
    - (2) Introduce agroforestry practices in surrounding areas to reduce dependence on forest resources.
  - b. **Planting Fire-Resistant Vegetation.** Reforest with fire-resistant native species to create natural barriers against fire spread.
  - c. **Buffer Zones.** Establish buffer zones between forests and human settlements to minimize fire risks.
20. **Community-Led Anticipatory Actions**
  - a. **Community Forest Management Groups**
    - (1) Form local committees responsible for monitoring fire risks and implementing preventive measures.
    - (2) Involve women and marginalized groups in decision-making to ensure inclusivity.
  - b. **Livelihood Alternatives.** Promote alternative livelihoods (e.g., beekeeping, eco-tourism) to reduce dependency on forest resources and slash-and-burn practices.
  - c. **Fire Danger Behaviour Regulation.** Introduce and enforce regulations on activities like campfires, agricultural burning, and industrial activities near forests during fire-prone seasons.

21. **International Cooperation and Knowledge Sharing**

- a. **International Collaboration.** Work with neighbouring countries to monitor transboundary forest fires and share resources during emergencies.
- b. **Global Partnerships.** Engage with international organizations like the UN-REDD

22. **Gap Analysis**

- a. Limit development and vehicular movement in high forest fire risk areas.
  - (1) **Current Status:** Limited enforcement in many regions. Development continues in vulnerable areas due to economic growth pressures.
  - (2) **Gap:** Lack of zoning restrictions in high-risk zones.
  - (3) **Action:** Strengthen land-use policies and enforcement, set stricter regulations for development in high-risk areas, and incorporate fire risk assessment in urban planning.
- b. Clear the vegetation surrounding homes and other structures.
  - (1) **Current Status:** Some local areas implement this practice, but it is not widespread.
  - (2) **Gap:** Limited awareness and resources for homeowners to clear vegetation.
  - (3) **Action:** Provide education and financial incentives for homeowners to clear vegetation and maintain defensible space around properties.
- c. Build fire lanes and/or fire breaks between homes and any forested or bushland areas, if a natural firebreak does not exist.
  - (1) **Current Status:** Inadequate infrastructure in many fire-prone regions.
  - (2) **Gap:** Insufficient funding and planning for fire lanes or breaks.
  - (3) **Action:** Establish government-funded programs to create fire lanes and conduct regular maintenance.
- d. Plant vegetation of low flammability.
  - (1) **Current Status:** Limited guidelines on the use of fire-resistant plant species in landscaping.
  - (2) **Gap:** Lack of widespread adoption of fire-resistant vegetation.
  - (3) **Action:** Promote fire-resistant landscaping through incentives and provide clear guidelines on plant species suitable for fire-prone areas.
- e. Use fire-resistant building materials.
  - (1) **Current Status:** In some high-risk areas, fire-resistant materials are used, but not universally.
  - (2) **Gap:** Higher costs and lack of awareness discourage adoption.
  - (3) **Action:** Mandate fire-resistant materials in building codes for fire-prone zones and provide incentives for homeowners to upgrade their structures.



- f. Use traditional and advanced methods of prescribed burning for sustainable agriculture and flora and fauna management.
  - (1) **Current Status**: Traditional methods are employed, but advanced techniques like precision burning and remote monitoring are underutilized.
  - (2) **Gap**: Limited use of modern prescribed burning methods.
  - (3) **Action**: Invest in training and tools for fire management teams to integrate advanced techniques with traditional knowledge.
- g. Enact legislation, policies, and regulation at the appropriate jurisdictional levels.
  - (1) **Current Status**: Varies by region, with some areas having strong fire management laws and others lacking them.
  - (2) **Gap**: Inconsistent legislative frameworks across regions.
  - (3) **Action**: Ensure national-level policies are consistent and adequately enforced across all levels of government.
- h. Conduct community-based fire risk minimization activities during all stages of fire management.
  - (1) **Current Status**: Community involvement is often ad-hoc and not systematic.
  - (2) **Gap**: Lack of structured community engagement.
  - (3) **Action**: Establish formal community education programs and local fire management teams.
- i. Provide community alerts through fire danger rating systems.
  - (1) **Current Status**: Fire danger systems exist but are not always effectively communicated to the public.
  - (2) **Gap**: Low awareness of fire danger systems.
  - (3) **Action**: Strengthen communication channels and promote fire danger awareness campaigns.
- j. Educate the community and raise public awareness about the risks of wildfires.
  - (1) **Current Status**: Awareness campaigns are sporadic.
  - (2) **Gap**: Insufficient public education on wildfire risks.
  - (3) **Action**: Increase funding for wildfire education campaigns, targeting both rural and urban populations.
- k. Develop firefighting capacities and public safety.
  - (1) **Current Status**: Firefighting capabilities vary by region, with some areas under-resourced.
  - (2) **Gap**: Lack of uniformity in firefighting preparedness and response.
  - (3) **Action**: Strengthen training, equipment, and emergency response coordination.

- I. Enhance the Integrated Forest Fire Management (IFFM) concept through increased community participation.
  - (1) **Current Status**: IFFM is underused in some areas.
  - (2) **Gap**: Limited community involvement in fire management.
  - (3) **Action**: Expand community training and integrate IFFM practices into local fire management systems.
- m. Mandatory evacuation plans can help limit the number of people affected by forest fires in areas where they are more likely to occur.
  - (1) **Current Status**: Evacuation plans exist but are not always mandatory or well-practiced.
  - (2) **Gap**: Lack of coordinated evacuation protocols.
  - (3) **Action**: Implement mandatory evacuation plans, conduct regular drills, and create clear evacuation routes.
- n. Conduct detailed assessments to determine which plant species are prone to igniting fires.
  - (1) **Current Status**: Some regions conduct plant assessments, but this is not universal.
  - (2) **Gap**: Inconsistent plant species risk assessments.
  - (3) **Action**: Develop and implement nationwide guidelines for assessing and removing flammable plants.
- o. Governments should invest in fire suppression and efforts to avert forest fires.
  - (1) **Current Status**: Inadequate investment in fire prevention and suppression in some regions.
  - (2) **Gap**: Underfunding of fire management programs.
  - (3) **Action**: Prioritize funding for fire suppression and prevention programs, including forest fuel management.
- p. Implement proven practices and tools such as fire monitoring watch towers and early detection.
  - (1) **Current Status**: Some regions have watch towers, but early detection tools are not universally available.
  - (2) **Gap**: Lack of comprehensive fire detection infrastructure.
  - (3) **Action**: Install more fire watch towers and integrate modern detection technologies like drones, satellites, and sensors.
- q. The government should confirm its commitment to increasing the tree-to-person ratio in Pakistan.
  - (1) **Current Status**: There are no clear policies to address the tree-to-person ratio.
  - (2) **Gap**: Lack of tree planting and forest restoration initiatives.

- (3) **Action:** Launch large-scale tree planting initiatives and forest restoration programs.
- r. Use drones to track fire activity, computer models to forecast fire behavior, and satellite data to identify flames
  - (1) **Current Status:** Limited use of drones and satellite data in many regions.
  - (2) **Gap:** Insufficient integration of cutting-edge technology.
  - (3) **Action:** Expand the use of drones, satellite data, and fire forecasting tools for real-time monitoring.
- s. Establish and maintain fuel management zones around communities, infrastructure, and high-risk wildfire areas.
  - (1) **Current Status:** Some communities have fuel management zones, but they are not always well-maintained.
  - (2) **Gap:** Lack of regular maintenance of these zones.
  - (3) **Action:** Implement systematic fuel management programs and enforce regular upkeep of zones.
- t. Insurance companies should promote fire safety guidelines.
  - (1) **Current Status:** Some insurance companies provide fire safety guidelines, but it's not widely enforced.
  - (2) **Gap:** Limited insurance involvement in fire prevention.
  - (3) **Action:** Require insurance companies to incentivize fire prevention measures through premium reductions.
- u. Contribute to the fight against fuel through brush removal, forest thinning, and vegetation management techniques.
  - (1) **Current Status:** Vegetation management is practiced, but not consistently across regions.
  - (2) **Gap:** Lack of coordinated efforts for vegetation management.
  - (3) **Action:** Develop government-funded programs for systematic brush removal and forest thinning.
- v. Create framework, like "Pakistan Wildfire Framework," to combine AI techniques with existing forest fire management procedures.
  - (1) **Current Status:** AI techniques are being explored but are not fully integrated.
  - (2) **Gap:** Insufficient AI-based approaches in wildfire management.
  - (3) **Action:** Develop and implement an AI-based framework for wildfire risk assessment and management.
- w. Encourage practices of forestation and sustainable management that increase carbon sequestration.
  - (1) **Current Status:** Forestation practices exist but are not widespread.

- (2) **Gap:** Limited focus on sustainability and carbon sequestration.
- (3) **Action:** Promote afforestation programs and sustainable forest management practices to increase carbon storage.
- x. Penalties should be applied to individuals who intentionally or negligently cause fires.
  - (1) **Current Status:** Some areas have penalties, but enforcement is inconsistent.
  - (2) **Gap:** Lack of strict enforcement and penalties.
  - (3) **Action:** Strengthen legal frameworks and increase enforcement of penalties for negligent or intentional fire setting.
- y. Create defensible spaces between the building and the vegetation or any wild area that surrounds it.
  - (1) **Current Status:** Some homes have defensible spaces, but it is not mandatory.
  - (2) **Gap:** Limited adoption of defensible spaces.
  - (3) **Action:** Mandate defensible spaces in high-risk areas and incentivize homeowners to create them.
- z. The skidding lanes should be installed in higher-risk places.
  - (1) **Current Status:** Skidding lanes are not widely used.
  - (2) **Gap:** Lack of infrastructure in forested areas.
  - (3) **Action:** Develop and implement skidding lane systems in high-risk forest areas.
- aa. In order to prevent forest fires, frontier technologies are being used to create detailed geospatial maps.
  - (1) **Current Status:** Limited use of geospatial maps in fire prevention.
  - (2) **Gap:** Lack of comprehensive geospatial mapping.
  - (3) **Action:** Invest in geospatial mapping technologies and integrate them into fire risk management plans.
- bb. Provide timely responses to fire situations by efficient dispatch and deployment of Rescue 1122 fire crews.
  - (1) **Current Status:** Fire response systems exist but are not always efficient.
  - (2) **Gap:** Delayed response times due to resource limitations.
  - (3) **Action:** Strengthen emergency response capabilities, including timely deployment of firefighting units.
- cc. Deception and outright theft of forest products should be considered as forestry transaction crimes.
  - (1) **Current Status:** Theft of forest products is not always treated as a crime.
  - (2) **Gap:** Lack of criminalization of forest product theft.
  - (3) **Action:** Implement legislation that treats theft of forest products as a criminal offense and enforce it rigorously.



- dd. Conduct the country's health awareness campaigns and safety precautions for the upcoming forest fire season.
- (1) **Current Status**: Health campaigns exist but are not comprehensive.
  - (2) **Gap**: Inadequate focus on health awareness.
  - (3) **Action**: Launch national health and safety awareness campaigns leading up to fire seasons, emphasizing prevention and safety measures.