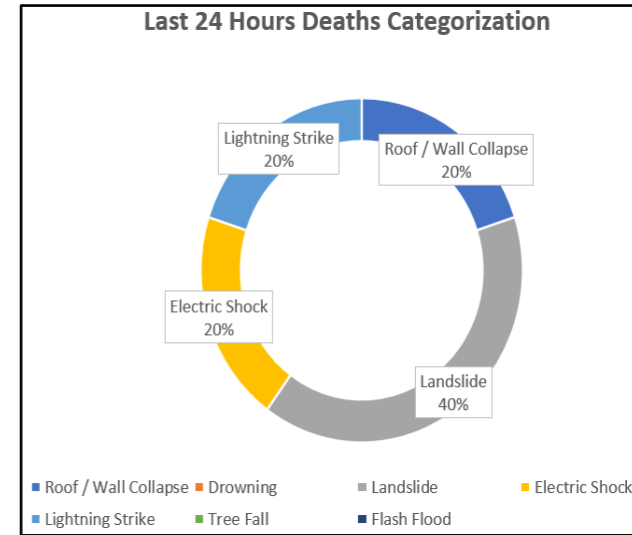
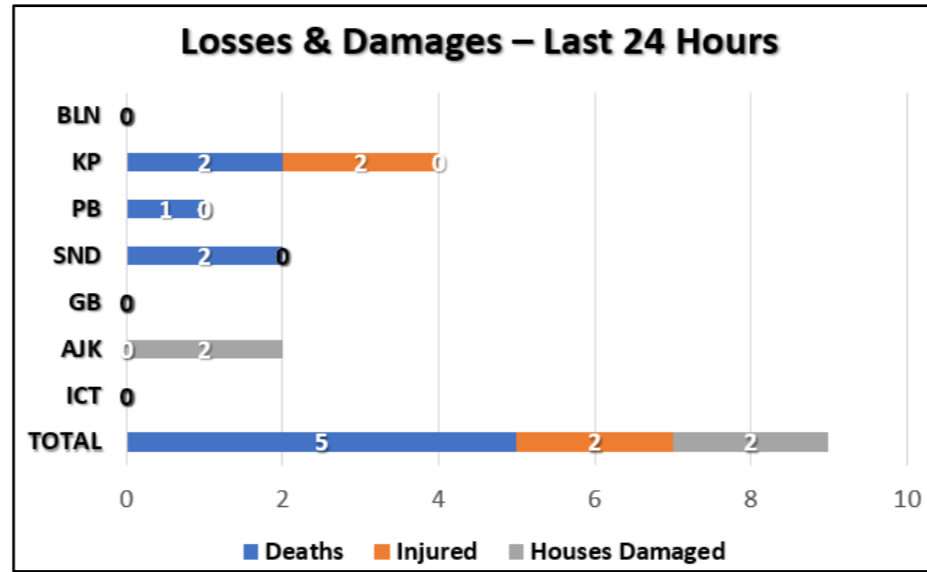
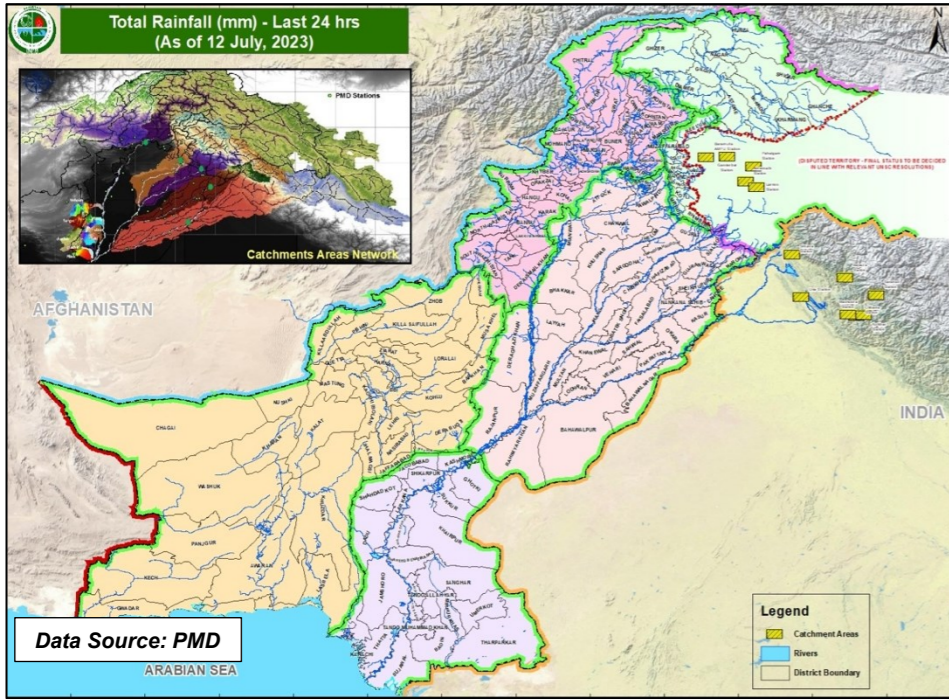
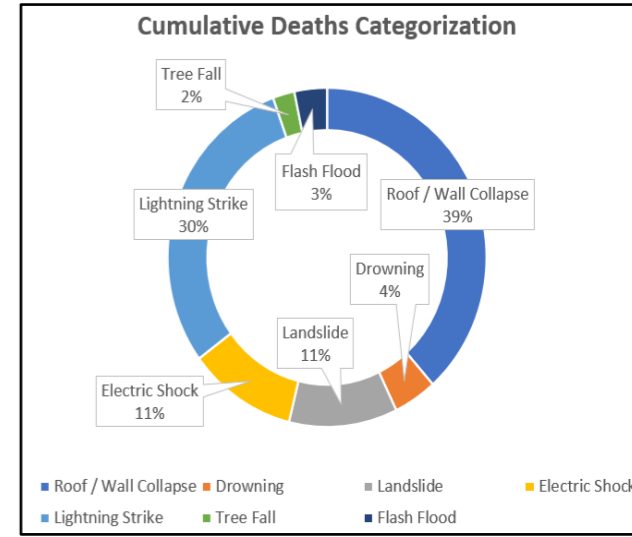
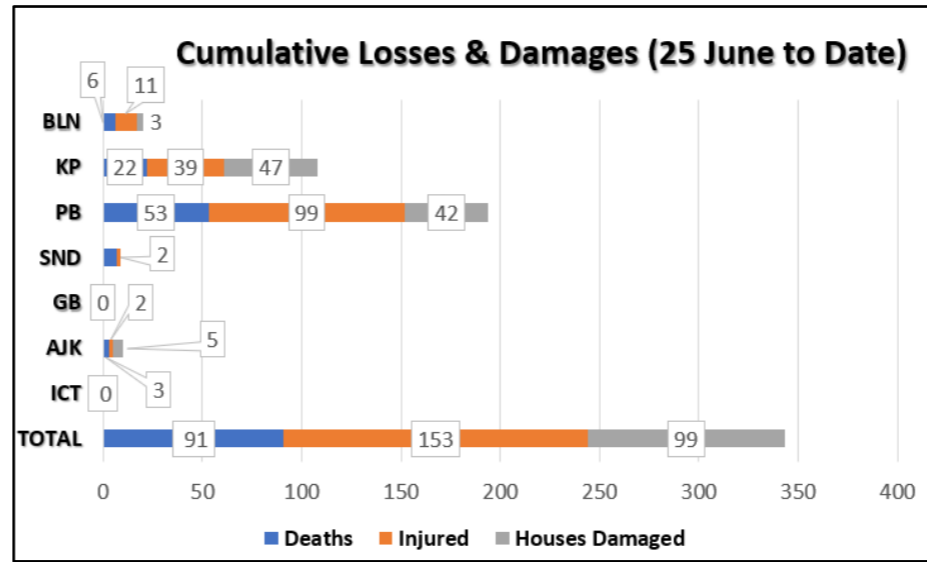
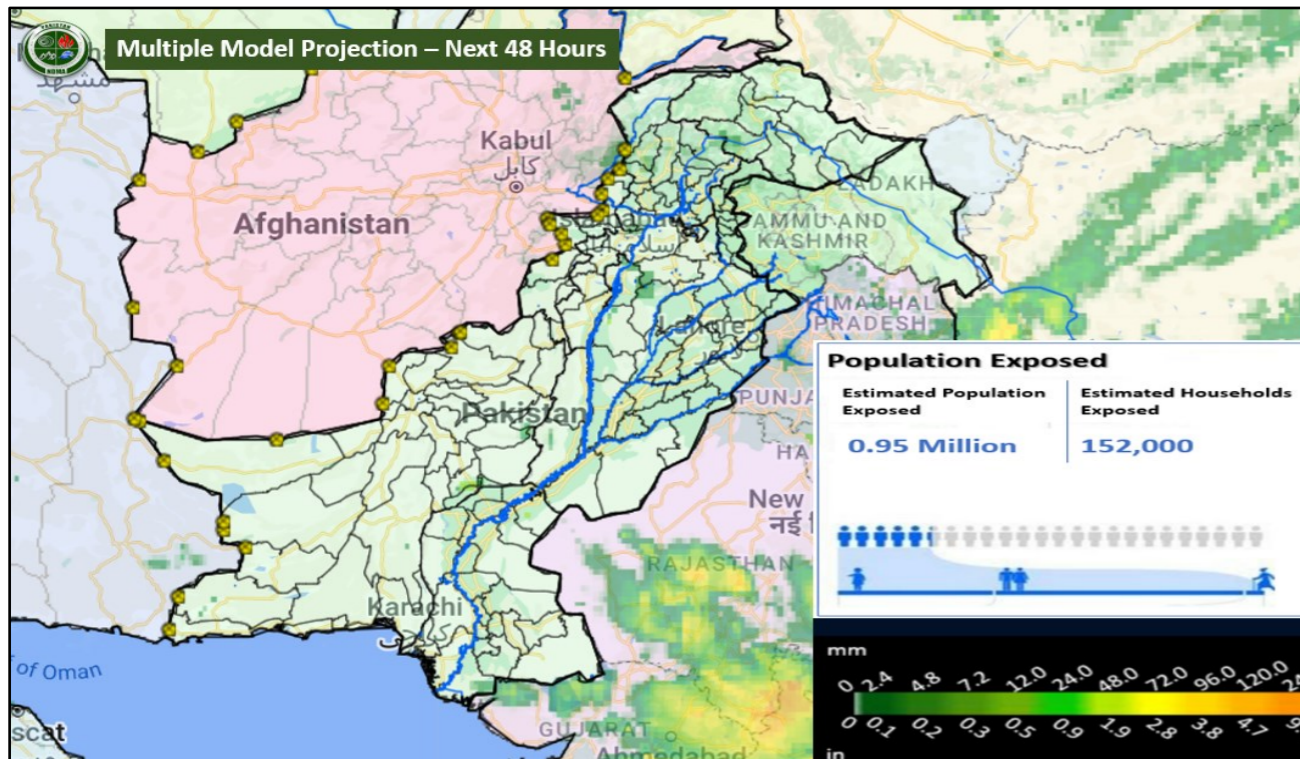


# NDMA – MONSOON RAINS – MULTIPLE MODEL PROJECTION (12 JULY 2023 – 1200 hrs)



- TOP RAINFALL RECORDED LAST 24 HOURS (MM)**
- ICT. Nil.
  - Balochistan. Nil.
  - KP. Nil.
  - Punjab. Nil.
  - Sindh. Nil.
  - GB. Nil.
  - AJK. Nil.





RIVERS	Stations	Actual Observations at 0600 PST		Quantitative Forecast for Next 24-hrs. (Inflow)	Qualitative Forecasted Flood Level (Inflow)
		Inflow	Outflow		
INDUS	Tarbela	143.0	117.4	135-145	Below Low
	Kalabagh	181.3	173.8	No significant change	-do-
	Chashma	219.2	214.5	-do-	-do-
	Taunsa	222.1	196.2	-do-	-do-
	Guddu	188.3	148.0	-do-	-do-
	Sukkur	140.7	85.6	-do-	-do-
	Kotri	70.8	29.6	-do-	-do-
KABUL	Nowshera	42.8	42.8	-do-	-do-
JHELUM	Mangla	45.0	10.0	40-50	-do-
	Rasul	3.4	0.0	No significant change	-do-
CHENAB	Marala	66.7	43.6	50-65	-do-
	Khanki	73.8	66.4	50-70	-do-
	Qadirabad	70.7	60.7	60-70	-do-
	Trimmu	91.2	77.7	100-150	Low
	Punjnad	25.6	11.6	No significant change	Below Low
RAVI	Jassar	23.7	23.7	15-23	-do-
	Shahdara	22.3	22.3	No significant change	-do-
	Balloki	43.3	25.2	45-50	Low
	Sidhnai	22.3	7.3	No significant change	Below Low
SUTLEJ	G.S.Wala	57.4	57.4	60 R 150	Medium to High
	Sulemanki	31.1	19.1	35-45	Below Low
	Islam	5.2	4.3	No significant change	-do-

Data Source: FFD

### FORECASTED IMPACT NEXT 24-48 HOURS

- **Medium – High Level Flooding** is expected in River Sutlej at Ganda Singh Wala with probable impact on **low-lying areas adjacent to riverbank**.
- **Rain-Wind-Thundershowers with possibility of heavy falls**
  - **AJ&K** (*Neelum, Muzaffarabad, Poonch, Hattian, Bagh, Haveli, Sudhnoti, Kotli, Bhimber, Mirpur*).
  - **Gilgit Baltistan** (*Diامر, Astore, Ghizer, Skardu, Hunza, Gilgit, Ghanche, Shigar*).
  - **Khyber Pakhtunkhwa** (*Galliyat, Mansehra, Kohistan, Abbottabad, Haripur, Peshawar, Mardan, Swabi, Nowshera, Dir, Shangla, Buner, Chitral, Swat, Kurram, Bannu, Lakki Marwat, Kohat, DI Khan, Karak, Waziristan*).
  - **Punjab** (*Rawalpindi, Murree, Lahore, Gujranwala, Attock, Chakwal, Jhelum, Mandi Bahauddin, Sialkot, Narowal, Gujrat, Okara, Kasur, Mianwali, Khushab, Sargodha, Hafizaabad, Sheikhpura, Faisalabad, Jhang, TT Singh, DG Khan, Rajanpur, Multan, Bhakkar, Layyah, Kot Addu*).
  - **Sindh** (*Sukkur, Jacobabad, Tharparkar, Umerkot, Sanghar, Mirpurkhas*).
  - **Balochistan** (*Barkhan, Loralai, Kalat, Khuzdar, Zhob, Lasbela, Awaran, Musakhel*).
  - **Islamabad Capital Territory**
- **Urban flooding** in municipal areas (*as indicated above*) and **landsliding** in hilly / mountainous regions of Balochistan, KP, Punjab, GB & AJK.
- **Dust / wind-thunderstorms** may cause damage to loose structures (electrical poles, solar panels, billboards, tall trees or under construction structures).

### GUIDANCE ISSUED

- **City / District Administrations** are to **ensure contingency traffic plans** for areas vulnerable to flooding in urban centres, (*as indicated above*) catering for **prompt de-watering operations in flooded underpasses**.
- All **District Administrations** to **ensure completion of stock taking** and reconnaissance and **public awareness** / information in **vulnerable areas**, especially **River Chenab at Trimmu, Jassar on River Ravi** with respect to **increased flood flows** until 20 July.
- **PDMA Punjab** to ensure **early warning, prompt response & evacuations** in **low-lying at-risk areas** along the banks of Rivers Chenab, Ravi, Sutlej and its associated Nullahs (*as indicated above*).
- **Rescue Services, Armed Forces** and leading **NGOs/CSOs** to **ensure availability of personnel / equipment** in the indicated areas & **be on stand-by for rapid response**.