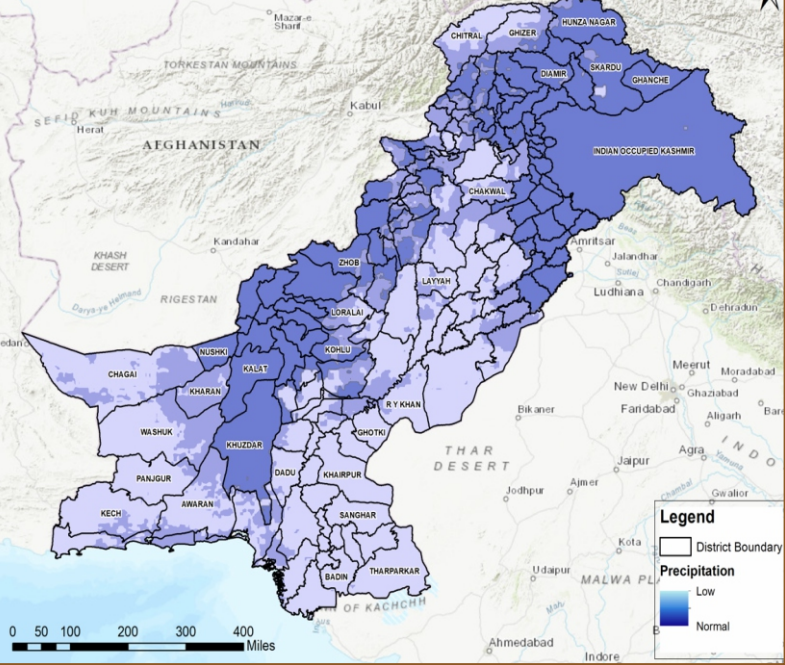




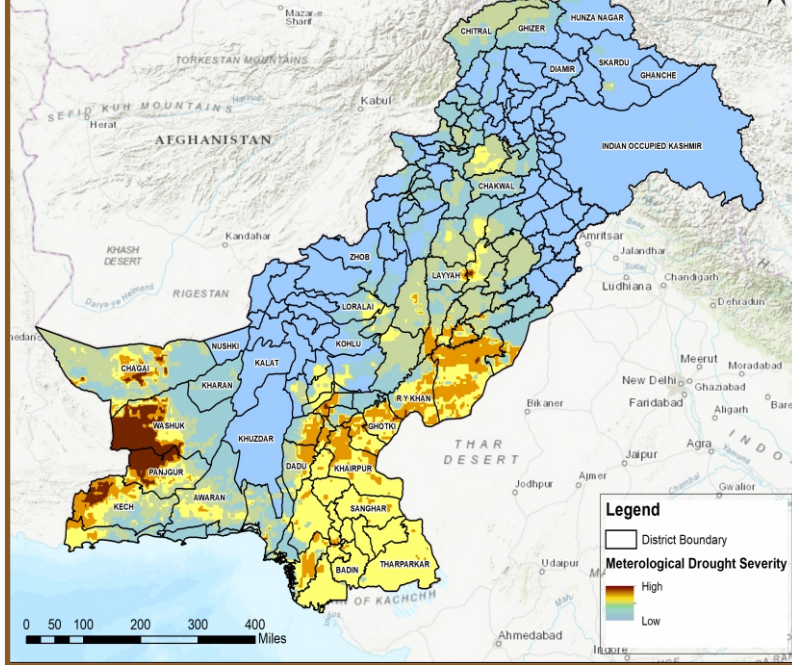
METEOROLOGICAL DROUGHT



Rainfall Deficit Map



Meteorological Drought Map

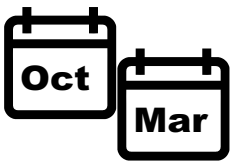


FORECAST

The recent western disturbance systems in the country could not produce significant rainfall, resulting in deficient precipitation nationwide and creating mild meteorological drought-like conditions.

From September 1, 2024, to January 15, 2025, the country received 40% below-normal rainfall. The most significant anomalies were observed in Sindh (-52%), Balochistan (-45%), and Punjab (-42%).

BE PREPARED FOR DROUGHT



Peak season is October through March

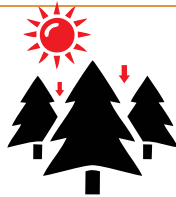


That last weeks or several months

LIKELY IMPACTS OF DROUGHT



Economic Losses



Environmental Degradation



Water Scarcity



Decrease in Crop productivity

LIKELY EXPOSED AREAS

SINDH

Hyderabad	Jacobabad	Karachi	Badin	Khairpur	Shaheed Benazirabad
Larkana	Tharparkar	Padidan	Matiari	Thatta	Dadu Ghotki

BALUCHISTAN

Awaran	Ormara	Kech
Dalbandin	Lasbella	Chagai

PUNJAB

Bahawalpur	Muzafazagar	Bhakkar	Chakwal	DG Khan	Khushab	Layyah
Rawalpindi	Islamabad	Faisalabad	Mianwali	Sargodha	Rajanpur	Multan