



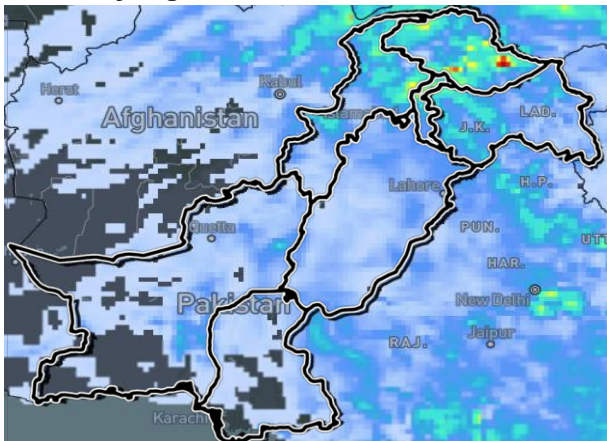
# LANDSLIDE ADVISORY

27<sup>th</sup> May to 31<sup>st</sup> May, 2025




## Forecast

 As heavy to moderate rain may persist for few days, localized landslides may occur in very high to moderate risk zones.



## Exposed RDs of KKH

 Mansehra (RD 120), Kolai Palas (RD 160-180), Upper Kohistan (RD 220-240), Darel (RD 290), Diamir (around RD 360), Gilgit (RD 390), and Nagar (RD 455), Hunza (RD 540) and along with nearby areas.

