

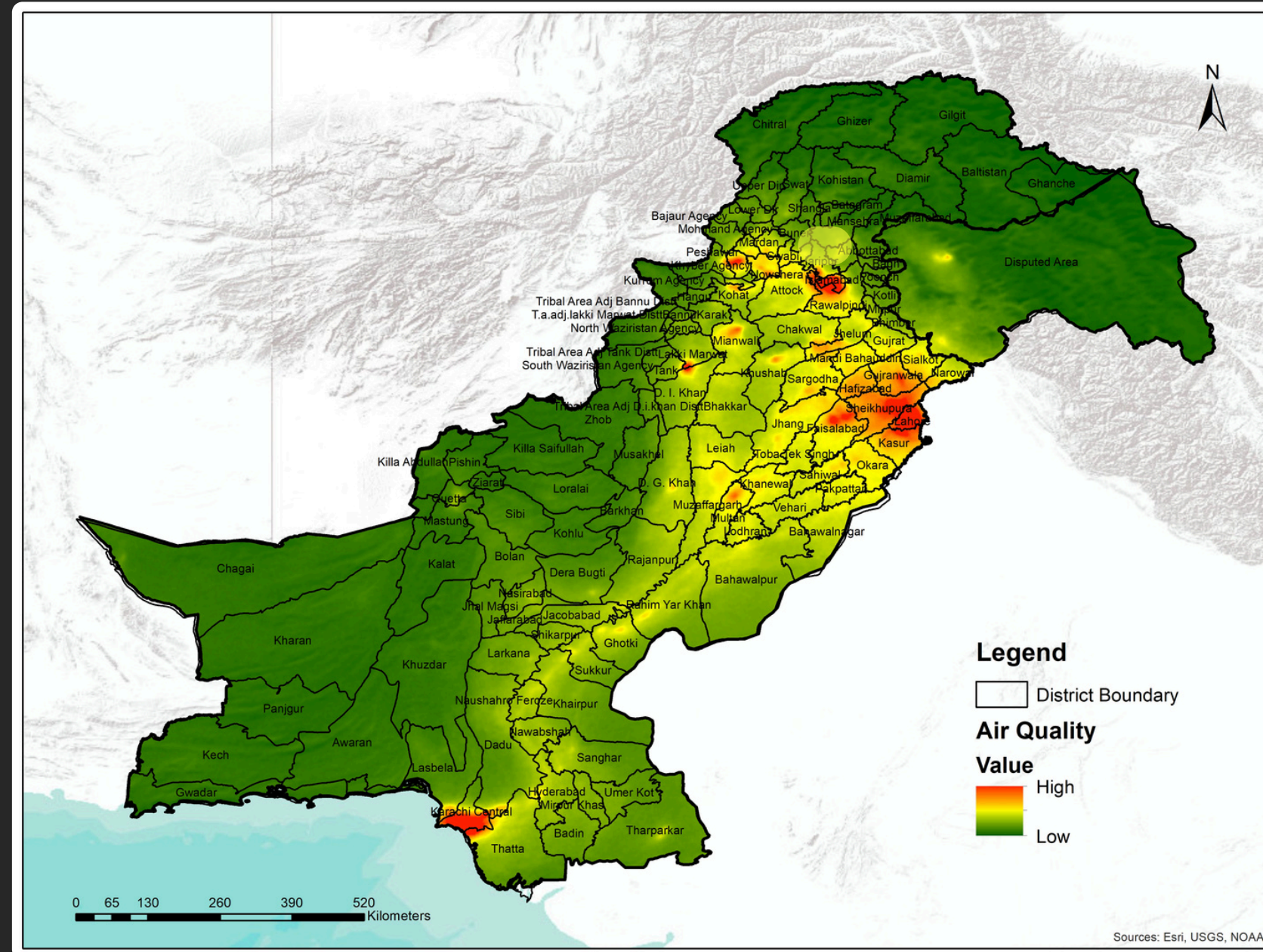


# SMOG ADVISORY FOR NOVEMBER 2024



NATIONAL EMERGENCY OPERATION CENTER - NATIONAL DISASTER MANAGEMENT AUTHORITY

In November, stable weather conditions are anticipated characterized by limited wind movement, increased humidity, and lower temperatures, which can lead to the formation of dense smog.



## Moderate to High Smog Vulnerability:

Dense smog is likely to prevail in the following cities:

**Lahore, Gujranwala, Sheikhupura, Kasur, Hafizabad, Nankana Sahib and Faisalabad.**

## Low to Moderate Smog Vulnerability:

Thin smog is anticipated to prevail over the areas of:

**Sargodha, Jhang, Sialkot, Mandi Bahauddin, Narowal, Peshawar, and Mianwali.**

## Impacts of Smog

- Health Risks:** Smog increases respiratory and cardiovascular diseases, burdening healthcare. Vulnerable populations, including children, the elderly, and people with preexisting health conditions, are at heightened risk.
- Crop Damage:** Pollutants harm crops, threatening food security and farmer livelihoods.
- Traffic Hazards:** Low visibility raises road accident risks and disrupts travel.

## Precautionary Measures

- Wear Masks:** Use N95 or similar masks to reduce inhalation of harmful particles when outdoors.
- Limit Outdoor Activities:** Avoid outdoor exercise or prolonged exposure, especially during peak smog hours.
- Use Air Purifiers Indoors:** Improve indoor air quality by using air purifiers.
- Stay Informed:** Monitor local air quality reports and follow advisories on high-smog days.