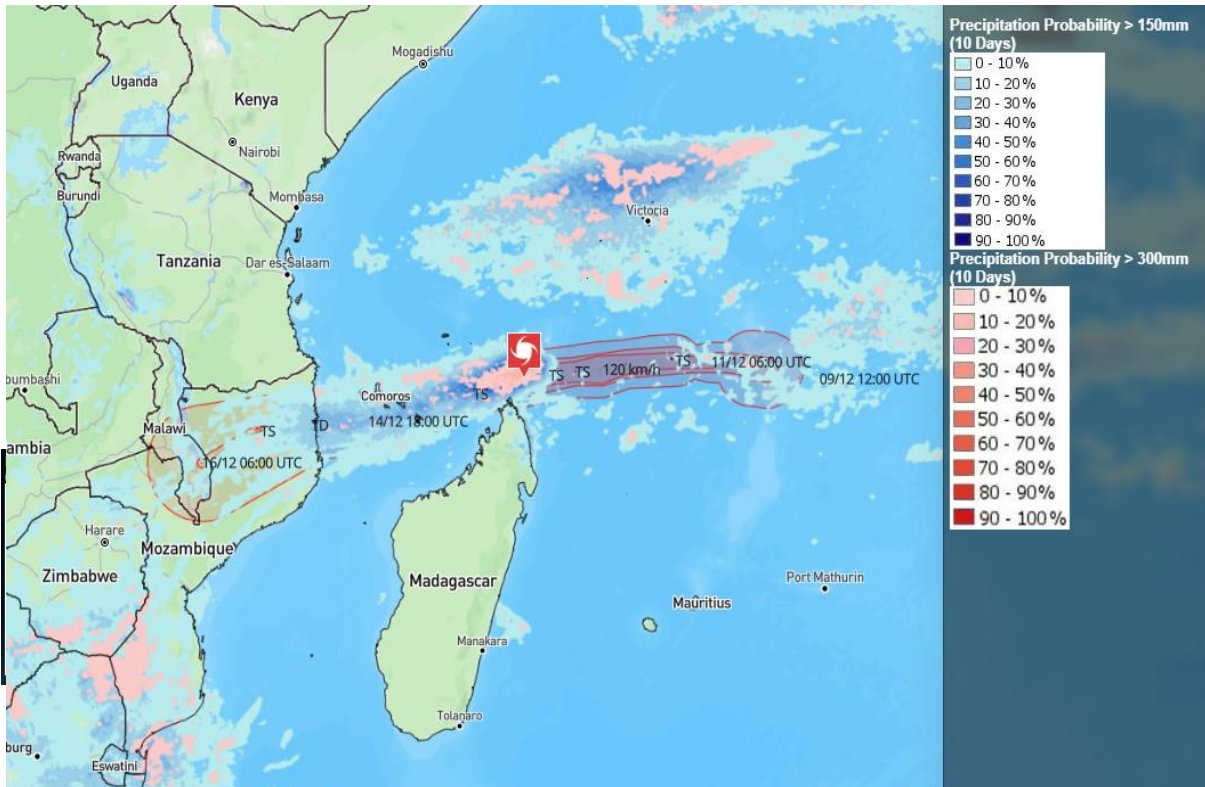




Tropical Cyclone CHIDO Update



Current Location: Approximately 702 km east of Antsiranana city, Diana Region, northern Madagascar.

Hazard Type: Tropical cyclone

Intensity: Heavy

Expected Time of Occurrence: 2024-12-13 to 2024-12-16

Expected Weather Conditions:

Heavy to very heavy rainfall and strong winds in following regions:

Northern Madagascar (12-14 December).

Mayotte and Comoros (12-14 December).

Northern and northeastern Mozambique (15-16 December).

Cyclone Summary:

Tropical Cyclone CHIDO, with sustained winds of 176 km/h and gusts up to 250 km/h, is forecast to strengthen as it moves west-southwest, likely impacting northern Madagascar on 13 December (high probability). Heavy rainfall, strong winds, and flooding are expected in Mayotte, Comoros, and Mozambique from 14-16 December (moderate to high probability). Coastal areas face significant risks of storm surges and disruptions to infrastructure.