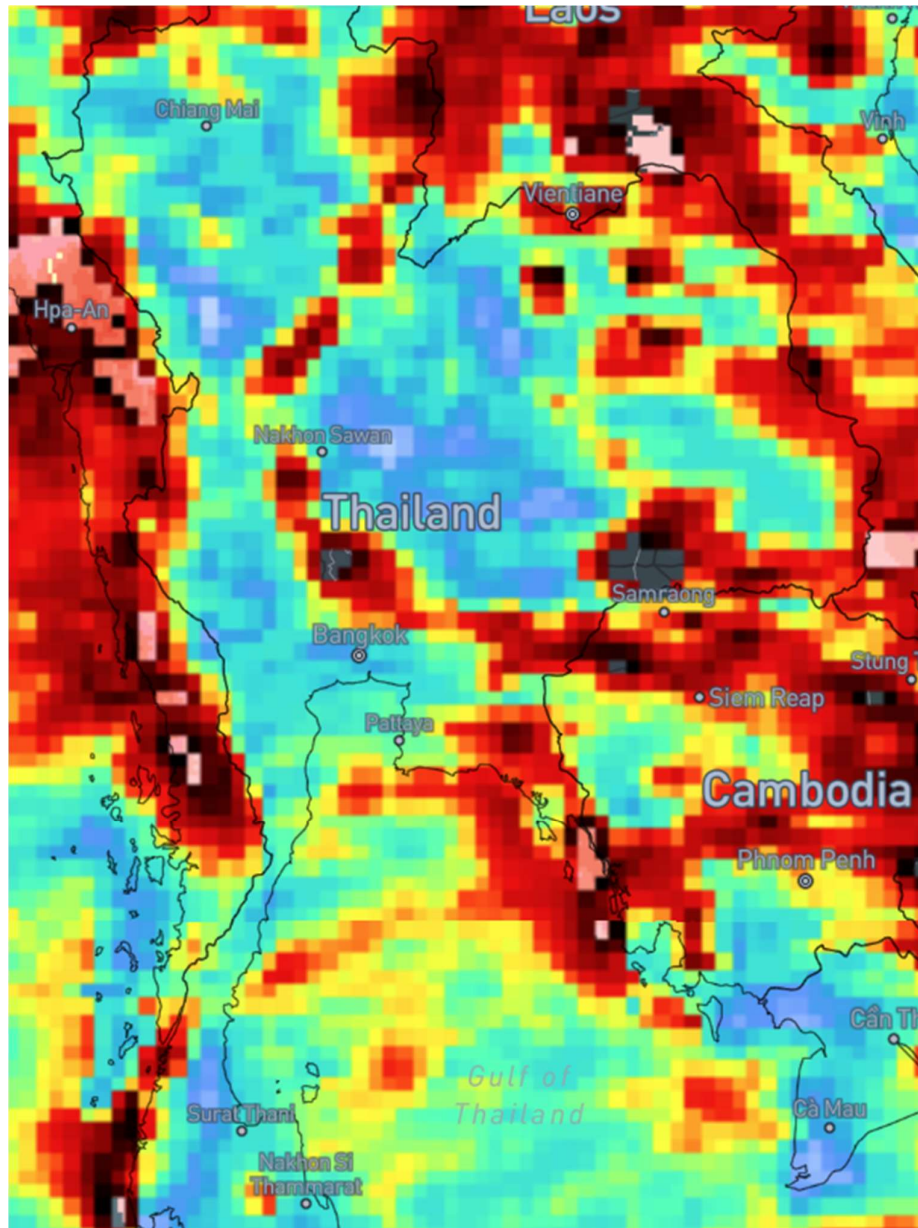




## Heavy Rains/Flash Floods – Thailand



### Affected Areas

Northern Thailand, Coastal provinces along the Andaman Sea and Gulf of Thailand

### Duration

July 11-12, 2025

### Hazard Types

Flash Floods/Landslides

### Hazard Summary

The prevailing southwest monsoon over the Andaman Sea, Thailand, and the Gulf of Thailand is causing isolated heavy to very heavy rains across several regions.