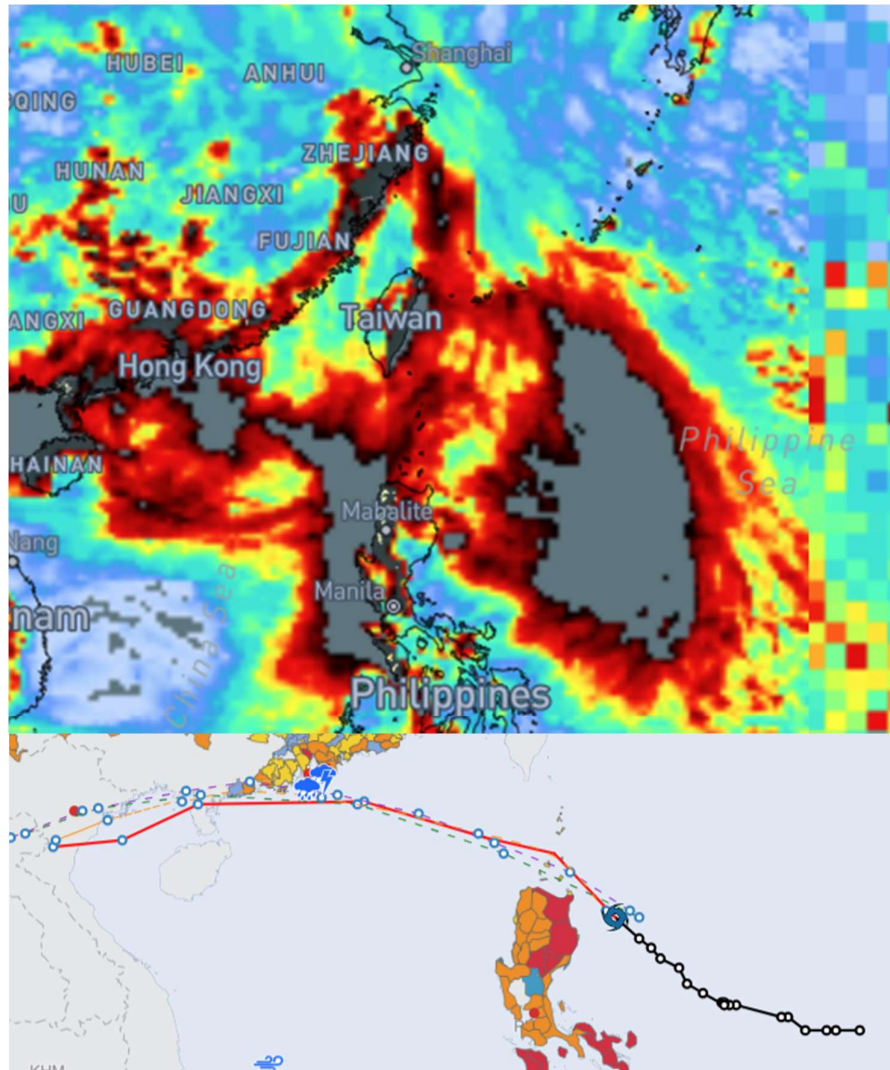




Tropical Storm - (TS) WIPHA



Affected Areas

Beijing, Macao, Hong Kong, South China Sea region

Duration

July 17-19, 2025

Hazard Types

Heavy Rainfall, Strong Winds, Localized Flooding, and Rough Sea Conditions.

Hazard Summary

TS WIPHA has shown a gradual increase in intensity from a Tropical Depression (TD) to a Tropical Storm.