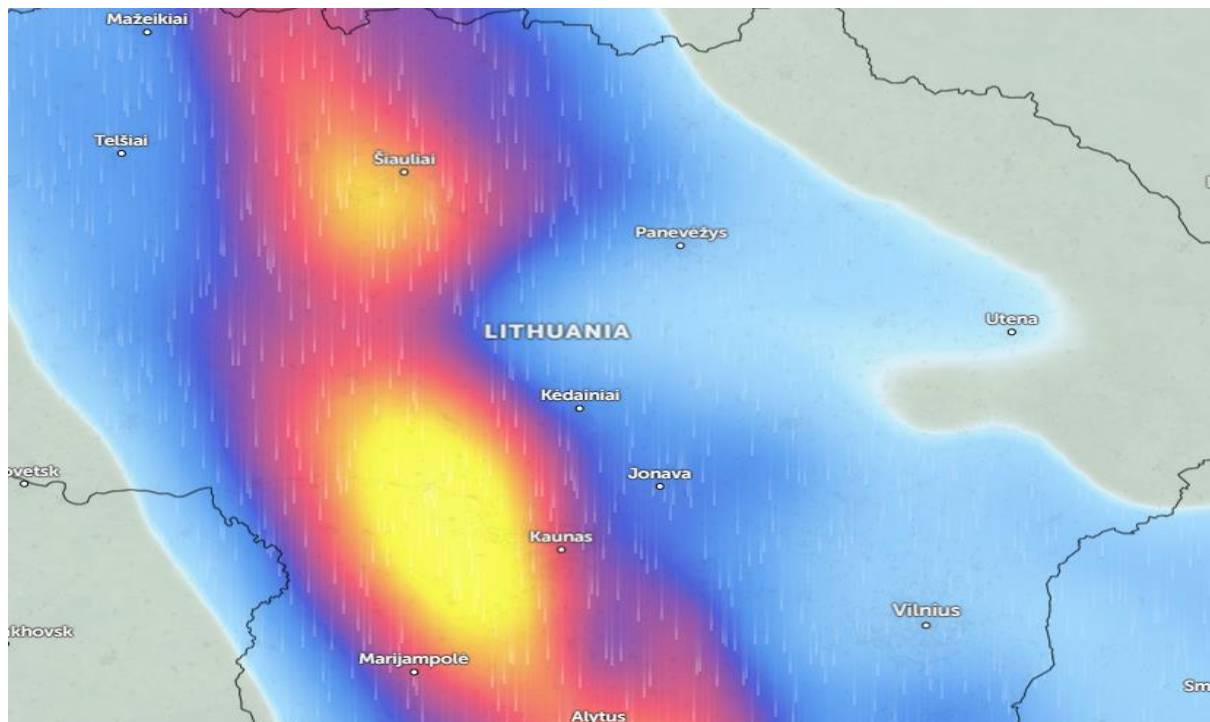




Heavy Rainfall in Lithuania



Affected Areas

Mazeikiai, Šiauliai, Kelme, Raseiniai, Kaunas, Prienai, Alytus Lithuania

Duration

July 30-31 2025

Hazard Types

Intensive Rainfall/Flooding

Hazard Summary

Heavy rainfall is currently affecting central and western parts of Lithuania, particularly around the Kaunas and Šiauliai regions. These areas are experiencing intense rainfall that could lead to localized flooding and waterlogging. Residents and authorities should remain vigilant, monitor weather updates, and be prepared for possible disruptions. Caution is advised for travel and outdoor activities due to wet and potentially hazardous conditions. Stay informed through official weather channels for further updates and safety instructions.