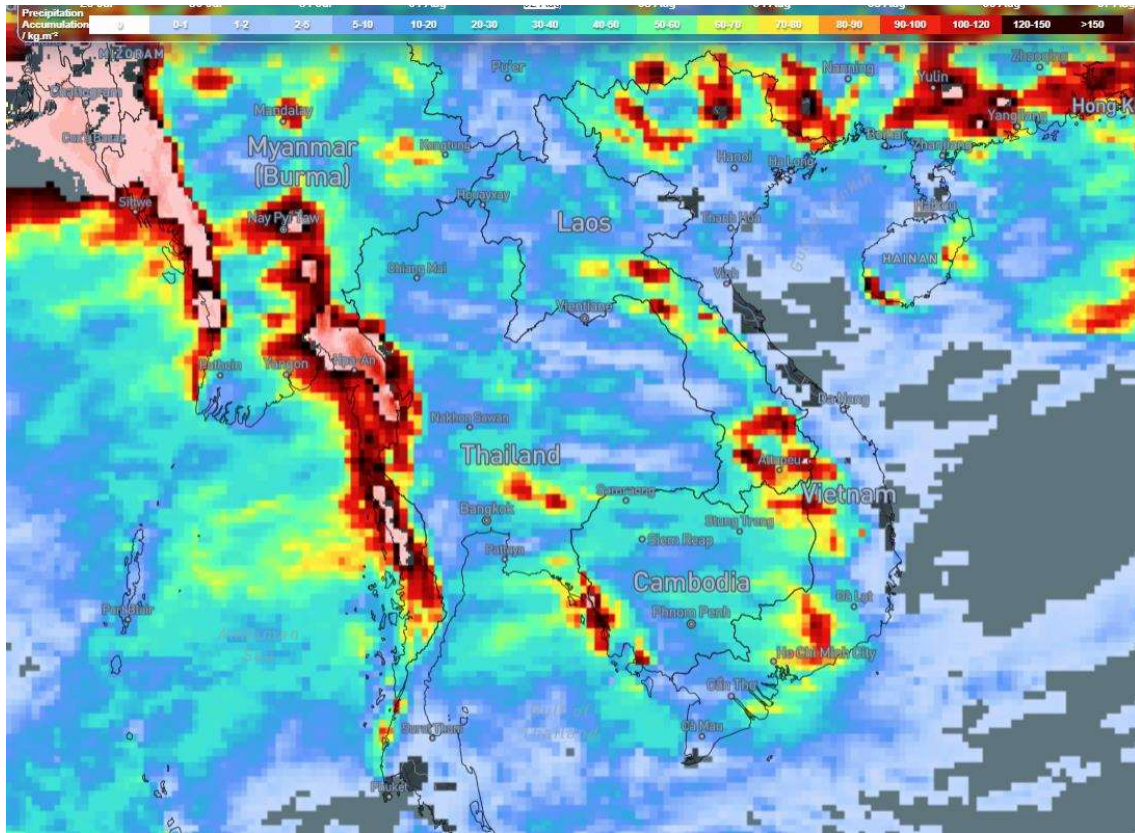




## Heavy Rain - Thailand



### Affected Areas

Udon Thani, Nong Khai, Sakon Nakhon, Nakhon Phanom, Nan, Phayao, Chiang Rai

### Duration

July 28-29, 2025

### Hazard Types

Monsoon-Driven Very Heavy Rain and Flash Flood Risk

### Hazard Summary

The monsoon trough stretches across the upper North and Laos into a low-pressure cell over northern Vietnam. A moderate southwest monsoon influences the Andaman Sea, Thailand, and the Gulf