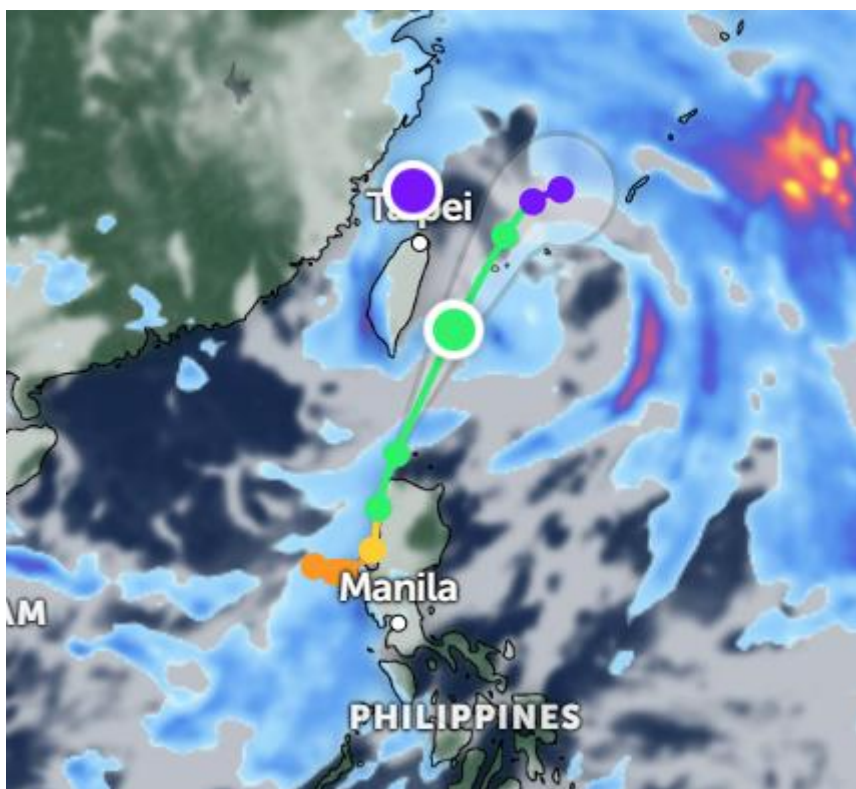




## Tropical Storm (Emong)– Philippines



### Affected Areas

Northern Luzon, Babuyan and Batanes Islands, and southwestern Japan (including Okinawa).

### Duration

July 25-27, 2025

### Hazard Types

Strong winds, Heavy Rainfall: Risk of localized flash flooding and landslides

### Hazard Summary

Typhoon Co-may's low-level circulation is undergoing a lee-side jump near northern Luzon, with reformation expected near Aparri before accelerating over the Luzon Strait. Persistent southeasterly shear and interaction with a larger cyclonic gyre near Taiwan will lead to gradual weakening, though a secondary vortex may develop northeast of Okinawa.