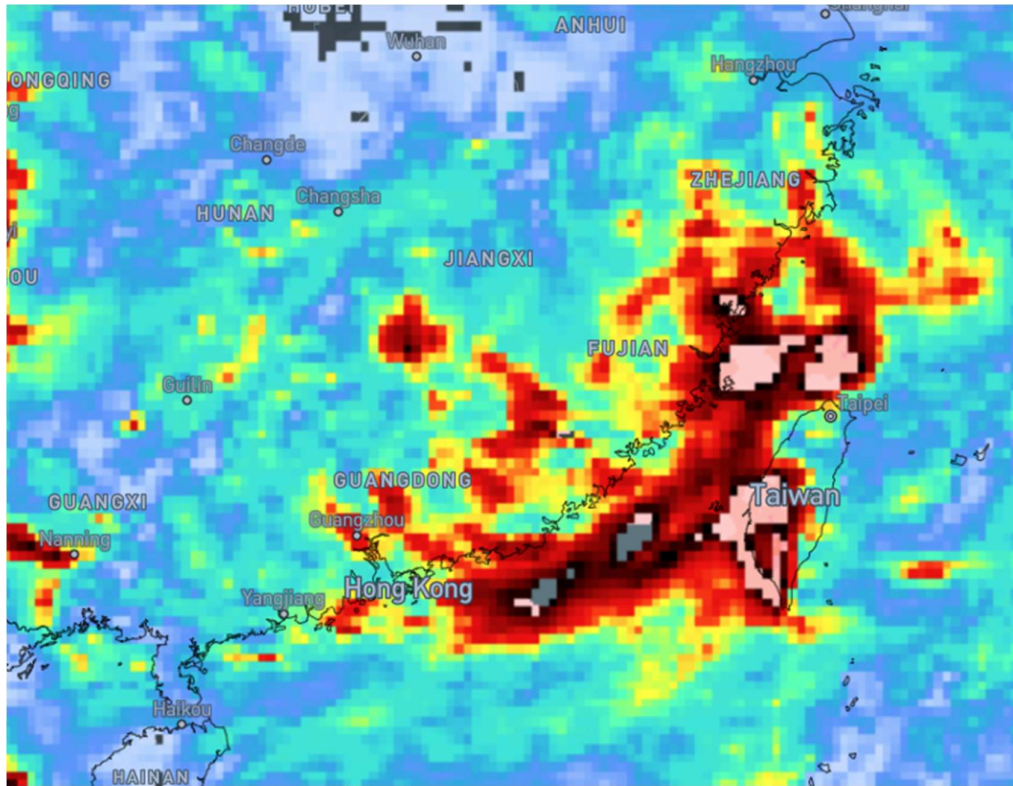




## Heavy Rain – China



### Affected Areas

Pinghe County, Longchuan County, Quanzhou City, Yangchun, Gaozhou City,, Longmen County, Fuzhou City

### Duration

July 08-10, 2025

### Hazard Types

Heavy Rain, Thunderstorm

### Hazard Summary

Moderate to heavy rainfall is anticipated in the area.