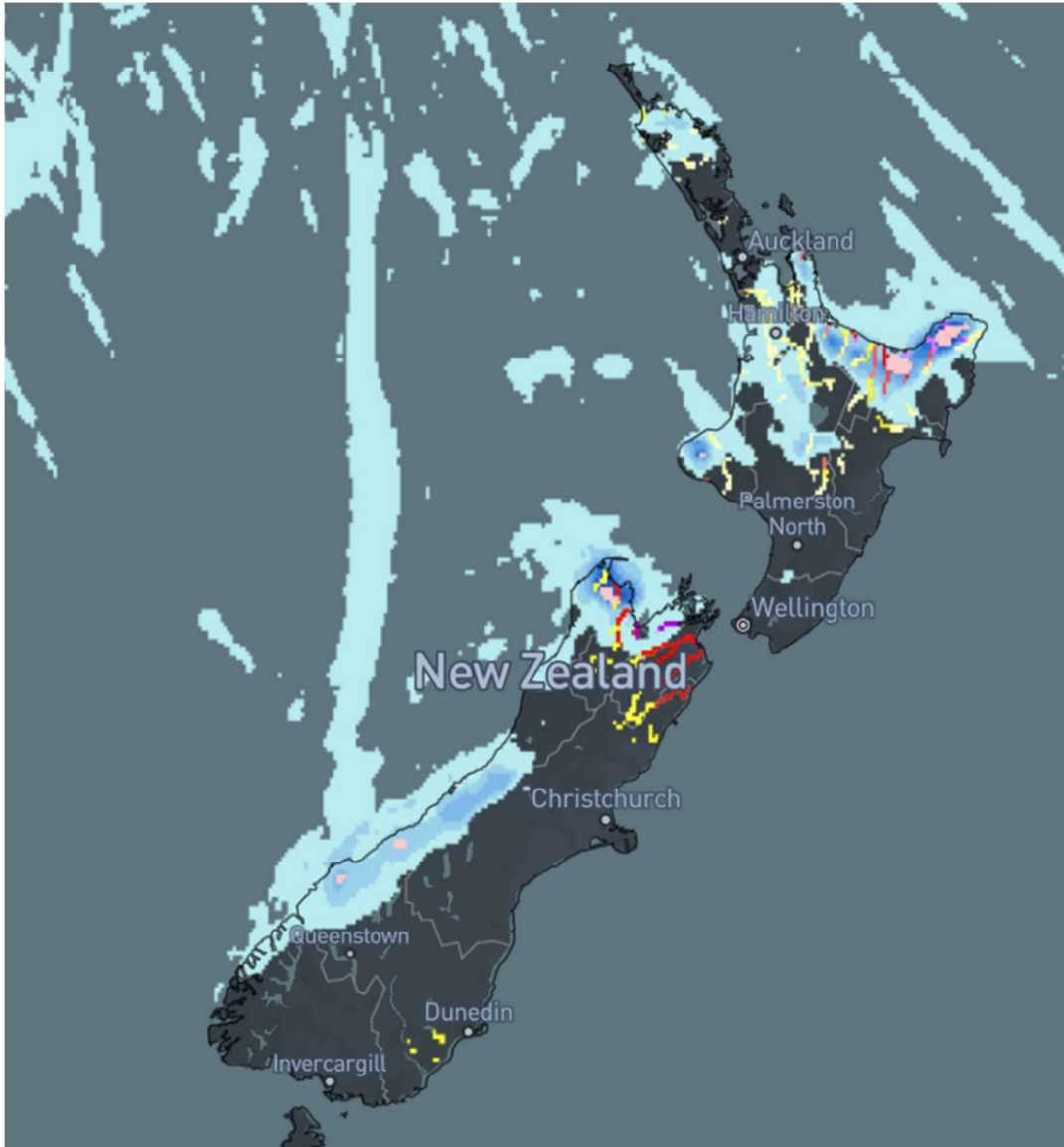




Heavy Rain – New Zealand



Affected Areas

Bay of Plenty, Tasman District, Nelson District, the Richmond and Bryant Ranges including the Rai Valley, and the Marlborough Sounds

Duration

July 1-4, 2025

Hazard Types

Heavy Rain/ Floods

Hazard Summary

Periods of heavy rain leading to warning criteria and localized downpours possible