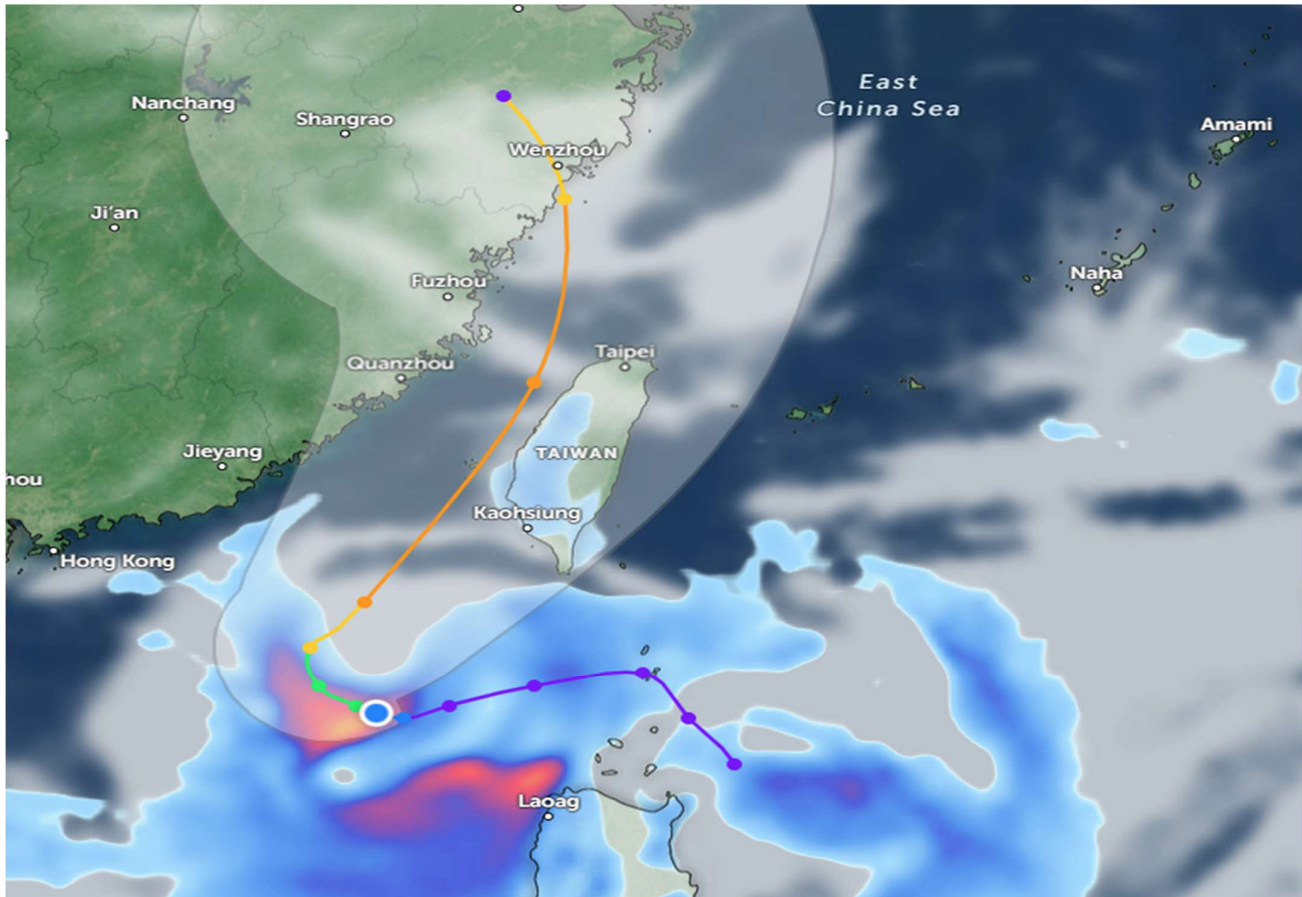




Tropical Depression Bising – South China Sea



Affected Areas

Northern Philippines, Taiwan and Eastern China

Duration

July 4-9, 2025

Hazard Types

Rainfall and storm surges in northern Philippines and Taiwan before making landfall in eastern China.

Hazard Summary

05W (Philippine name Bising) is located 548 km east-southeast of Hong Kong, and has tracked west-southwestward at 11 km/h (6 knots) over the past 6 hours. Maximum significant wave height is 3.7 meters (12 feet). 05W is currently drifting slowly on a general westward track along the south side of a large subtropical ridge centered near Shanghai.

The system will move north-northeastward along the west side of this ridge complex over the next 4 days. Around the time the system makes landfall along the east coast of mainland China (in around 4 days), the primary steering influence shifts once more to the subtropical ridge over Korea and the system will push inland over eastern China over the next 5 days.