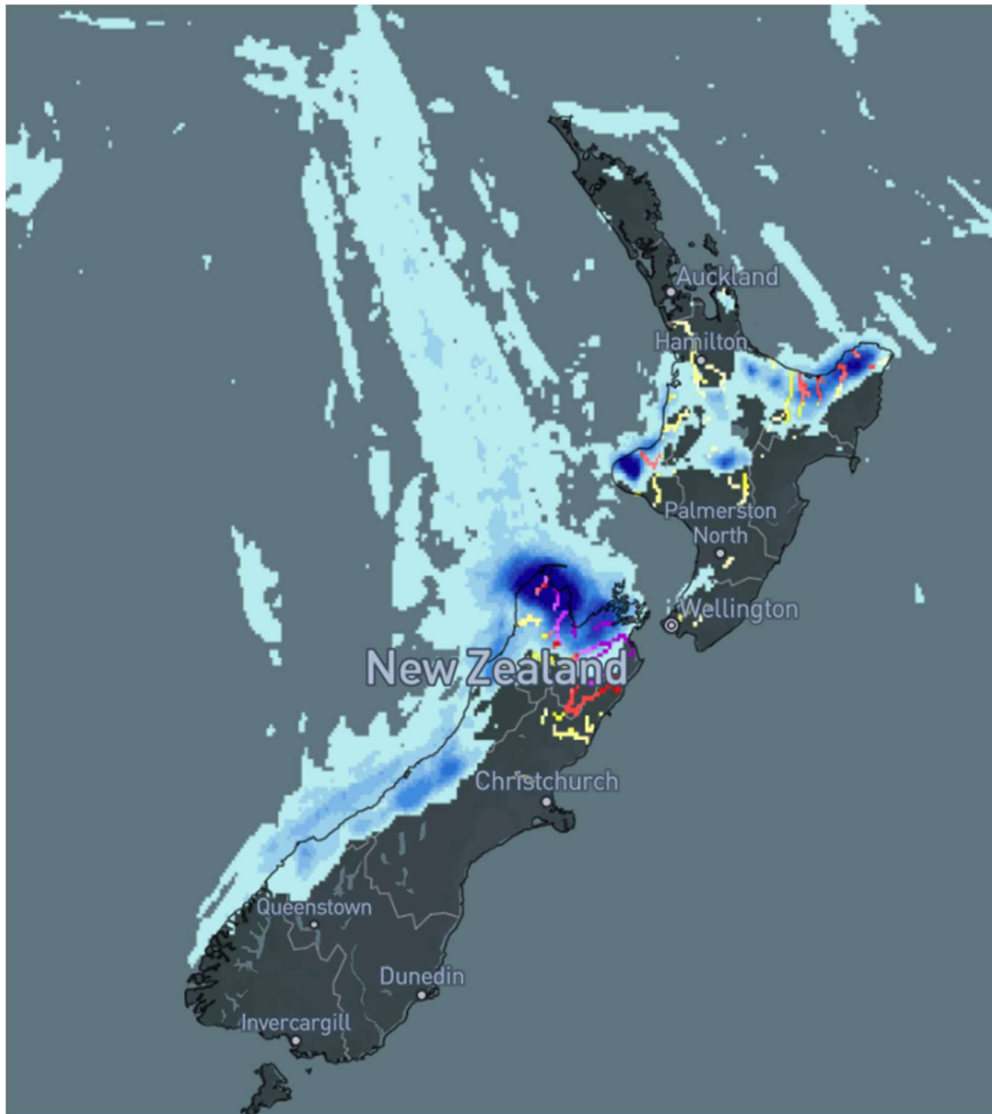




## Heavy Rain/Thunder – New Zealand



### Affected Areas

Bay of Plenty, Northland, Auckland, Great Barrier Island, Coromandel Peninsula, Waikato, Waitomo, Taumarunui, Taranaki, Inland Canterbury south of the Rangitata River, Queenstown Lakes District and Central Otago

### Duration

July 3-4, 2025

### Hazard Types

Heavy rain/ Thunderstorm

### Hazard Summary

A front with heavy rain and possible severe thunderstorms is moving across the upper North Island with heavy rains and thunder in the southern part of the country.