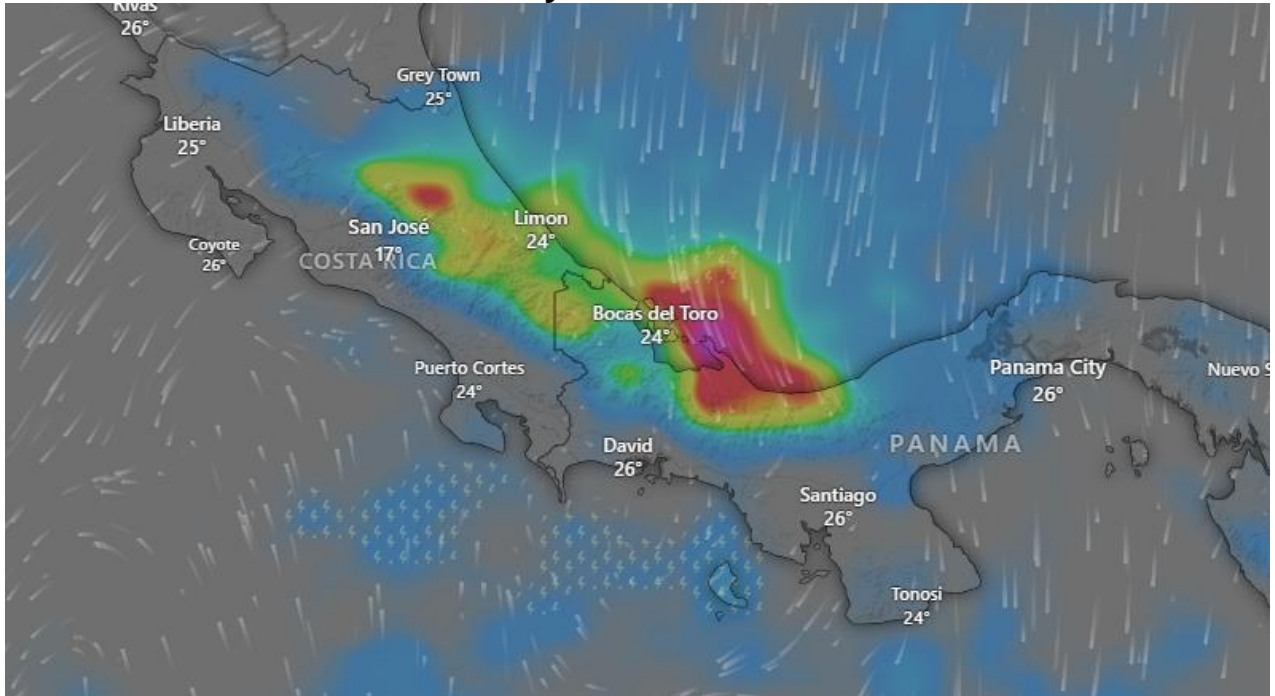


## Severe Weather System Panama & Costa Rica



Valid: From February 02, 2026 to February 09, 2026 (gradual weakening thereafter).

### Affected Areas

Limón, Bocas del Toro border region, Central Valley, Pacific & Caribbean slopes of Costa Rica and Bocas del Toro, Caribbean coast, central provinces, Pacific lowlands of Panama

### Hazard Types

Heavy Rainfall, Thunderstorms, Flash & Urban Flooding, Coastal Flooding.

### Hazard Summary

A persistent tropical moisture plume combined with regional low-level convergence and diurnal convection is affecting Costa Rica and Panama, producing widespread moderate to locally heavy rainfall with embedded thunderstorms, particularly across Caribbean lowlands, central mountainous regions, and Pacific slopes. Global Meteorological models indicates continued atmospheric instability through the forecast period, supporting repeated convective development, enhanced rainfall totals, and localized strong wind gusts. The system poses an elevated risk of flash flooding, river level rises, urban flooding, and isolated landslides, especially in flood-prone and steep terrain areas.