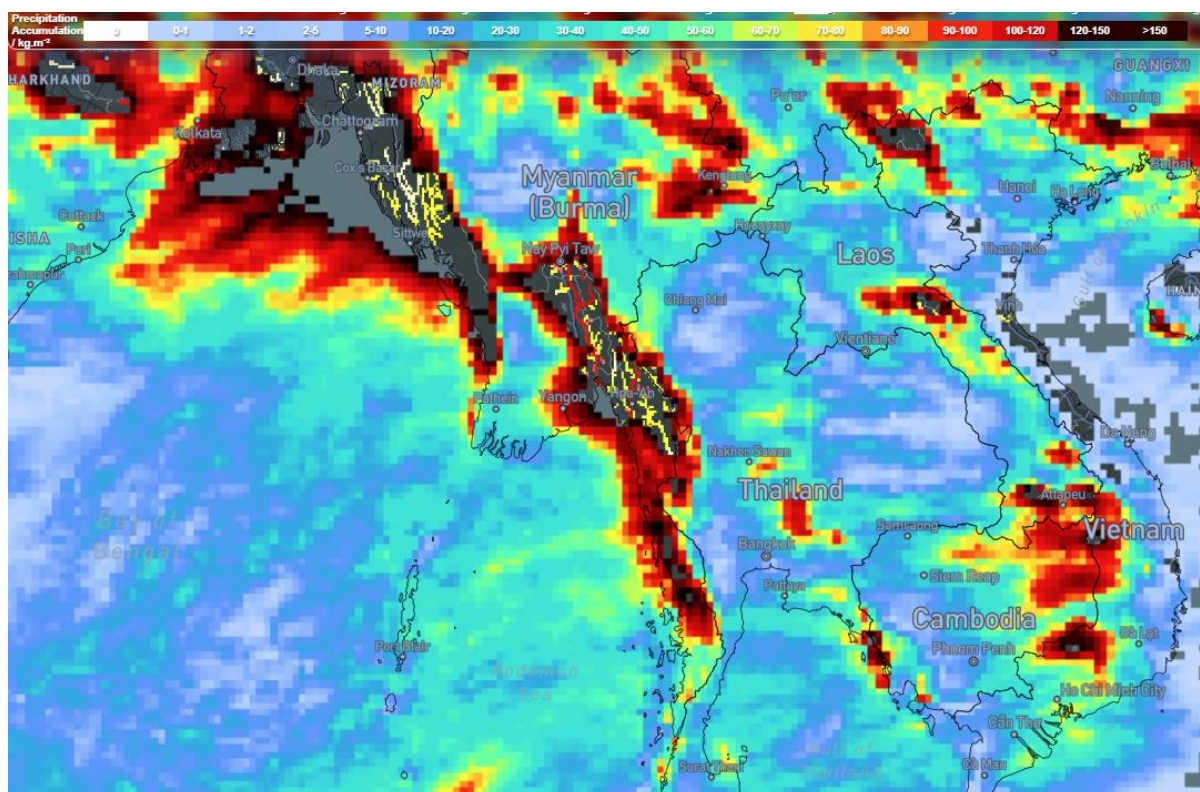




## Heavy Rains & Flood – Myanmar & Thailand



### Affected Areas

Chiang Rai, Ubon Ratchathani, Rayong, Kanchanaburi, Shan State, Ayeyawady Region, Yangon Region, Mandalay Region

### Duration

July 29-30, 2025

### Hazard Types

Heavy Rains, Flooding, Rough Seas

### Hazard Summary

Heavy monsoon rainfall, intensified by a low-pressure system, is causing flash flood risks, landslides, and rough sea conditions in both Thailand and Myanmar. River levels are rising rapidly, especially in foothills and low-lying areas, with waves exceeding 2–3 meters in the Andaman Sea and Gulf.