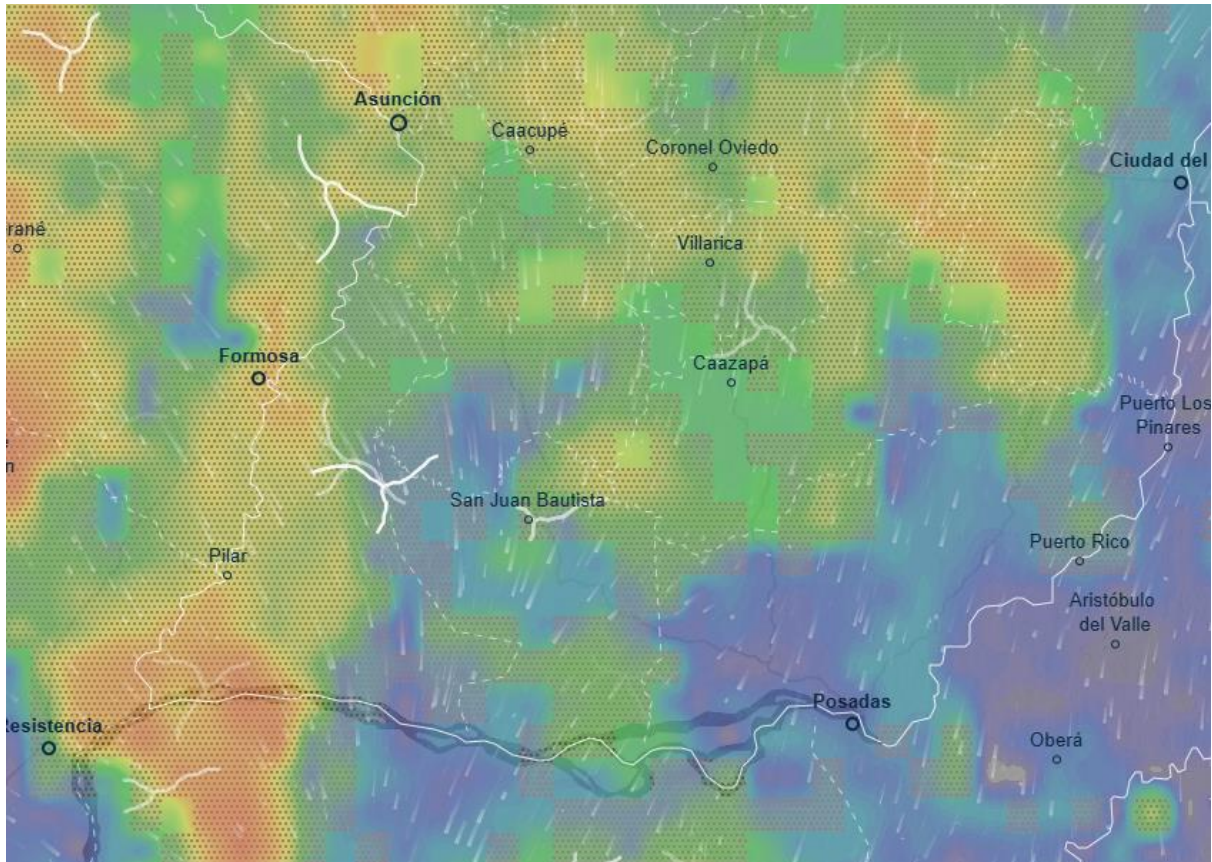


## Puerto Rico Flash Flood



Parts of north-eastern Puerto Rico are under a flash flood warning through at least 2:30 AST on October 31. Candelaria, Levittown, and San Juan are among the impacted areas. On short notice, officials could change the warning for the affected areas and/or expand it to the neighbouring areas. Flooding in low-lying towns close to rivers, streams, and creeks could be caused by prolonged, intense rainfall. Developed locations with readily overloaded stormwater drainage systems may also experience urban flooding.

