



# AVALANCHE ALERT



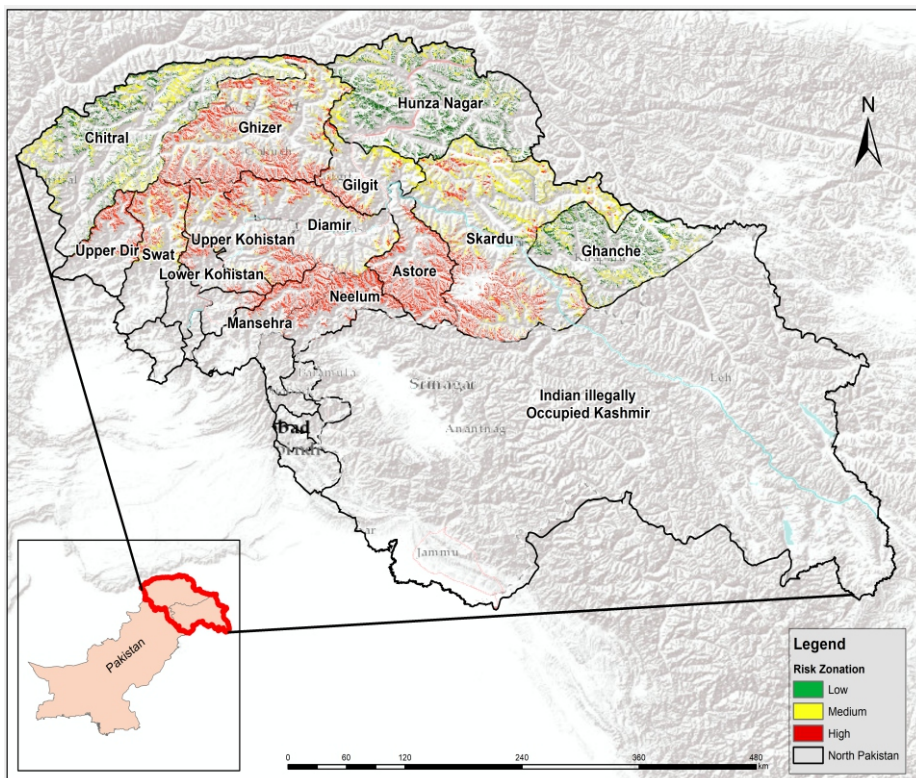
22<sup>th</sup> Feb to 27<sup>th</sup> Feb, 2025

## PROJECTION

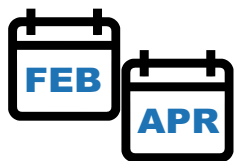
According to NEOC Weekly projections, rain and snow are forecasted in the upper regions of Khyber Pakhtunkhwa, Gilgit-Baltistan, and Azad Jammu & Kashmir in the coming week. Cold weather conditions are expected, with snowfall likely over higher altitudes. However, temperatures are anticipated to remain above normal in Neelum Valley in AJK.

Snow accumulation with above normal, heavy rainfall and temperatures may lead to higher risk of avalanches in high risk areas shown in map.

As heavy to moderate snowfall is expected to persist for several days, along with above normal temperature, there is a high probability of occurrence of snow avalanches in moderate to high-risk zones as highlighted in the map.



## BE PREPARED FOR AVALANCHE



Peak season is February through April



That last Several Days

## LIKELY IMPACTS OF AVALANCHE



Road Closures



Destroy Vegetation



Structural Damage



Human casualties

## LIKELY EXPOSED AREAS

Upper Kohistan

Swat

Upper Dir

AZAD JAMMU & KASHMIR

Neelum

Skardu

Astore

Diamir

Ghizer

Gilgit

## IMMEDIATE ACTION

It is advised to be watchful of weather forecasts and snow conditions regularly.

Evacuate people from high-risk zones before an avalanche occurs.

PDMA's, Rescue Services, Armed Forces and leading NGOs / CSOs to ensure availability of personnel / equipment in the indicated areas and be on stand-by for rapid response in case of any forecasted adverse weather systems.

Stay updated on weather conditions through social media and local news.

