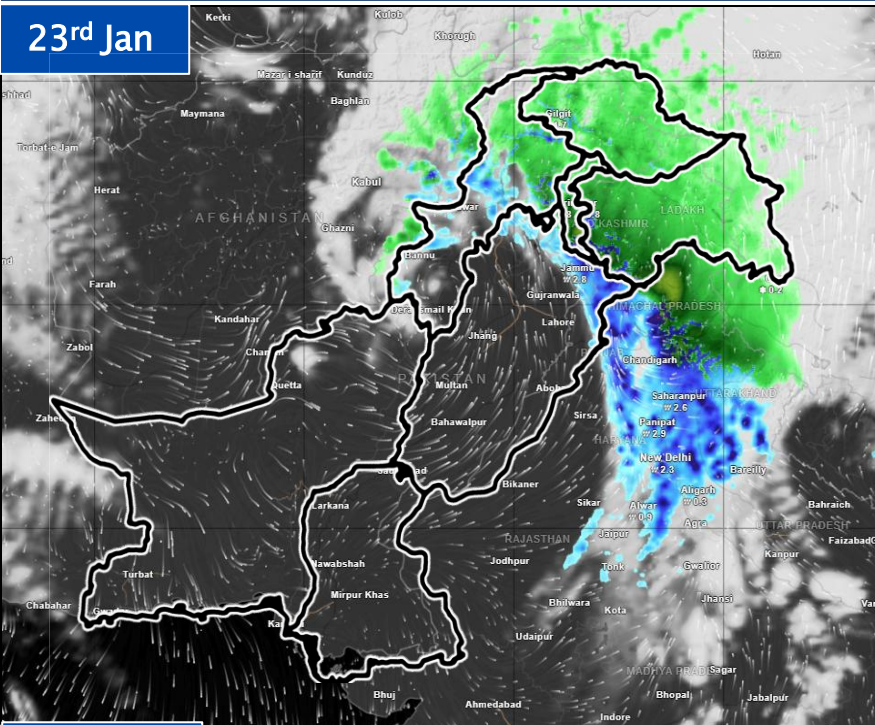




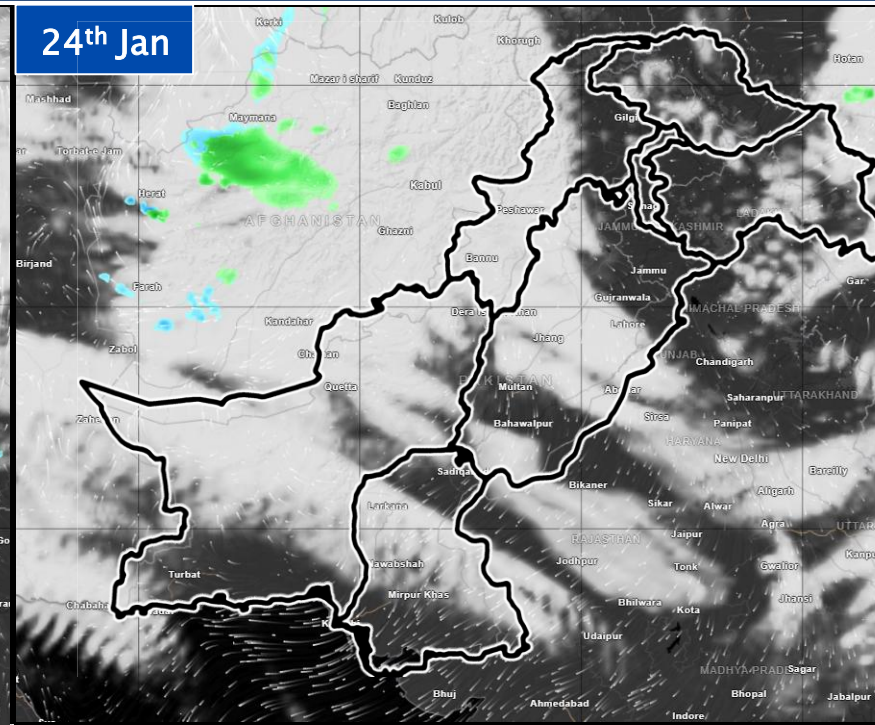
# Weather Advisory (23<sup>rd</sup> to 28<sup>th</sup> Jan, 2026)

National Emergency Operation Centre – National Disaster Management Authority

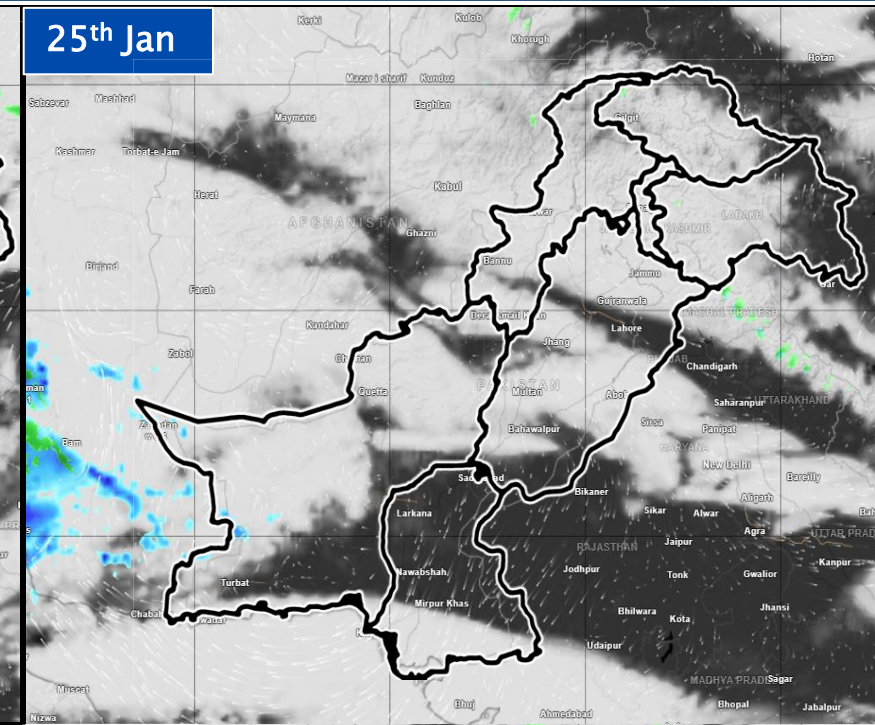
23<sup>rd</sup> Jan



24<sup>th</sup> Jan



25<sup>th</sup> Jan



## Punjab:

Rain/thunderstorms are expected on 23 January. Cold and dry weather; night and morning fog likely over plain areas from 24–28 January.

## Balochistan:

Rain/snow likely over northern and western parts on 27 January, followed by cold and dry conditions with very cold nights through 28 January.

## Sindh:

Mostly cold and dry weather throughout the period; shallow to moderate fog likely over upper Sindh during night and early morning hours.

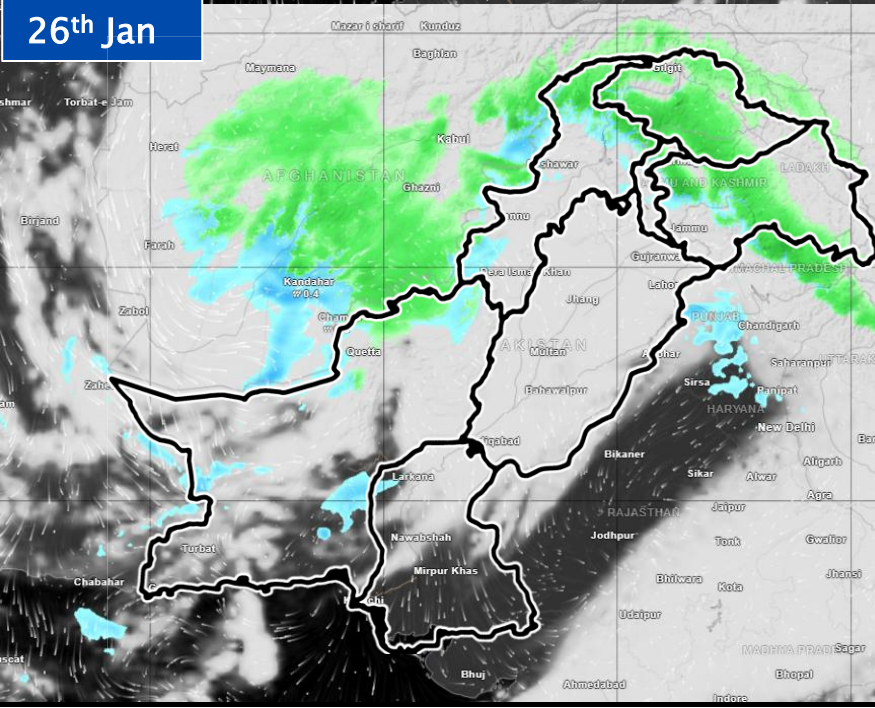
## KP:

Rain/snow with heavy snowfall in northern districts on 23 January; cold and dry weather expected from 24–26 January.

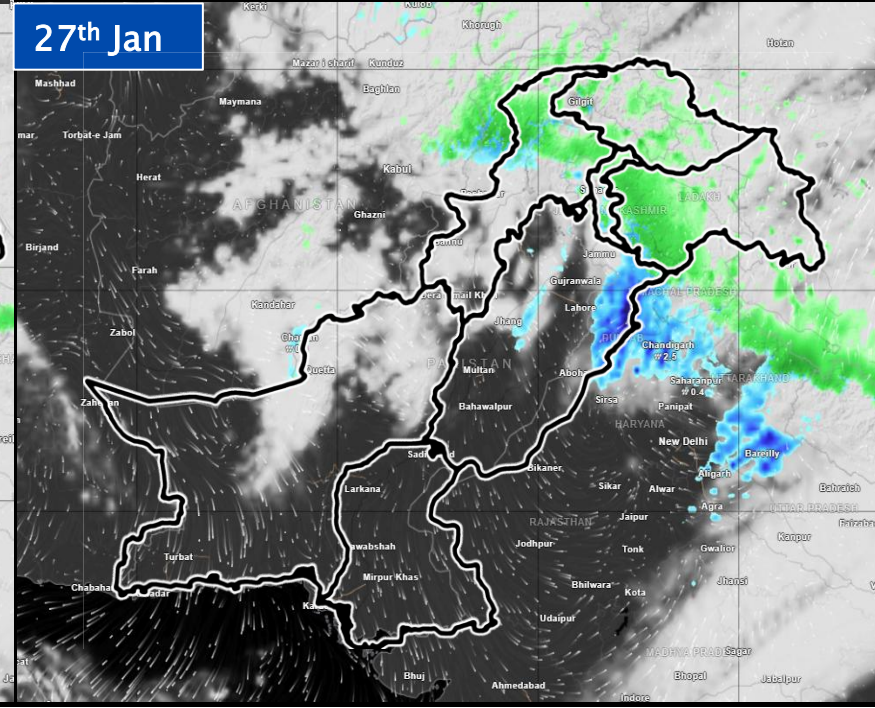
## GB & AJK:

Widespread snowfall is expected on 23 January, followed by isolated rain showers. Very cold and mostly dry weather is expected on 24 and 25 January, followed by another spell of isolated snow showers from 26 to 28 January.

26<sup>th</sup> Jan



27<sup>th</sup> Jan



28<sup>th</sup> Jan

