



AVALANCHE ALERT



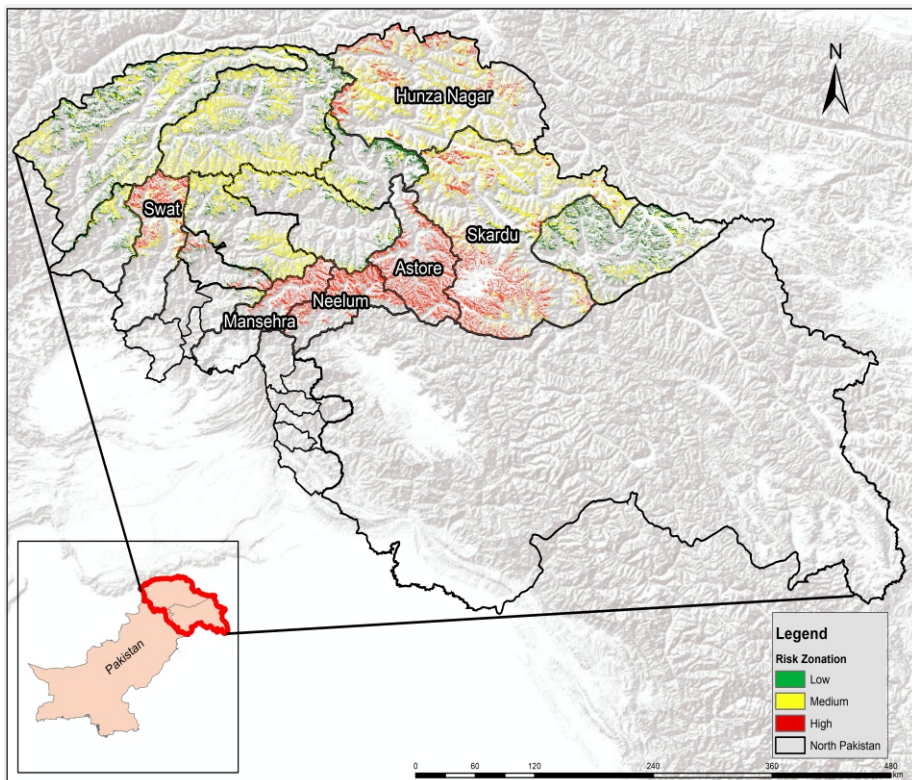
26th Mar to 31st Mar, 2025

PROJECTION

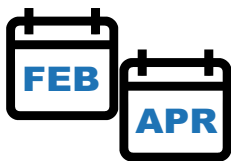
According to NEOC Weekly projections, heavy rain is forecasted in the upper regions of Khyber Pakhtunkhwa, Gilgit-Baltistan, and Azad Jammu & Kashmir in the coming week. Cold weather conditions are expected, with snowfall likely over higher altitudes. However, temperatures are anticipated to remain above normal in areas mentioned in map.

Snow accumulation with above normal, heavy rainfall and temperatures may lead to higher risk of avalanches in high risk areas shown in map.

As heavy to moderate rainfall is expected to persist for several days, along with above normal temperature, there is a high probability of occurrence of snow avalanches in moderate to high-risk zones as highlighted in the map.



BE PREPARED FOR AVALANCHE



Peak season is February through April



That last Several Days

LIKELY IMPACTS OF AVALANCHE



Road Closures



Destroy Vegetation



Structural Damage



Human casualties

LIKELY EXPOSED AREAS

Swat

Mansehra

AZAD JAMMU & KASHMIR

Neelum

Skardu

Astore

Hunza

Nagar

GILGIT-BALTISTAN
KHYBER PAKHTUNKHWA