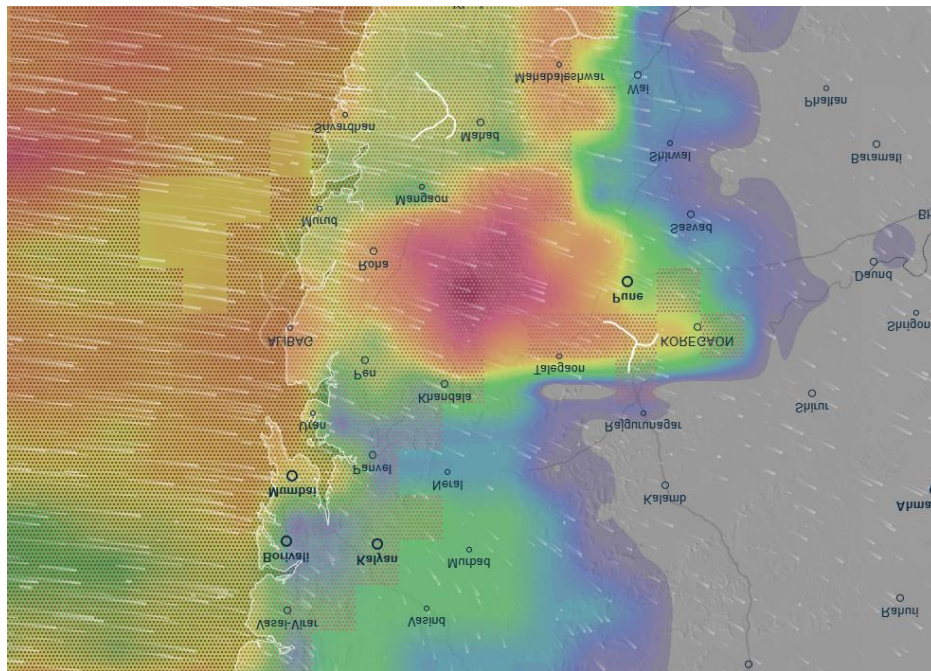




Heavy Rainfall India



Affected Areas

Mumbai, Pune, Kore Gadin, Roha, Koyha, Makhjan India

Hazard Types

Heavy Rainfall/Flooding

Hazard Summary

Intense rainfall is currently engulfing the Pune region of India, with heavy precipitation engulfing areas from Khandala to Talegaon and Koregaon. Accumulated totals are creeping between 60 to 90 mm, with some localized spots possibly drowning under more than 95 mm. The deepening red and purple zones reveal dangerously high rainfall intensity, pushing certain low-lying areas toward flash flooding and waterlogging. It is crucial to heed weather warnings and prepare for potential disruptions caused by this relentless downpour.