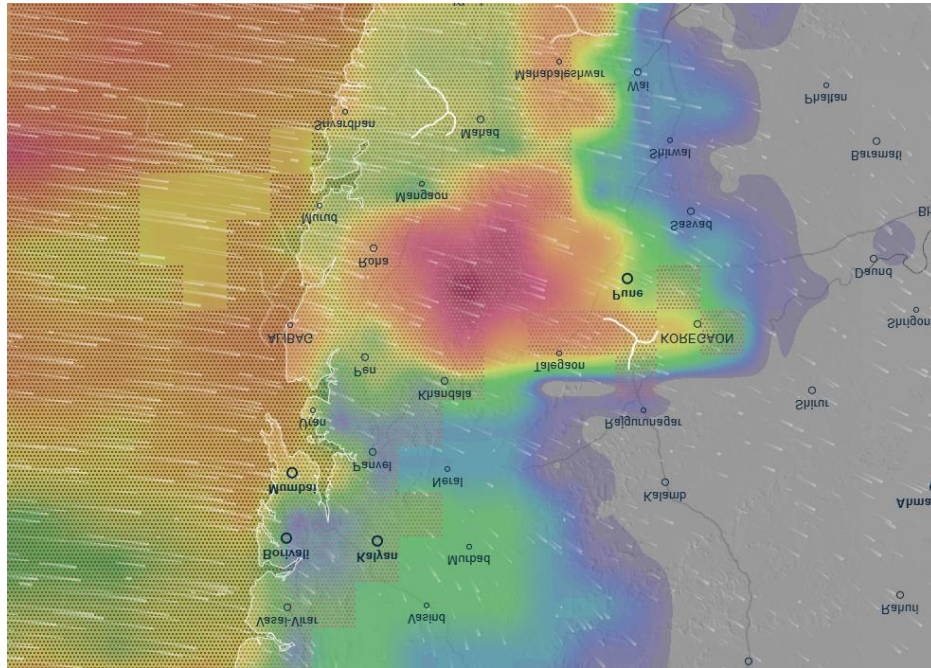




Heavy Rainfall Saudi Arabia



Affected Areas

Dariq, An Nimas, Taiz, Al Bayda Saudia Arabia

Hazard Types

Heavy Rainfall/Flooding

Hazard Summary

The southern region of Saudi Arabia is currently experiencing intense and sustained rainfall, with heavy precipitation affecting key areas including Taiz, Ad Dali, and Al Bayda. Accumulated rainfall totals are ranging between 50 to 90 mm, posing a heightened risk of flooding and infrastructure disruption. Authorities urge residents and travelers to remain vigilant, adhere to official weather advisories, and take necessary precautions to ensure safet