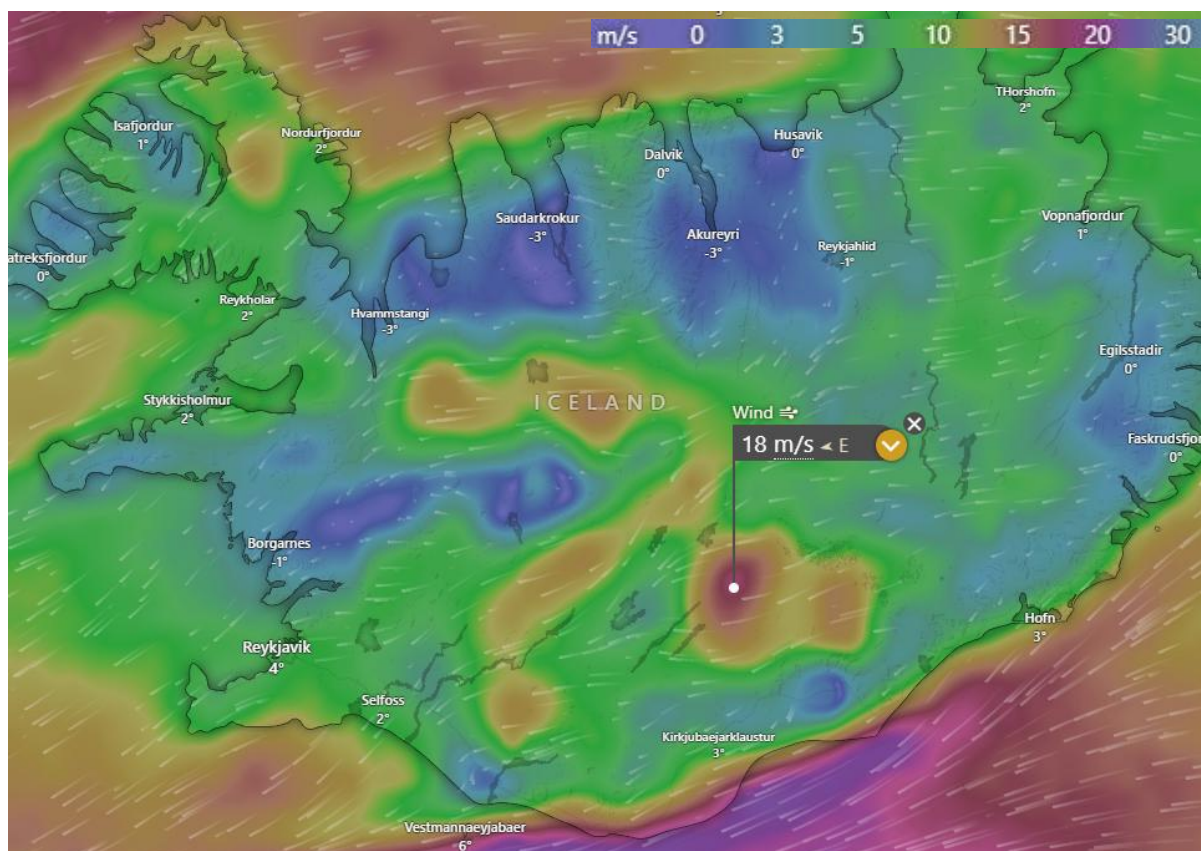




Jan 28, 2026

Strong Winds in Iceland



Affected Areas

Reykjavík, Kirkjubæjarklaustur, Vík í Mýrdal, Skógar, Fagurhólmseyri.

Duration

January 28 – 30, 2026

Hazard Types

Strong winds, Wind gusts

Hazard Summary

A wind alert is in effect across Iceland as strong to gale-force winds impact large parts of the country. Sustained winds of around 18 m/s, with higher gusts, are affecting central and southern regions, while exposed coastal and mountainous areas may experience even stronger conditions. These winds can lead to difficult travel, especially for high-profile vehicles, and may cause localized blowing snow or reduced visibility.