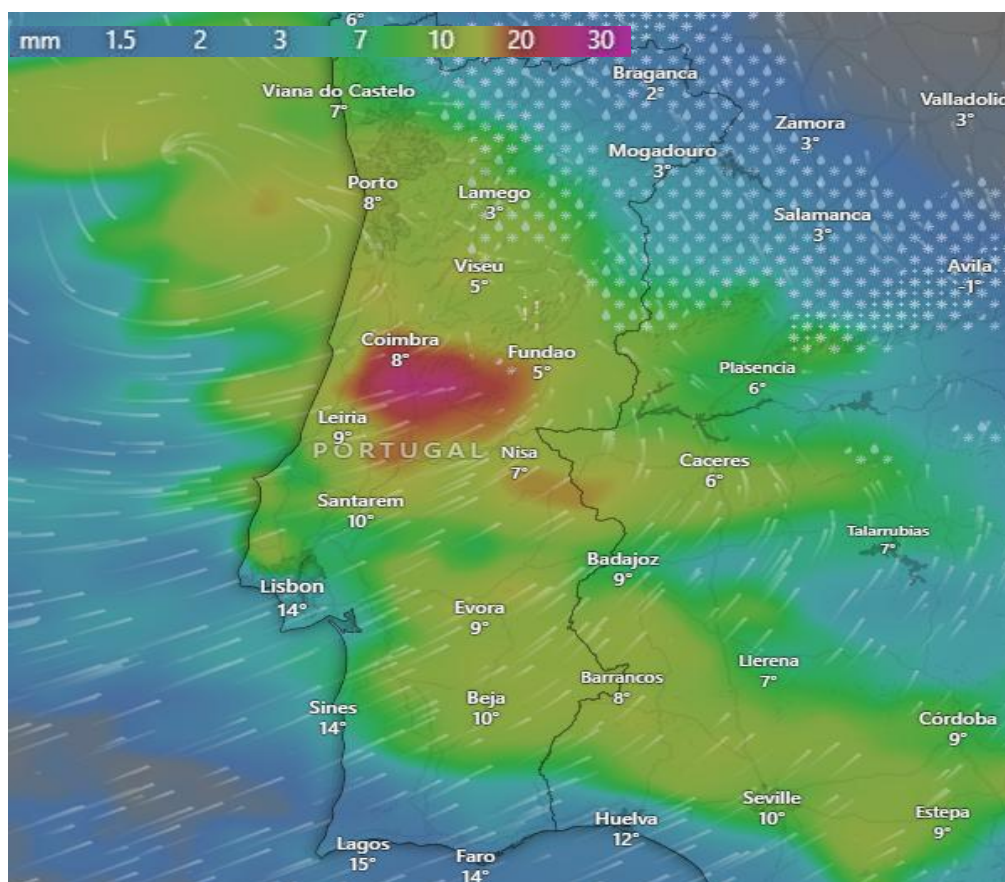




Jan 26, 2026

## Coastal Flooding in Portugal



### Affected Areas

Viana do Castelo, Porto, Coimbra, Leiria, Lisbon, Sines, Lagos, Faro

### Duration

January 26-30, 2026

### Hazard Types

Heavy Rain, Coastal Flooding, Storm surges

### Hazard Summary

Strong winds coming from the Atlantic Ocean and moving towards the North-East Portugal are expected to give rise to high coastal tides, and will further bring high rainfall across the country. The combined effect of coastal waves, storm surges and rainfall are likely to bring floods in the coastal areas of Portugal. Urban coastal cities and transport infrastructure are at risk of temporary inundation and disruption.