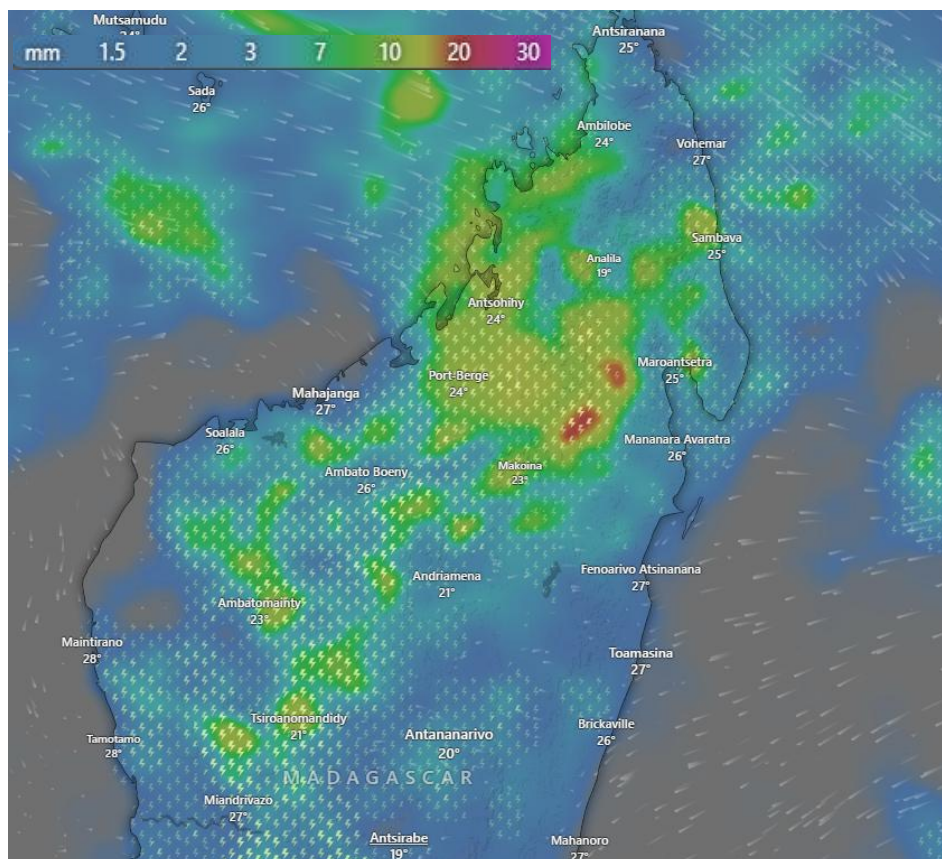




Jan 26, 2026

Rainfalls in Madagascar



Affected Areas

Antsiranana, Ambilobe, Sambava, Antsohihy, Mahajanga, Port-Bergé, Antananarivo, Moramanga, Toamasina, Brickaville, Andilamena.

Duration

January 26 – 31, 2026

Hazard Types

Heavy Rainfall, Thunderstorms, Flooding

Hazard Summary

Widespread rainfall is affecting large parts of Madagascar, with moderate to locally heavy showers across northern, central, and eastern regions. These conditions increase the risk of localized flooding, waterlogging, and reduced visibility, particularly in low-lying and coastal areas. The rainfall is driven by the Intertropical Convergence Zone (ITCZ) and moist onshore easterly winds, causing strong moisture convergence over Madagascar.